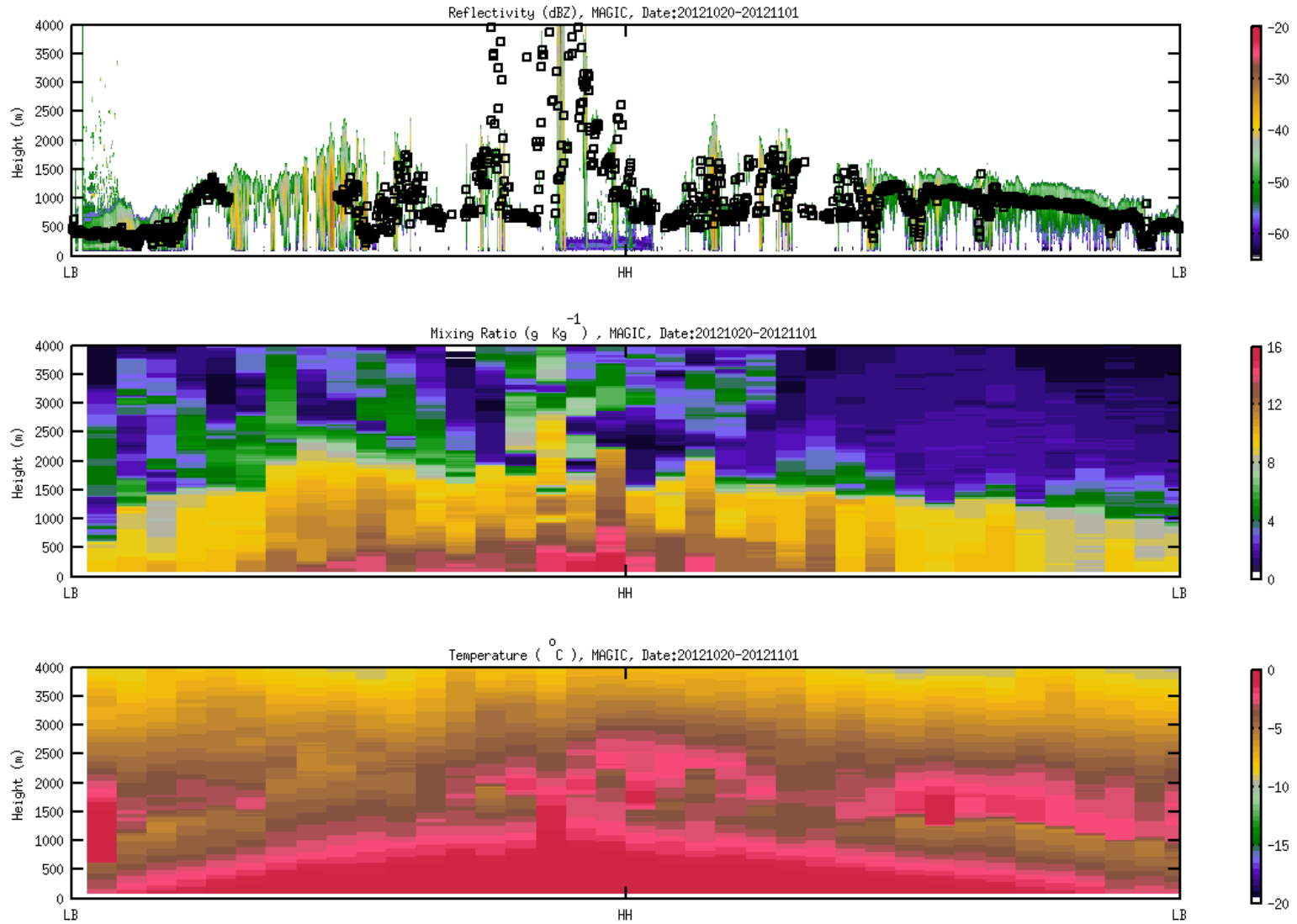


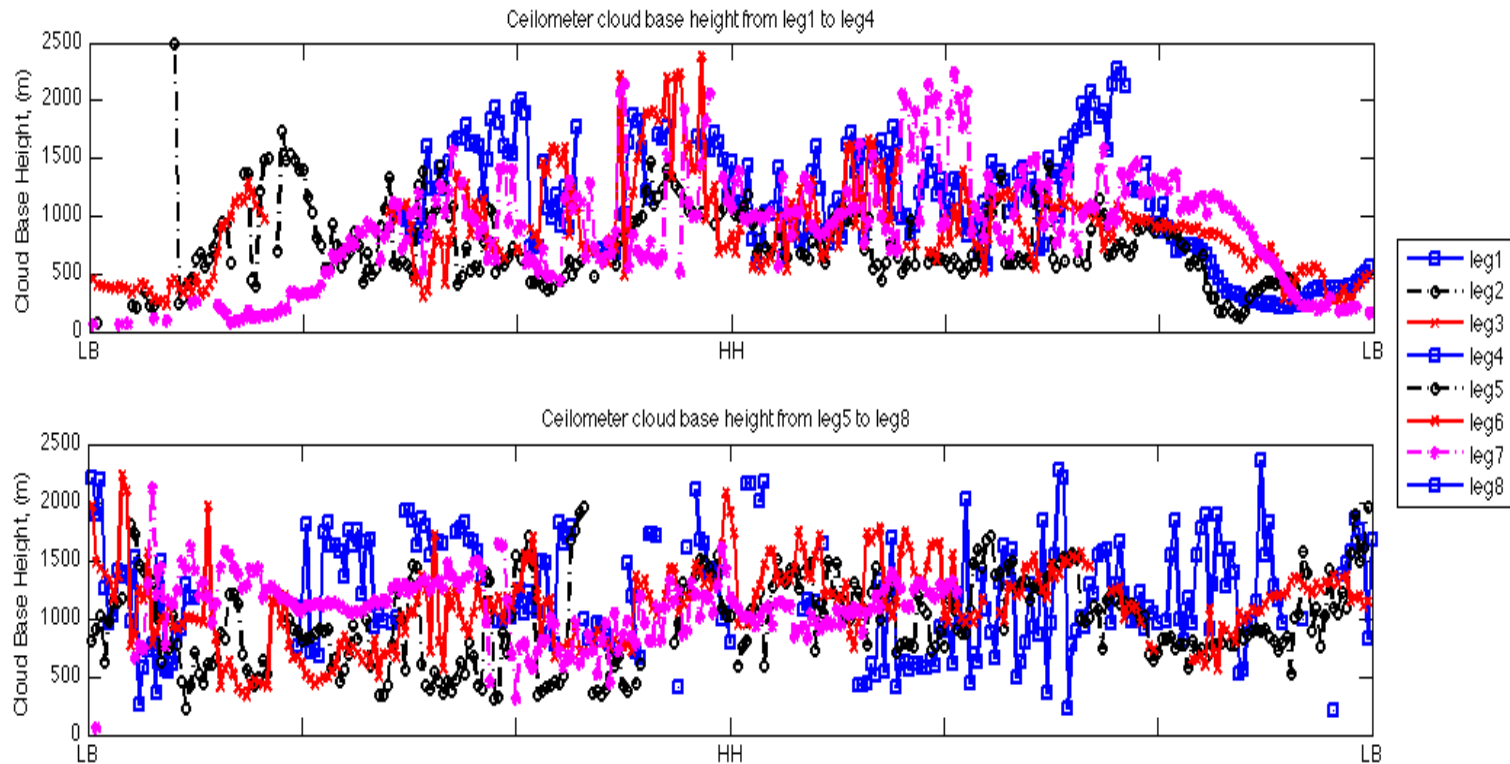
Leg 4: October 20-November 1, 2012



Los Angeles

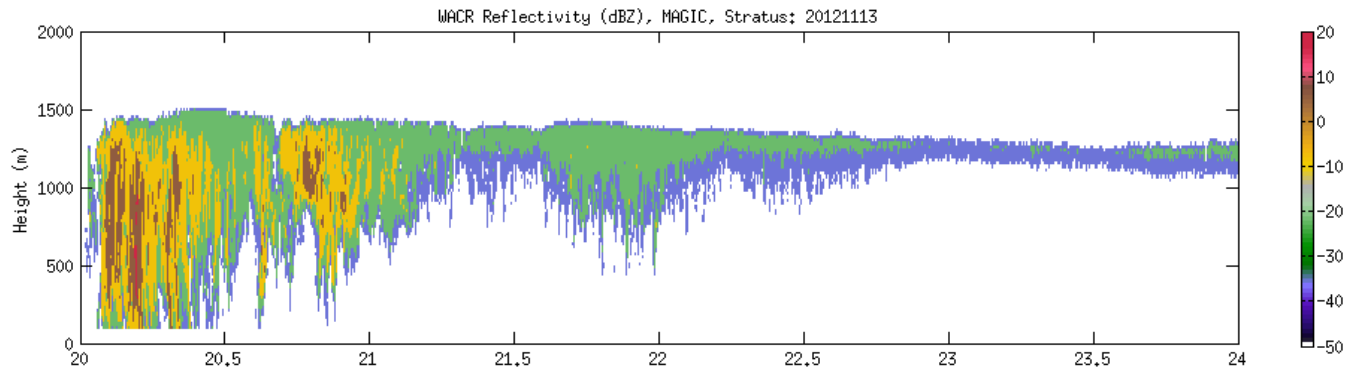
Honolulu

Los Angeles

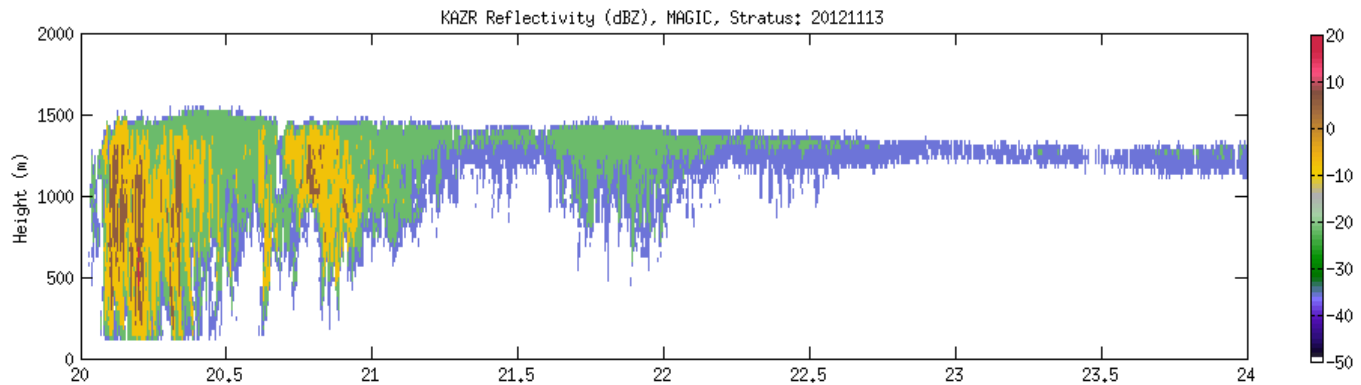


Leg01,	September 8-20, 2012
Leg02,	September 22-October 4, 2012
Leg03,	October 6-18, 2012
Leg04,	October 20-November 1, 2012
Leg05,	November 3-15, 2012
Leg06,	November 17-29, 2012
Leg07,	December 1-13, 2012
Leg08,	December 15-27, 2012

WACR

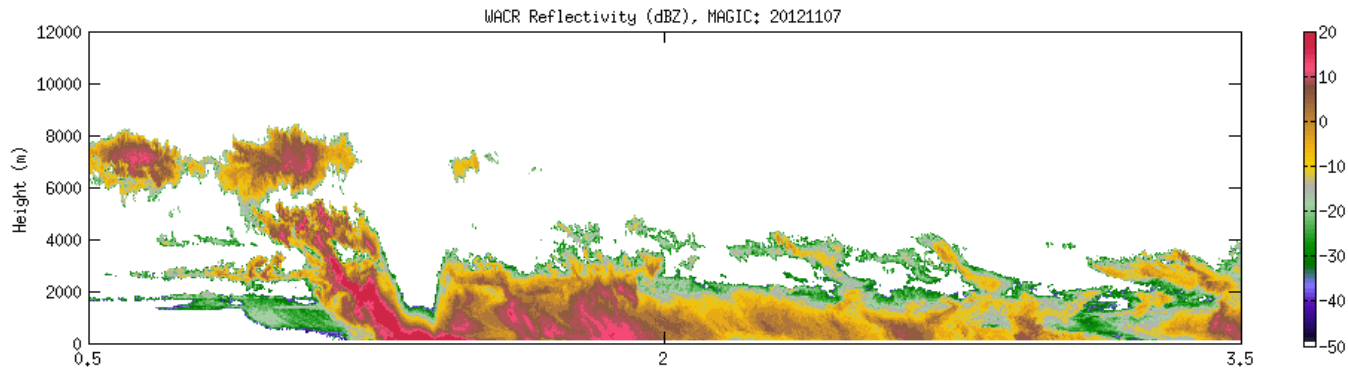


KAZR

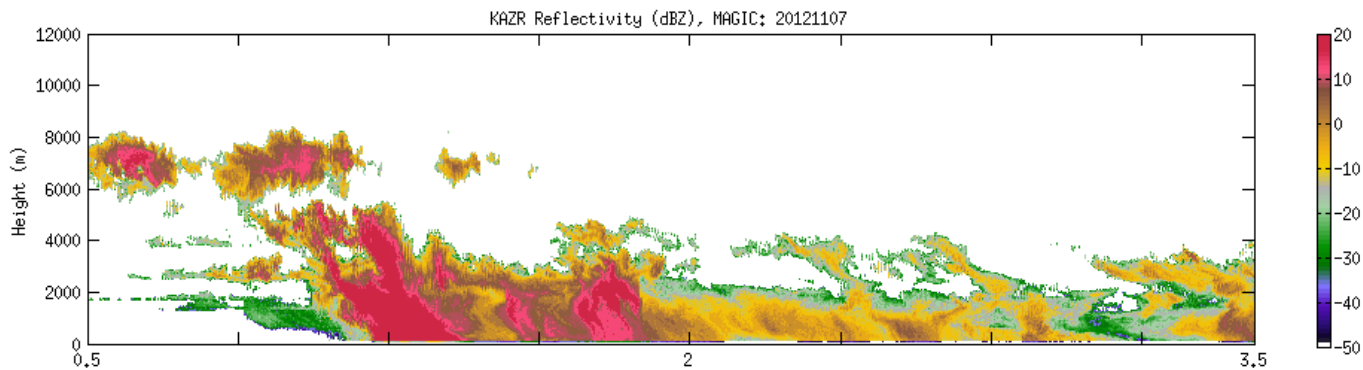


MWACR is more sensitive...this will change soon

WACR



KAZR



Handle most precipitation so far quite well.