



# LASSO BROWSER

Bhargavi Krishna & Kyle Dumas

**Introduction**

Welcome to the LASSO Bundle Browser that is designed to assist users with identifying LASSO large-eddy simulations (LES) of interest for their research. The plots and associated data table update dynamically based on user search criteria, and links within the table enable direct access to order the data bundles of the displayed simulations. More information on LASSO and the data bundles can be found at the [LASSO home page](#) and on the [Alpha 1 Release web page](#). Note that this is an initial evaluation version of the browser that specifically queries and displays observed and simulated cloud properties for the five days worth of simulations released in the LASSO Alpha 1 release. There are 192 simulations between the five days that differ in terms of the LES model, forcing dataset, domain size, and model physics.

Select All

- ▶ DATE
- ▶ MEASUREMENTS
- ▶ MODEL TYPE
- ▶ OUTPUT DOMAIN SIZE
- ▶ NUMBER OF LEVELS
- ▶ LARGE SCALE FORCING
- ▶ LARGE SCALE FORCING SCALE
- ▶ INITIAL CONDITION
- ▶ SURFACE TREATMENT
- ▶ MICROPHYSICS

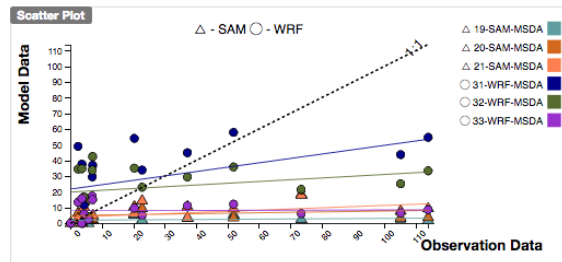
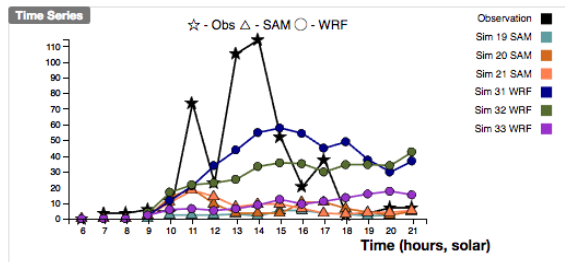
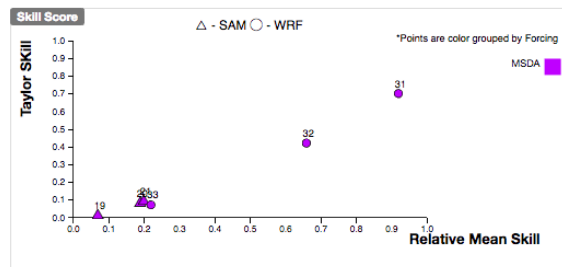
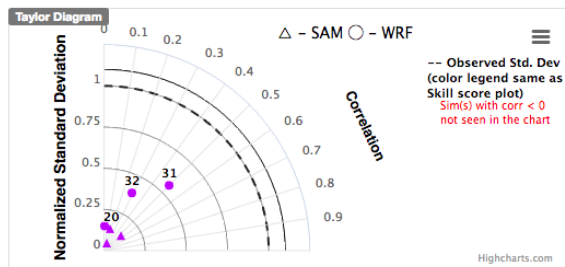
Submit

Overview Plots

- Heat Maps
- Metrics

Date: June 27, 2015

Measurement: Liquid Water Path (LWP) (g/m<sup>2</sup>)



**Skill Scores on June 27, 2015**

Measurement Skill: 0 to 1 slider

1D Cloud Skill: 0 to 1 slider

2D Cloud Mask Skill: 0 to 1 slider

Total Cloud Skill: 0 to 1 slider

Slide orange sliders to adjust min and max skill ranges

Copy CSV Print PDF

Search:

Simulation ID	Measurement Skill (Liquid Water Path (LWP))	1D Cloud Skill	2D Cloud Mask Skill	Total Cloud Skill
19 (Diagnostics) (Data)	0.02	0.01	0.08	0.03
20 (Diagnostics) (Data)	0.12	0.19	0.23	0.21
21 (Diagnostics) (Data)	0.14	0.26	0.28	0.27
31 (Diagnostics) (Data)	0.8	0.68	0.29	0.44
32 (Diagnostics) (Data)	0.53	0.53	0.28	0.39
33 (Diagnostics) (Data)	0.12	0.19	0.19	0.19

Showing 1 to 6 of 6 entries Previous  Next

# Existing: Alpha 1 features

- Retrieve data on the fly from Cassandra (database) to draw 4 different plots and skill score table
- Data indexed by model type, LS forcing, initial conditions, etc found on the left panel on the page for easy lookup
- Changing slider skill values to update data table
- Links to quicklook plots for all simulations and dates
- Link to each simulation data for download

**Introduction**

Welcome to the LASSO Bundle Browser that is designed to assist users with identifying LASSO large-eddy simulations (LES) of interest for their research. The plots and associated data table update dynamically based on user search criteria, and links within the table enable direct access to order the data bundles of the displayed simulations. More information on LASSO and the data bundles can be found at the [LASSO home page](#) and on the [Alpha 1 Release web page](#). Note that this is an initial evaluation version of the browser that specifically queries and displays observed and simulated cloud properties for the five days worth of simulations released in the LASSO Alpha 1 release. There are 192 simulations between the five days that differ in terms of the LES model, forcing dataset, domain size, and model physics.

Select All

- DATE
- MEASUREMENTS
- MODEL TYPE
- OUTPUT DOMAIN SIZE
- NUMBER OF LEVELS
- LARGE SCALE FORCING
- LARGE SCALE FORCING SCALE
- INITIAL CONDITION
- SURFACE TREATMENT
- MICROPHYSICS

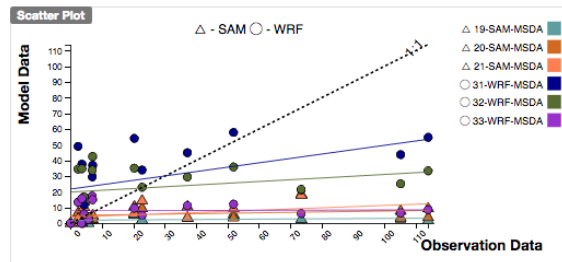
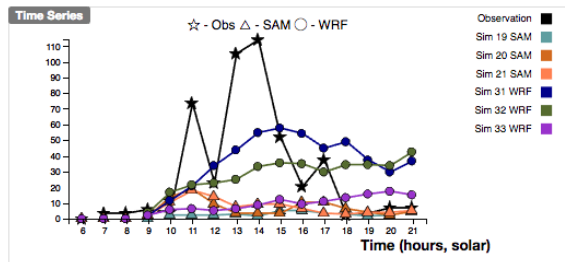
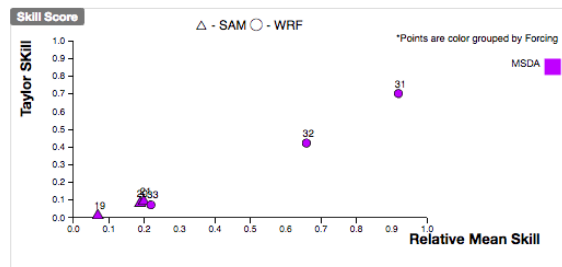
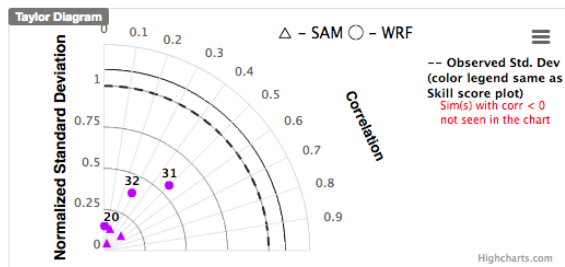
Submit

Overview Plots

- Heat Maps
- Metrics

Date: June 27, 2015

Measurement: Liquid Water Path (LWP) (g/m<sup>2</sup>)



**Skill Scores on June 27, 2015**

Measurement Skill: 0 to 1 slider

1D Cloud Skill: 0 to 1 slider

2D Cloud Mask Skill: 0 to 1 slider

Total Cloud Skill: 0 to 1 slider

Slide orange sliders to adjust min and max skill ranges

Copy CSV Print PDF

Search:

Simulation ID	Measurement Skill (Liquid Water Path (LWP))	1D Cloud Skill	2D Cloud Mask Skill	Total Cloud Skill
19 (Diagnostics) (Data)	0.02	0.01	0.08	0.03
20 (Diagnostics) (Data)	0.12	0.19	0.23	0.21
21 (Diagnostics) (Data)	0.14	0.26	0.28	0.27
31 (Diagnostics) (Data)	0.8	0.68	0.29	0.44
32 (Diagnostics) (Data)	0.53	0.53	0.28	0.39
33 (Diagnostics) (Data)	0.12	0.19	0.19	0.19

Showing 1 to 6 of 6 entries

Previous 1 Next

# Existing: Alpha 1 features

- Data indexed by model type, LS forcing, initial conditions, etc found on the left panel on the page for easy lookup
- Retrieve data on the fly from Cassandra (database) to draw 4 different plots and skill score table
- Changing slider skill values to update data table
- Links to quicklook plots for all simulations and dates
- Link to each simulation data for download

**Introduction**

Welcome to the LASSO Bundle Browser that is designed to assist users with identifying LASSO large-eddy simulations (LES) of interest for their research. The plots and associated data table update dynamically based on user search criteria, and links within the table enable direct access to order the data bundles of the displayed simulations. More information on LASSO and the data bundles can be found at the [LASSO home page](#) and on the [Alpha 1 Release web page](#). Note that this is an initial evaluation version of the browser that specifically queries and displays observed and simulated cloud properties for the five days worth of simulations released in the LASSO Alpha 1 release. There are 192 simulations between the five days that differ in terms of the LES model, forcing dataset, domain size, and model physics.

Select All

- ▶ DATE
- ▶ MEASUREMENTS
- ▶ MODEL TYPE
- ▶ OUTPUT DOMAIN SIZE
- ▶ NUMBER OF LEVELS
- ▶ LARGE SCALE FORCING
- ▶ LARGE SCALE FORCING SCALE
- ▶ INITIAL CONDITION
- ▶ SURFACE TREATMENT
- ▶ MICROPHYSICS

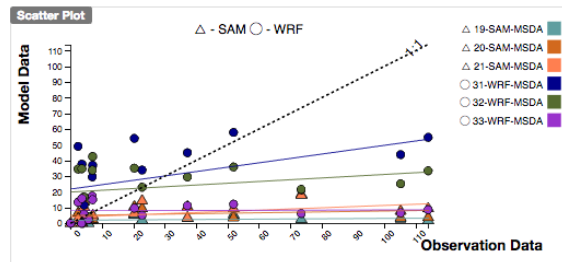
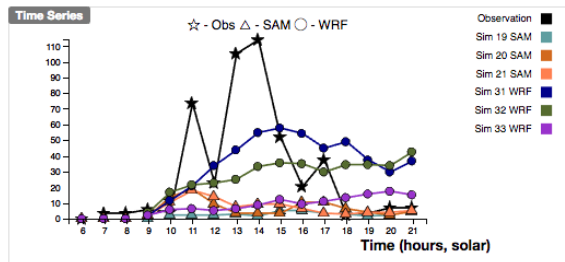
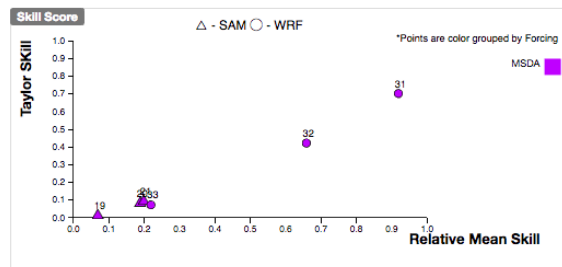
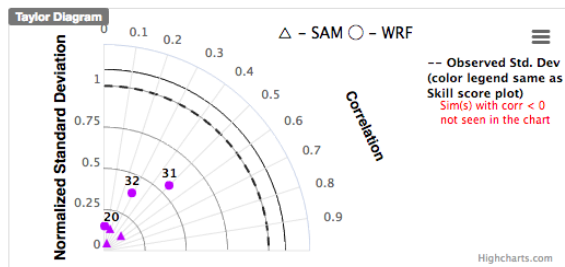
Submit

**Overview Plots**

- Heat Maps
- Metrics

Date: June 27, 2015

Measurement: Liquid Water Path (LWP) (g/m<sup>2</sup>)



**Skill Scores on June 27, 2015**

Measurement Skill

1D Cloud Skill

2D Cloud Mask Skill

Total Cloud Skill

Slide orange sliders to adjust min and max skill ranges

Copy CSV Print PDF

Search:

Simulation ID	Measurement Skill (Liquid Water Path (LWP))	1D Cloud Skill	2D Cloud Mask Skill	Total Cloud Skill
19 (Diagnostics) (Data)	0.02	0.01	0.08	0.03
20 (Diagnostics) (Data)	0.12	0.19	0.23	0.21
21 (Diagnostics) (Data)	0.14	0.26	0.28	0.27
31 (Diagnostics) (Data)	0.8	0.68	0.29	0.44
32 (Diagnostics) (Data)	0.53	0.53	0.28	0.39
33 (Diagnostics) (Data)	0.12	0.19	0.19	0.19

Showing 1 to 6 of 6 entries

Previous  Next

# Existing: Alpha 1 features

- Data indexed by model type, LS forcing, initial conditions, etc found on the left panel on the page for easy lookup
- Retrieve data on the fly from Cassandra (database) to draw 4 different plots and skill score table
- Changing slider skill values to update data table
- Links to quicklook plots for all simulations and dates
- Link to each simulation data for download

**Introduction**

Welcome to the LASSO Bundle Browser that is designed to assist users with identifying LASSO large-eddy simulations (LES) of interest for their research. The plots and associated data table update dynamically based on user search criteria, and links within the table enable direct access to order the data bundles of the displayed simulations. More information on LASSO and the data bundles can be found at the [LASSO home page](#) and on the [Alpha 1 Release web page](#). Note that this is an initial evaluation version of the browser that specifically queries and displays observed and simulated cloud properties for the five days worth of simulations released in the LASSO Alpha 1 release. There are 192 simulations between the five days that differ in terms of the LES model, forcing dataset, domain size, and model physics.

Select All

- ▶ DATE
- ▶ MEASUREMENTS
- ▶ MODEL TYPE
- ▶ OUTPUT DOMAIN SIZE
- ▶ NUMBER OF LEVELS
- ▶ LARGE SCALE FORCING
- ▶ LARGE SCALE FORCING SCALE
- ▶ INITIAL CONDITION
- ▶ SURFACE TREATMENT
- ▶ MICROPHYSICS

Submit

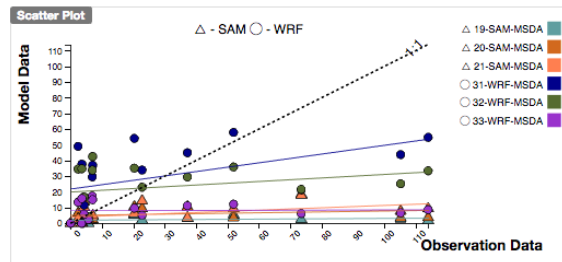
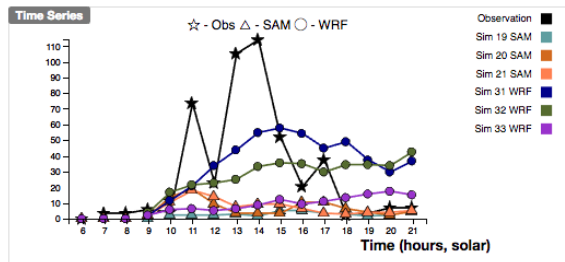
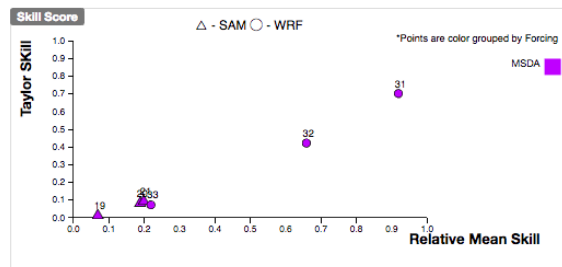
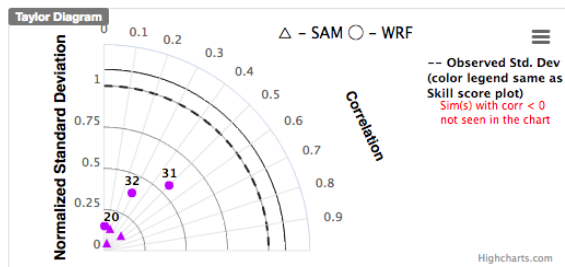
Overview Plots

Heat Maps

Metrics

Date: June 27, 2015

Measurement: Liquid Water Path (LWP) (g/m<sup>2</sup>)



**Skill Scores on June 27, 2015**

Measurement Skill: 0 to 1 slider

1D Cloud Skill: 0 to 1 slider

2D Cloud Mask Skill: 0 to 1 slider

Total Cloud Skill: 0 to 1 slider

Slide orange sliders to adjust min and max skill ranges

Copy CSV Print PDF

Search:

Simulation ID	Measurement Skill (Liquid Water Path (LWP))	1D Cloud Skill	2D Cloud Mask Skill	Total Cloud Skill
19 (Diagnostics) (Data)	0.02	0.01	0.08	0.03
20 (Diagnostics) (Data)	0.12	0.19	0.23	0.21
21 (Diagnostics) (Data)	0.14	0.26	0.28	0.27
31 (Diagnostics) (Data)	0.8	0.68	0.29	0.44
32 (Diagnostics) (Data)	0.53	0.53	0.28	0.39
33 (Diagnostics) (Data)	0.12	0.19	0.19	0.19

Showing 1 to 6 of 6 entries

Previous 1 Next



# Existing: Alpha 1 features

- Data indexed by model type, LS forcing, initial conditions, etc found on the left panel on the page for easy lookup
- Retrieve data on the fly from Cassandra (database) to draw 4 different plots and skill score table
- Changing slider skill values to update data table
- Links to quicklook plots for all simulations and dates
- Link to each simulation data for download

**Introduction**

Welcome to the LASSO Bundle Browser that is designed to assist users with identifying LASSO large-eddy simulations (LES) of interest for their research. The plots and associated data table update dynamically based on user search criteria, and links within the table enable direct access to order the data bundles of the displayed simulations. More information on LASSO and the data bundles can be found at the [LASSO home page](#) and on the [Alpha 1 Release web page](#). Note that this is an initial evaluation version of the browser that specifically queries and displays observed and simulated cloud properties for the five days worth of simulations released in the LASSO Alpha 1 release. There are 192 simulations between the five days that differ in terms of the LES model, forcing dataset, domain size, and model physics.

Select All

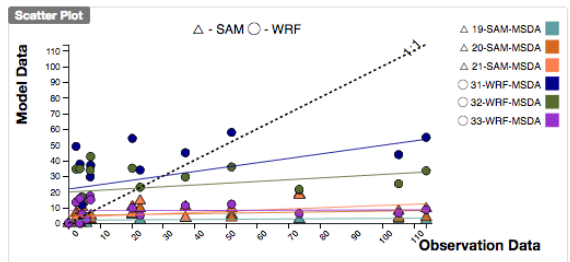
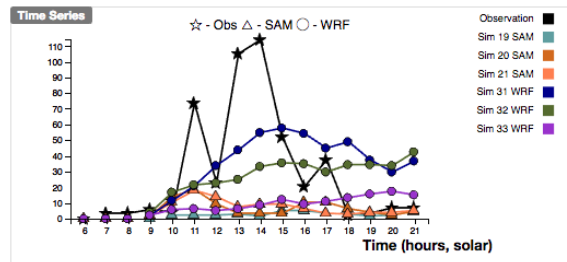
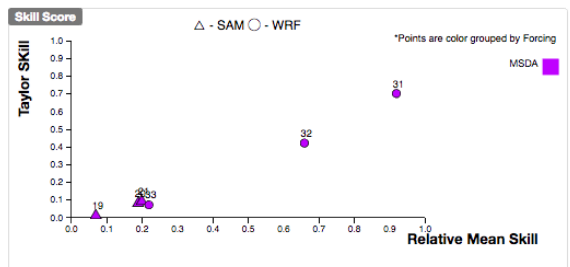
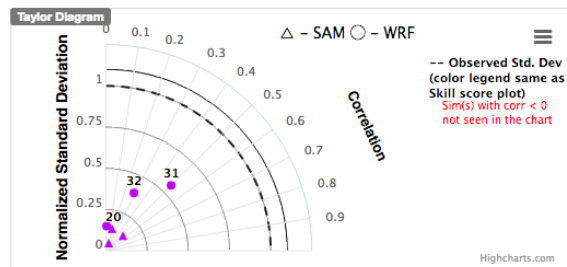
- ▶ DATE
- ▶ MEASUREMENTS
- ▶ MODEL TYPE
- ▶ OUTPUT DOMAIN SIZE
- ▶ NUMBER OF LEVELS
- ▶ LARGE SCALE FORCING
- ▶ LARGE SCALE FORCING SCALE
- ▶ INITIAL CONDITION
- ▶ SURFACE TREATMENT
- ▶ MICROPHYSICS

Submit

- Overview Plots**
- Heat Maps
  - Metrics

Date: June 27, 2015

Measurement: Liquid Water Path (LWP) (g/m<sup>2</sup>)



**Skill Scores on June 27, 2015**

Measurement Skill:

1D Cloud Skill:

2D Cloud Mask Skill:

Total Cloud Skill:

Slide orange sliders to adjust min and max skill ranges

Copy CSV Print PDF

Simulation ID	Measurement Skill (Liquid Water Path (LWP))	1D Cloud Skill	2D Cloud Mask Skill	Total Cloud Skill
19 (Diagnostics) (Data)	0.02	0.01	0.08	0.03
20 (Diagnostics) (Data)	0.12	0.19	0.23	0.21
21 (Diagnostics) (Data)	0.14	0.26	0.28	0.27
31 (Diagnostics) (Data)	0.8	0.68	0.29	0.44
32 (Diagnostics) (Data)	0.53	0.53	0.28	0.39
33 (Diagnostics) (Data)	0.12	0.19	0.19	0.19

Showing 1 to 6 of 6 entries Previous  Next

# Alpha 2 features – In development

## In the demo

- Bread crumbs on top the charts (on the right) to list the selected values from the accordion on the left
- All charts redrawn to match the simulations in data table when the slider values are changed
- Second tab to plot one variable vs another as a scatter diagram

## Yet to feature

- Ability to compare across multiple dates
- Better handling of different display sizes

Introduction

Welcome to the LASSO Bundle Browser that is designed to assist users with identifying LASSO large-eddy simulations (LES) of interest for their research. The plots and associated data table update dynamically based on user search criteria, and links within the table enable direct access to order the data bundles of the displayed simulation. More information on LASSO and the data bundles can be found at the [LASSO home page](#) and on the [Alpha 1 Release web page](#). Note that this is an initial evaluation version of the browser that specifically queries and displays observed and simulated cloud properties for the five days worth of simulation released in the LASSO Alpha 1 release. There are 192 simulations between the five days that differ in terms of the LES model, forcing data, domain size, and model physics.

Home Multi Variable Scatter Plot

Select All

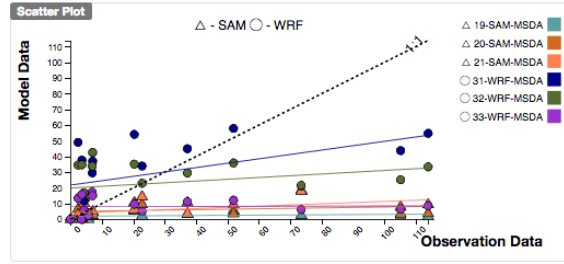
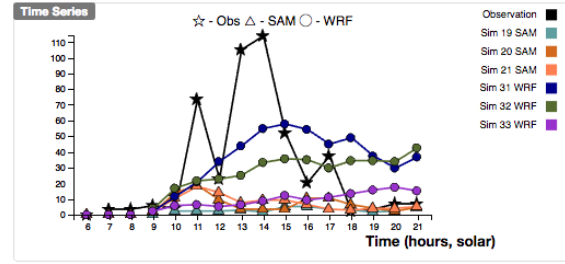
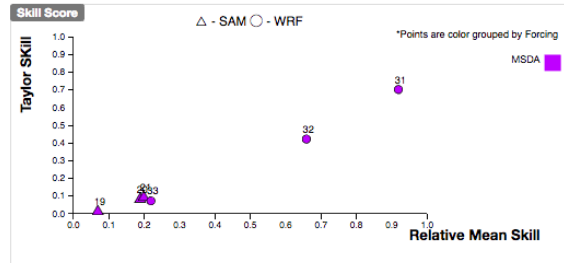
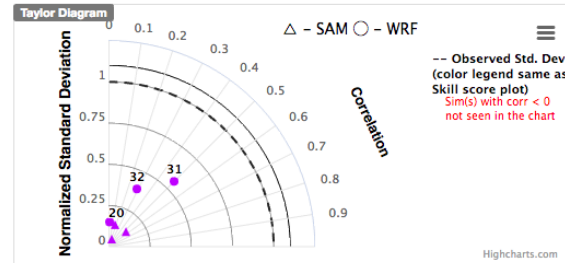
- DATE
- MEASUREMENTS
- MODEL TYPE
- OUTPUT DOMAIN SIZE
- NUMBER OF LEVELS
- LARGE SCALE FORCING
- LARGE SCALE FORCING SCALE
- INITIAL CONDITION
- SURFACE TREATMENT
- MICROPHYSICS

Submit

- Overview Plots
- Heat Maps
  - Metrics

Date: June 27, 2015

- Model Type: WRF
- Model Type: SAM
- Output Domain Size: 14.4 km
- Number of Levels: 226 levels
- Number of Levels: 304 levels
- Large Scale Forcing: ECMWF
- Large Scale Forcing: MSDA
- Large Scale Forcing Scale: 75 km
- Large Scale Forcing Scale: 150 km
- Large Scale Forcing Scale: 900 km
- Initial Condition: ECMWF
- Initial Condition: MSDA
- Surface Treatment: ECMWF
- Surface Treatment: MSDA
- Microphysics: Morrison
- Microphysics: Morrison (Ni upper limit updated)



Skill Scores on June 27, 2015

Measurement Skill:

1D Cloud Skill:

2D Cloud Mask Skill:

Total Cloud Skill:

Slide orange sliders to adjust min and max skill ranges

Copy CSV Print PDF

Simulation ID	Measurement Skill (Liquid Water Path (LWP))	1D Cloud Skill	2D Cloud Mask Skill	Total Cloud Skill
19 (Diagnostics) (Data)	0.02	0.01	0.08	0.03
20 (Diagnostics) (Data)	0.12	0.19	0.23	0.21
21 (Diagnostics) (Data)	0.14	0.26	0.28	0.27
31 (Diagnostics) (Data)	0.8	0.68	0.29	0.44
32 (Diagnostics) (Data)	0.53	0.53	0.28	0.39
33 (Diagnostics) (Data)	0.12	0.19	0.19	0.19

Showing 1 to 6 of 6 entries Previous  Next

Trailer approved. Main picture yet to be certified 😊



Search Google or type URL

armdev-java

LASSO Bundle Brows

