

Tar Balls from Biomass Burning

Morphological Studies

Swarup China, Giulia Giroto, Janarjan Bhandari, Kyle Gorkowski, Manvendra Dubey, Allison Aiken, Barbara V. Scarnato, Tyler Capek, Angela Marinoni, Daniel P. Veghte, Gourihar Kulkarni, Claudio Mazzoleni



U.S. DEPARTMENT OF
ENERGY

Office of
Science

EMSL 

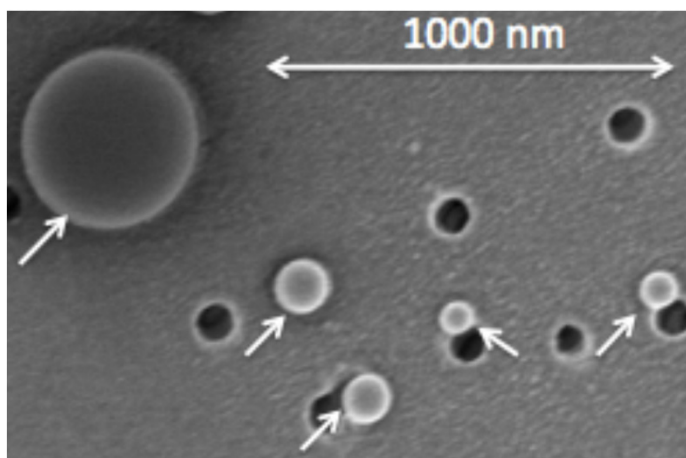


Michigan
Technological
University

Tar Balls from Biomass Burning

Morphological Studies

Swarup China, Giulia Giroto, Janarjan Bhandari, Kyle Gorkowski, Manvendra Dubey, Allison Aiken, Barbara V. Scarnato, Tyler Capek, Angela Marinoni, Daniel P. Veghte, Gourihar Kulkarni, Claudio Mazzoleni



U.S. DEPARTMENT OF
ENERGY | Office of
Science

EMSL

Los Alamos
NATIONAL LABORATORY
EST. 1943

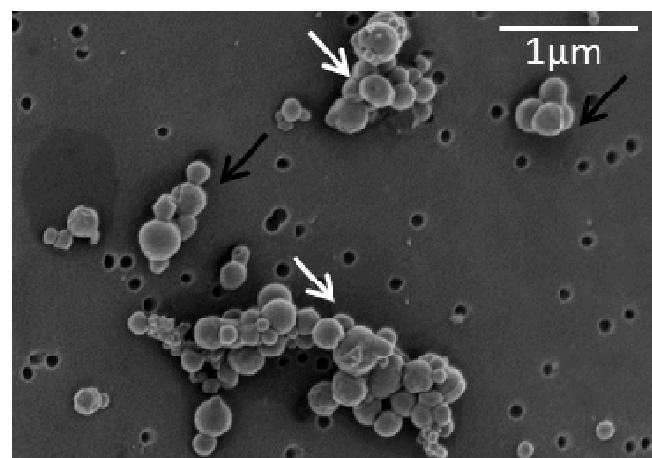
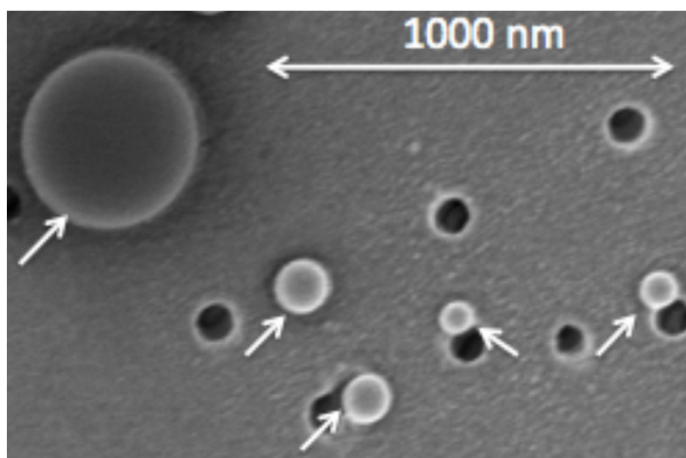


Michigan
Technological
University

Tar Balls from Biomass Burning

Morphological Studies

Swarup China, Giulia Giroto, Janarjan Bhandari, Kyle Gorkowski, Manvendra Dubey, Allison Aiken, Barbara V. Scarnato, Tyler Capek, Angela Marinoni, Daniel P. Veghte, Gourihar Kulkarni, Claudio Mazzoleni



U.S. DEPARTMENT OF
ENERGY | Office of
Science

EMSL

Los Alamos
NATIONAL LABORATORY
EST. 1943

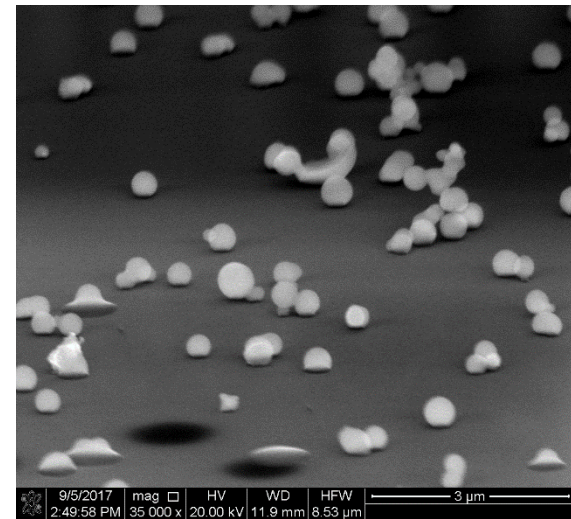


Michigan
Technological
University

Tar Balls

TBs defined by electron microscopy:

- Spherical
- ~ 100-300 nm diameter
- Resistant to the electron beam
- Amorphous nanostructure
- Mostly composed of Carbon and Oxygen
- Thermally, rather stable

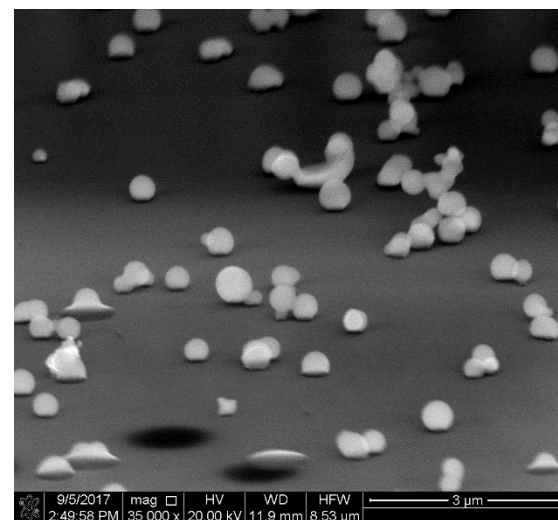


Courtesy Swarup China – Richland, WA, 2017

Tar Balls

TBs defined by electron microscopy:

- Spherical
- ~ 100-300 nm diameter
- Resistant to the electron beam
- Amorphous nanostructure
- Mostly composed of Carbon and Oxygen
- Thermally, rather stable



Courtesy Swarup China – Richland, WA, 2017

Some challenges:

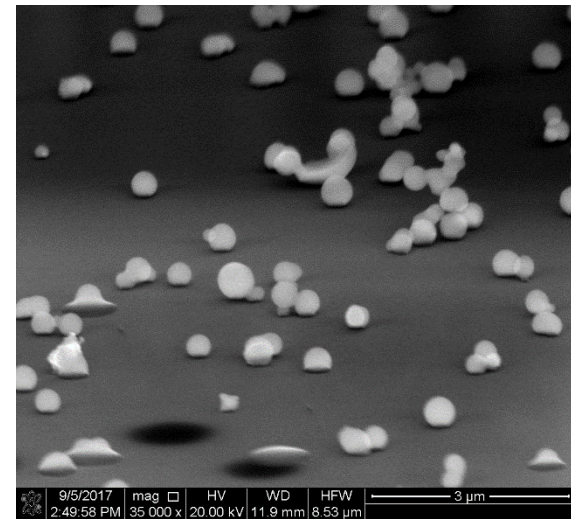
- Abundance very variable depending on source, plume age, combustion conditions...
- Formation processes and evolution
- Large range in published values of the material optical properties
(e.g., k [imaginary part of the index of refraction] $\rightarrow \sim 0.002 - 0.27$)

E. g.: Pósfai, et al. *JGR*, 2004
Hand, et al. *JGR*, 2005
Tivanski, et al. *J Phys. Chem.*, 2007
Alexander, et al. *Science*, 2008
Chakrabarty, et al. *ACP*, 2010
Adachi and Buseck, *JGR*, 2011
China et al., *Nat Comm.*, 2013
Hoffer, et al. *ACP*, 2016
Hoffer, et al. *AMT*, 2017
Sedlacek, et al. *ACPD*, 2018
Tóth et al., *ACPD*, 2018

Tar Balls

TBs defined by electron microscopy:

- Spherical
- ~ 100-300 nm diameter
- Resistant to the electron beam
- Amorphous nanostructure
- Mostly composed of Carbon and Oxygen
- Thermally, rather stable

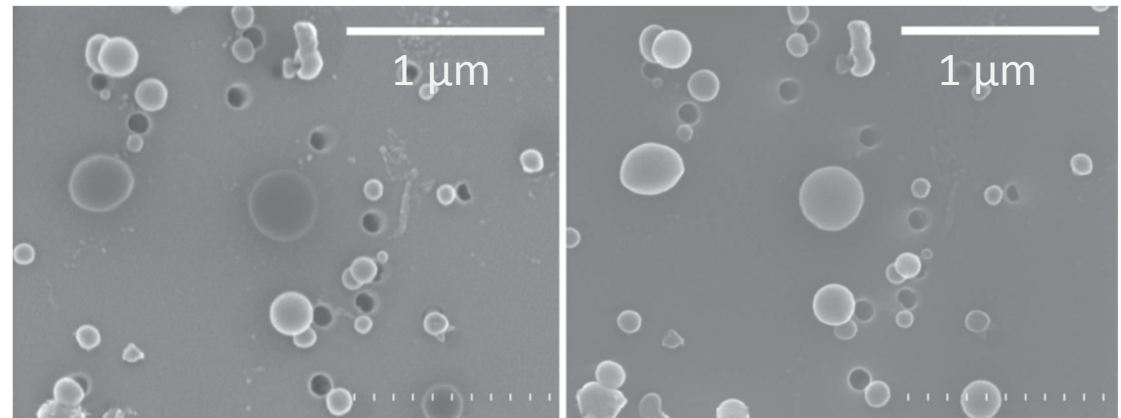


Courtesy Swarup China – Richland, WA, 2017

Some challenges:

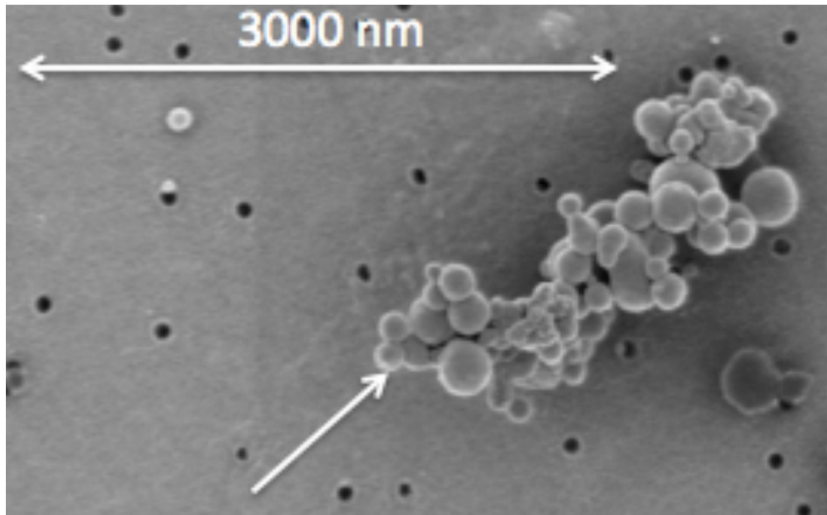
- Abundance very variable depending on source, plume age, combustion conditions...
- Formation processes and evolution
- Large range in published values of the material optical properties
(e.g., k [imaginary part of the index of refraction] $\rightarrow \sim 0.002 - 0.27$)

E. g.: Pósfai, et al. *JGR*, 2004
Hand, et al. *JGR*, 2005
Tivanski, et al. *J Phys. Chem.*, 2007
Alexander, et al. *Science*, 2008
Chakrabarty, et al. *ACP*, 2010
Adachi and Buseck, *JGR*, 2011
China et al., *Nat Comm.*, 2013
Hoffer, et al. *ACP*, 2016
Hoffer, et al. *AMT*, 2017
Sedlacek, et al. *ACPD*, 2018
Tóth et al., *ACPD*, 2018



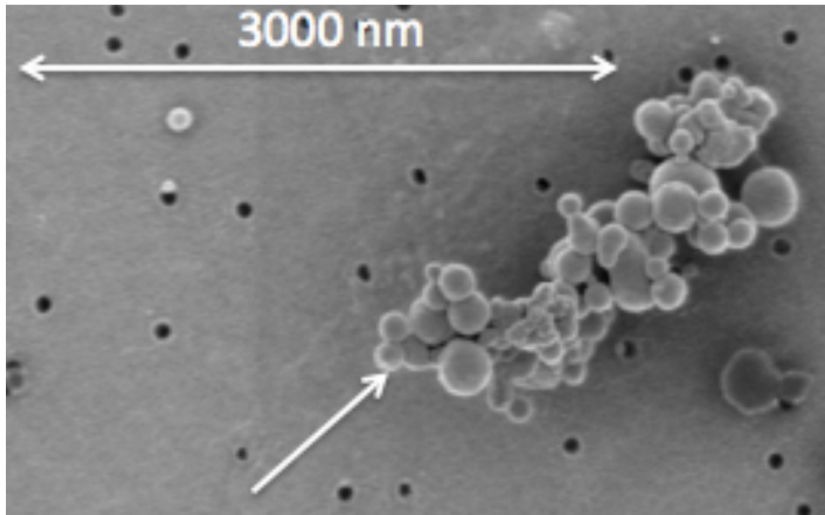
China et al., *Nat Comm.*, 2013 Las Conchas Fire, NM (2011)

Tar Balls Aggregates

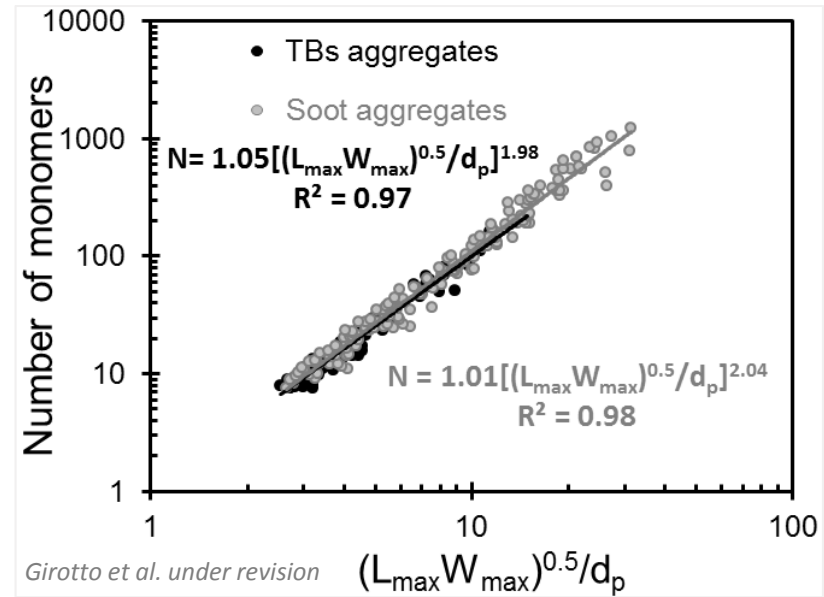


Whitewater-Baldy Complex fire, NM (2012)

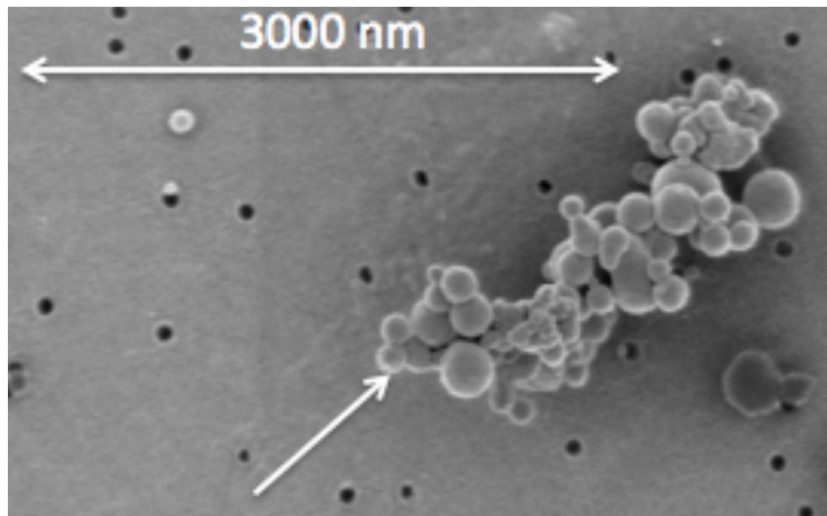
Tar Balls Aggregates



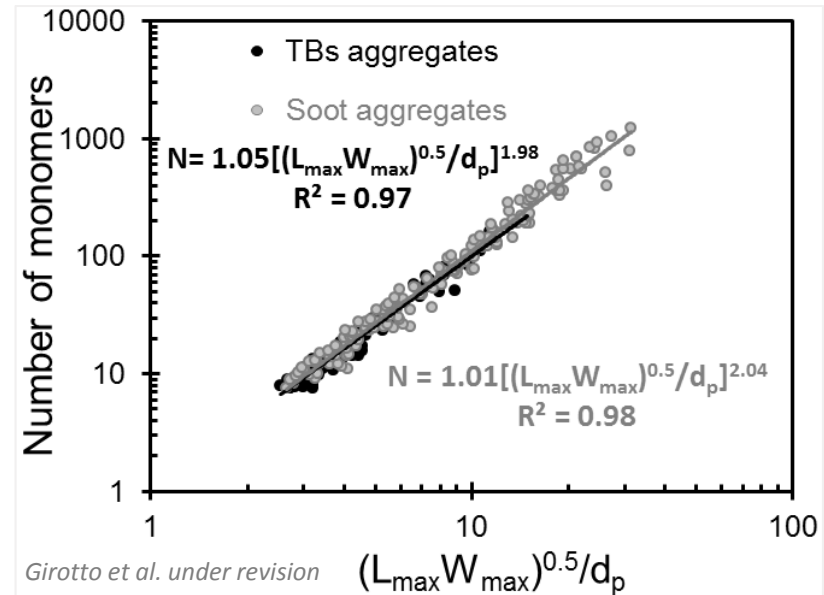
Whitewater-Baldy Complex fire, NM (2012)



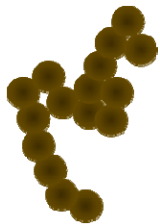
Tar Balls Aggregates



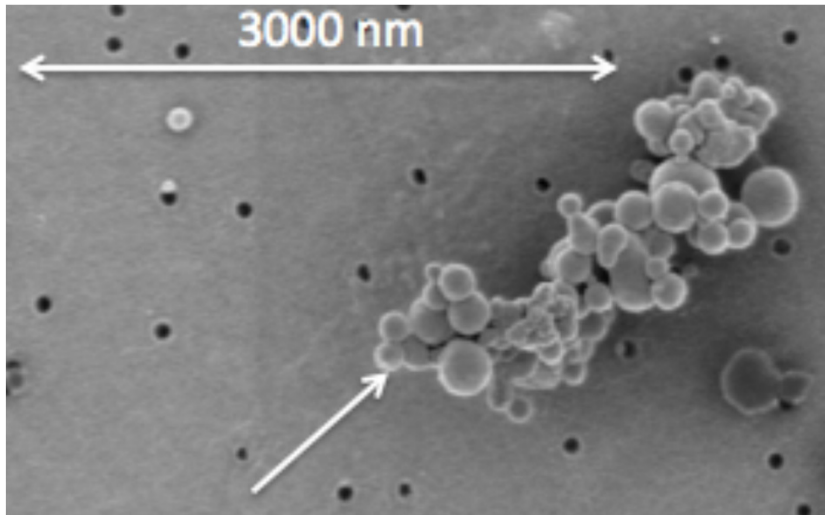
Whitewater-Baldy Complex fire, NM (2012)



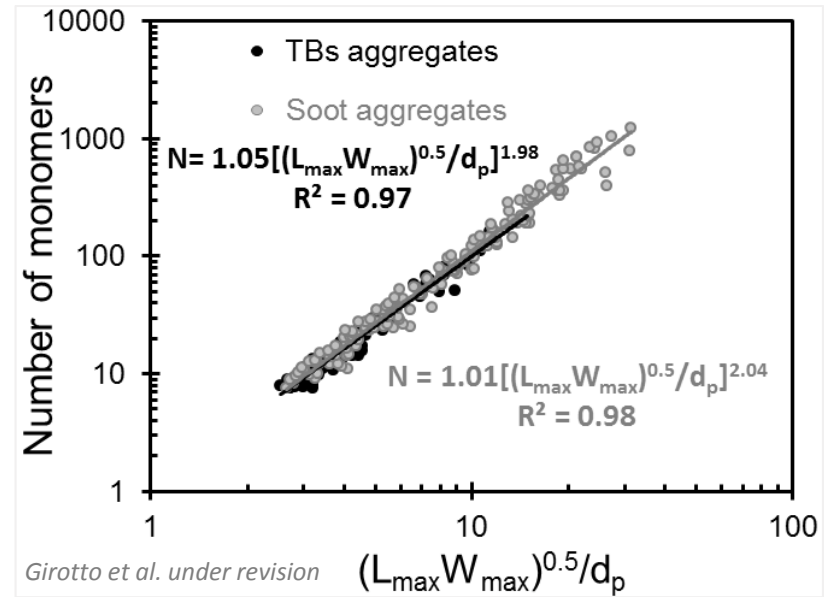
Aggregates
(T-matrix)



Tar Balls Aggregates



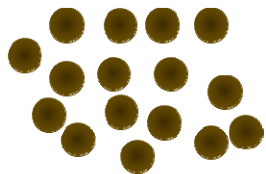
Whitewater-Baldy Complex fire, NM (2012)



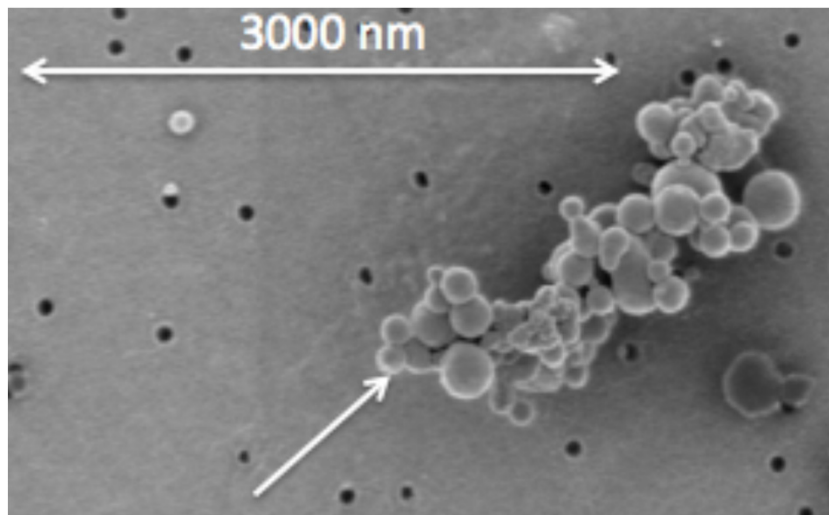
Aggregates
(T-matrix)



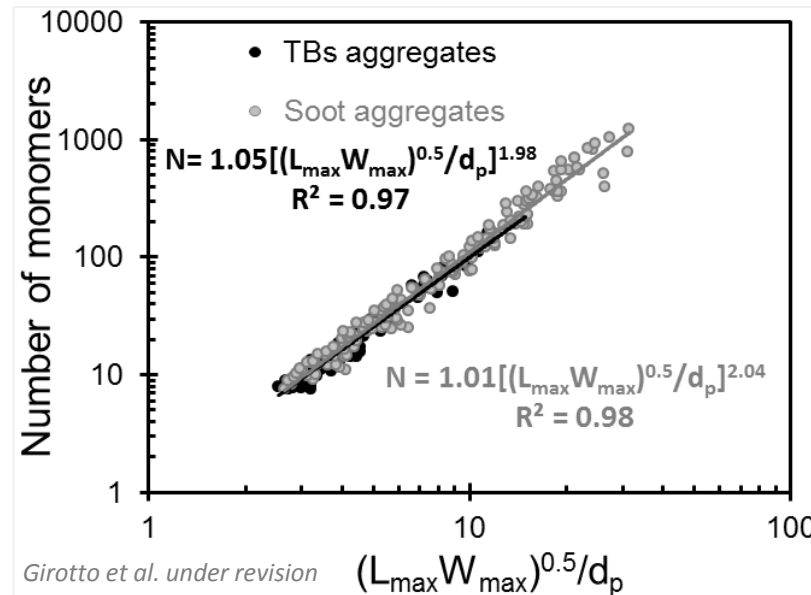
Individual TBs
(Lorenz-Mie)



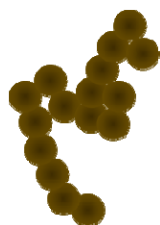
Tar Balls Aggregates



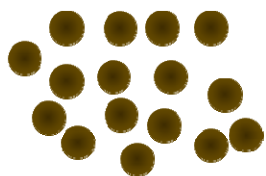
Whitewater-Baldy Complex fire, NM (2012)



Aggregates
(T-matrix)



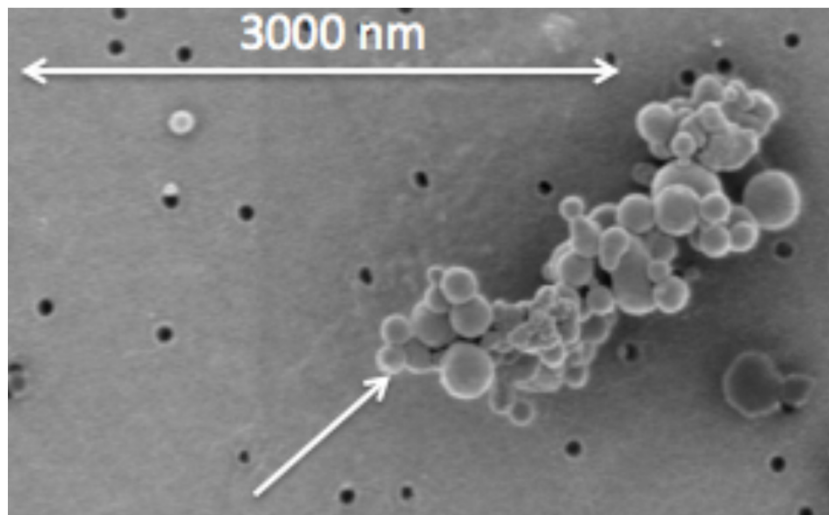
Individual TBs
(Lorenz-Mie)



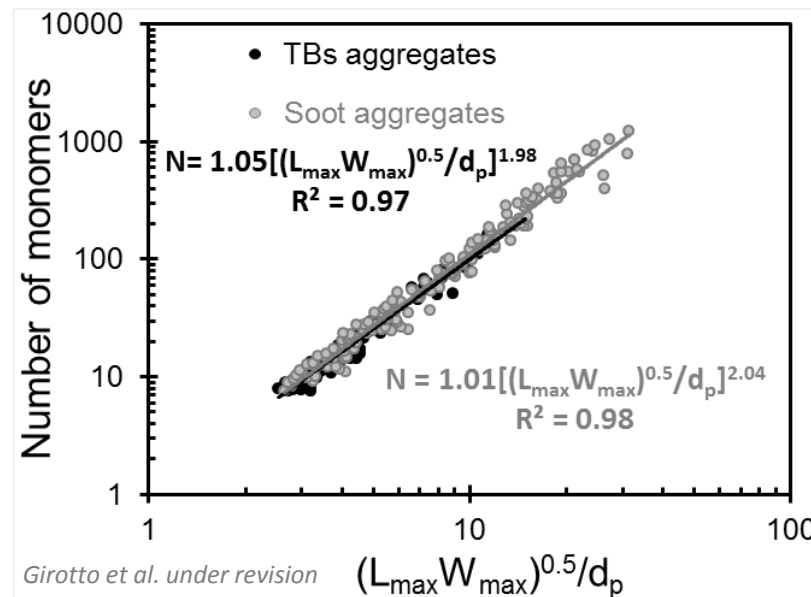
Volume equivalent
(Lorenz-Mie)



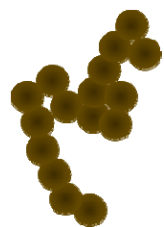
Tar Balls Aggregates



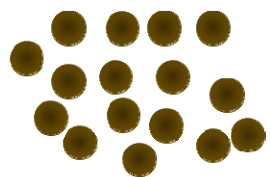
Whitewater-Baldy Complex fire, NM (2012)



Aggregates
(T-matrix)



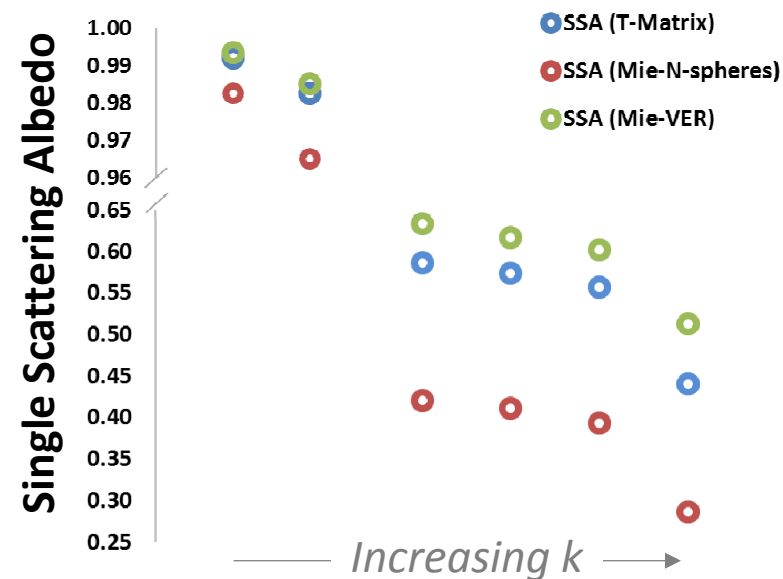
Individual TBs
(Lorenz-Mie)



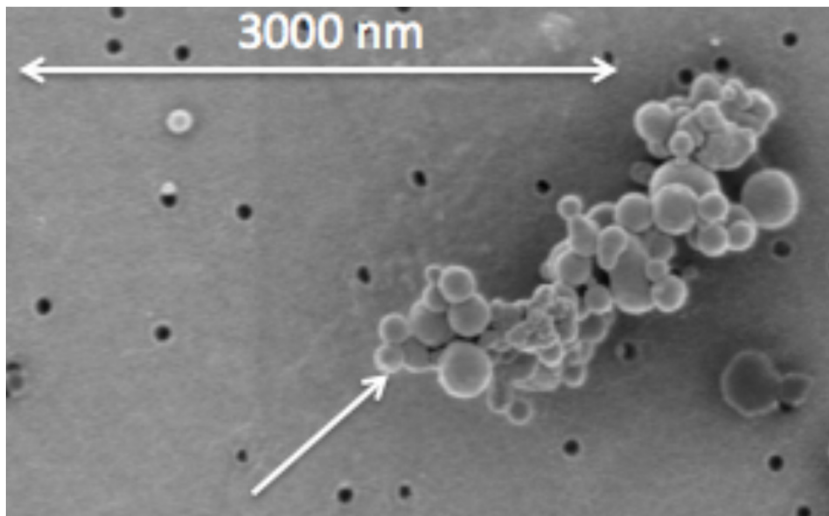
Volume equivalent
(Lorenz-Mie)



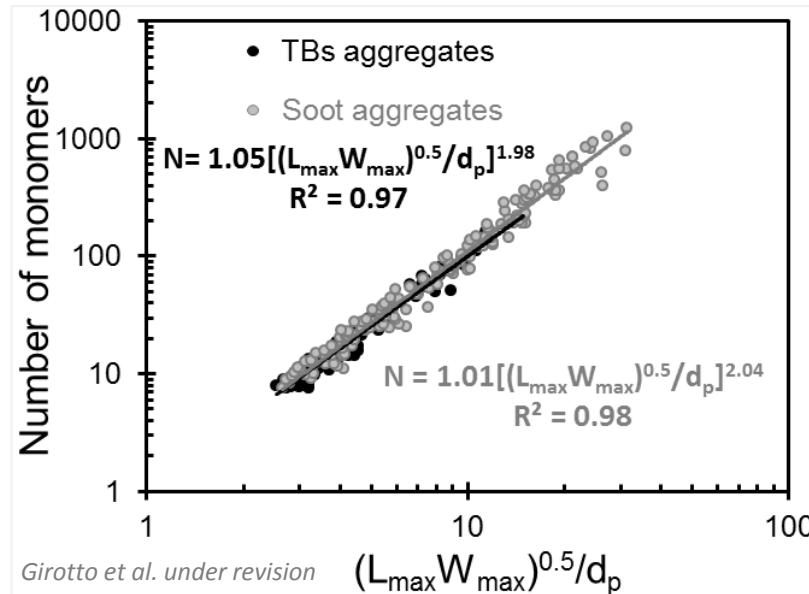
Bhandari et al. in preparation



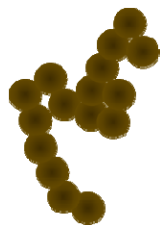
Tar Balls Aggregates



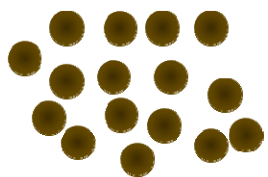
Whitewater-Baldy Complex fire, NM (2012)



Aggregates
(T-matrix)



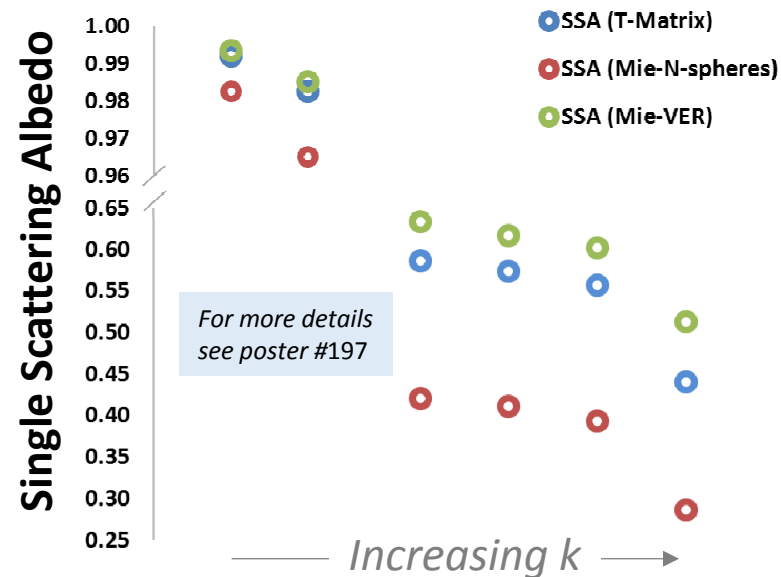
Individual TBs
(Lorenz-Mie)



Volume equivalent
(Lorenz-Mie)

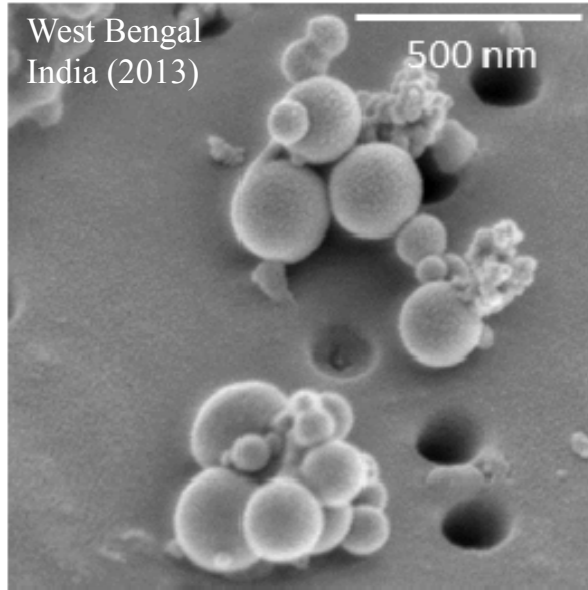


Bhandari et al. in preparation

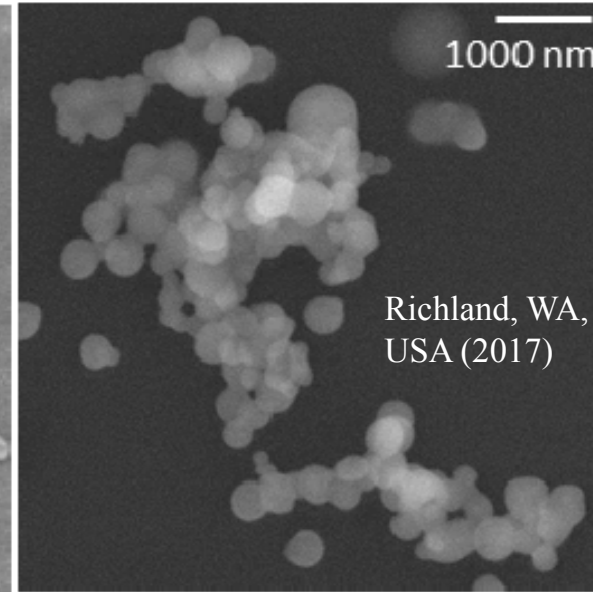
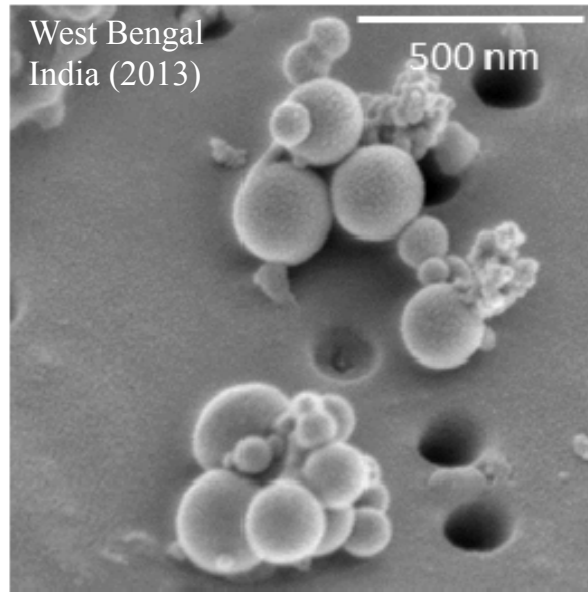


TBs aggregates from other plumes

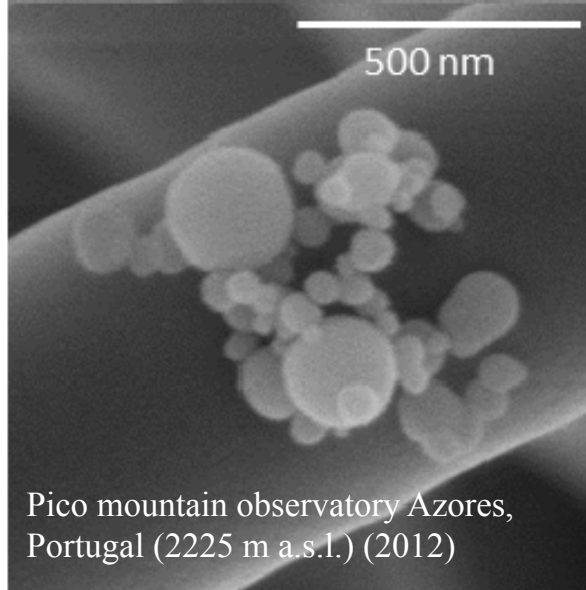
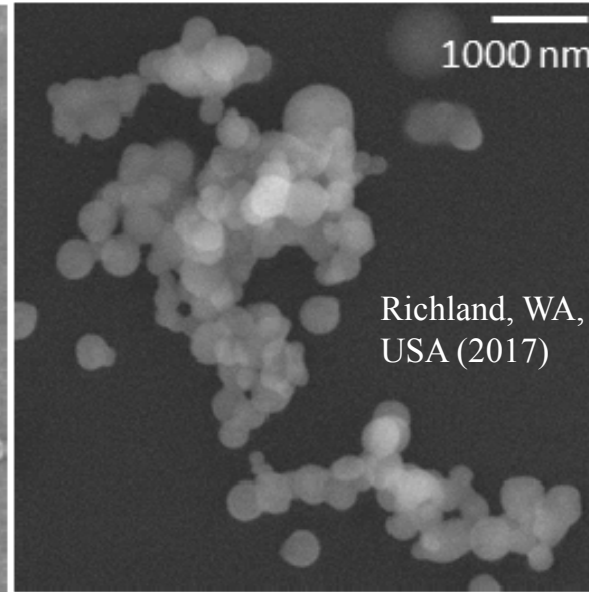
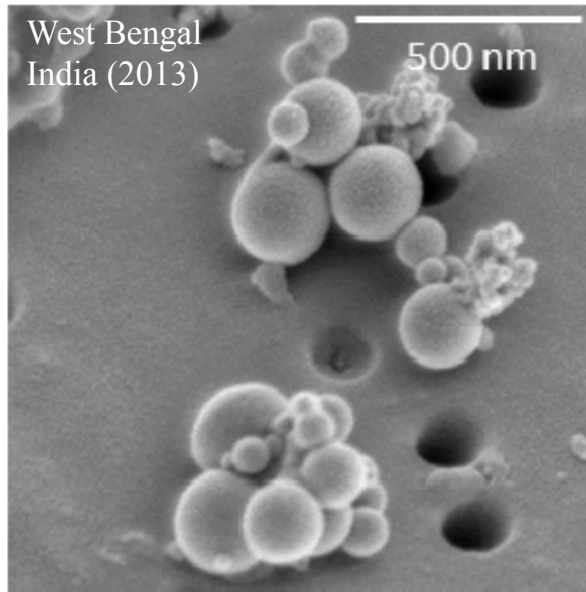
TBs aggregates from other plumes



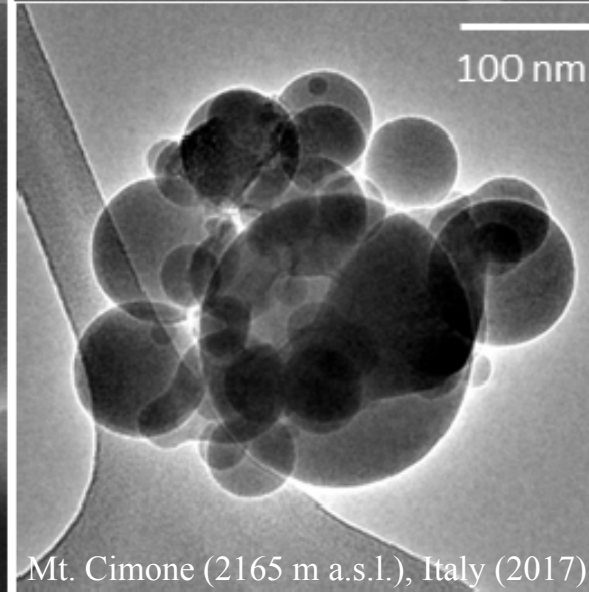
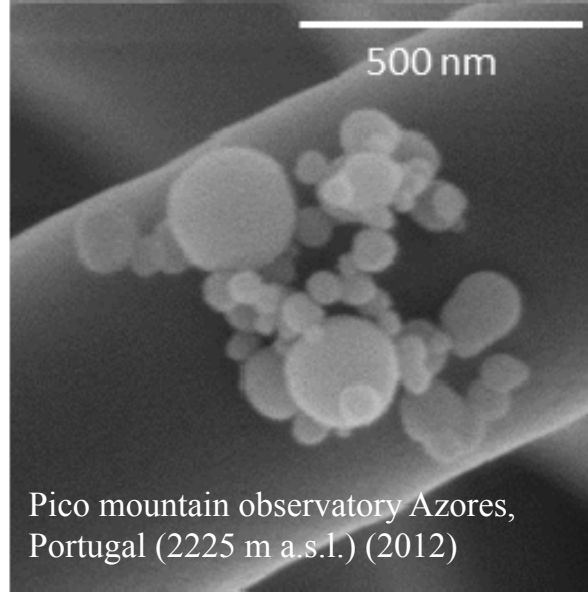
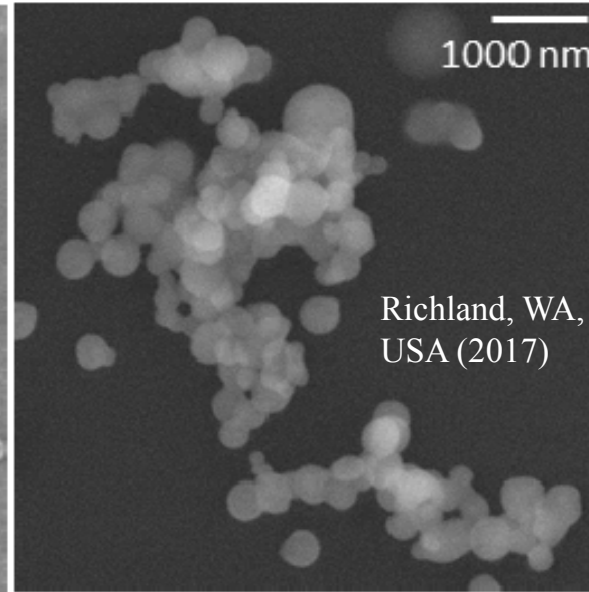
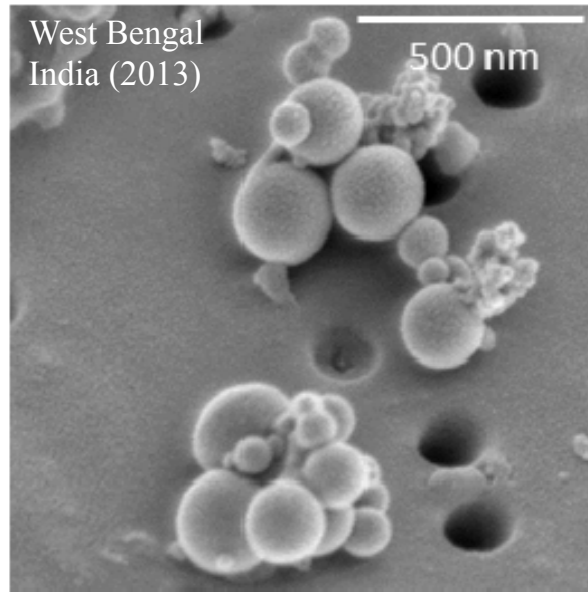
TBs aggregates from other plumes



TBs aggregates from other plumes



TBs aggregates from other plumes



TBs aggregates from other plumes

