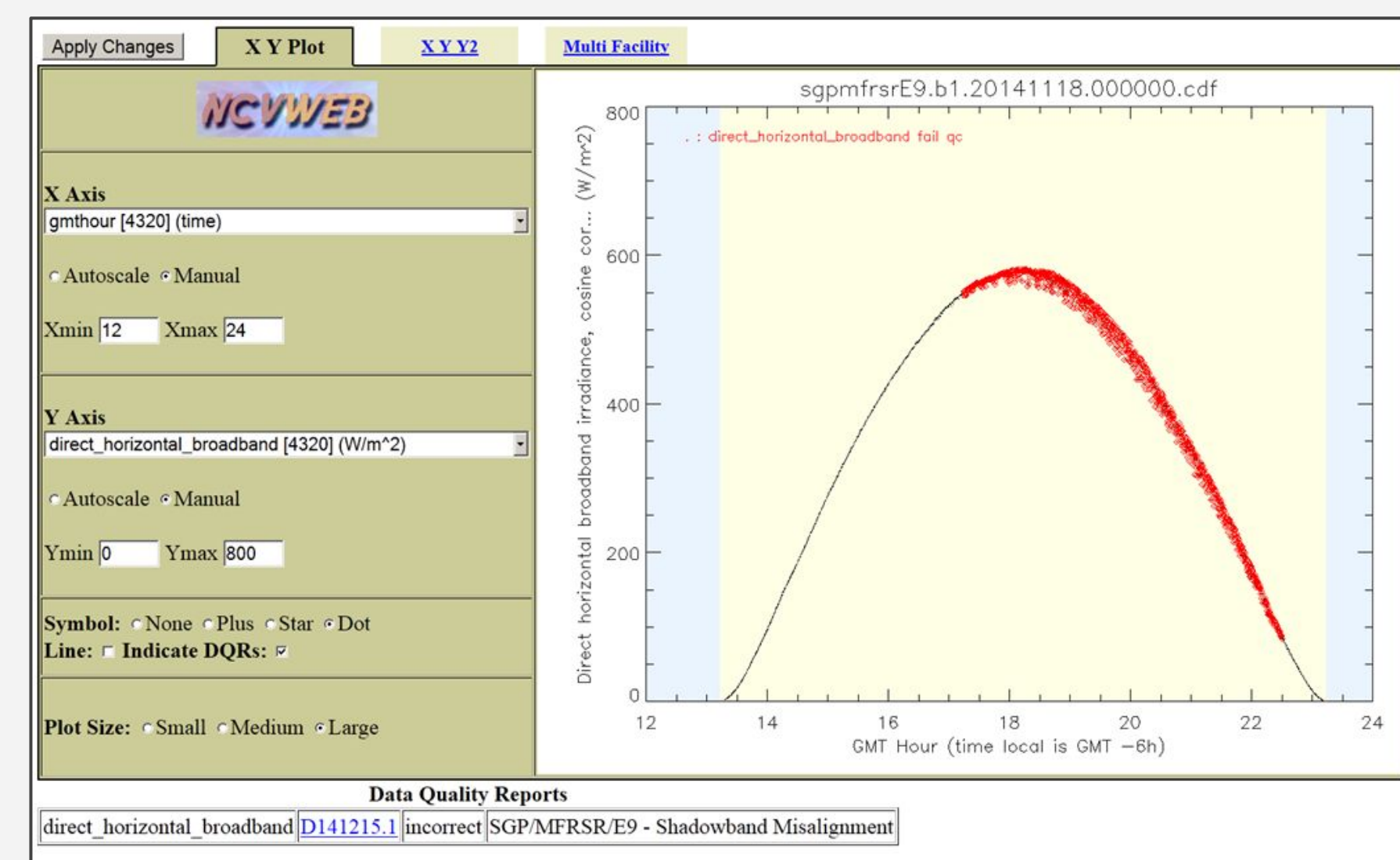


## Data Quality Report (DQR) Webservice

- World accessible mechanism to query the DQR database
- Returns a list of time blocks that delineate known periods of problematic data
- Easily parse response from any programming language. We provide examples!
- Incorporate service into your data analysis workflow for always up-to-date filtering of incorrect or suspect data records

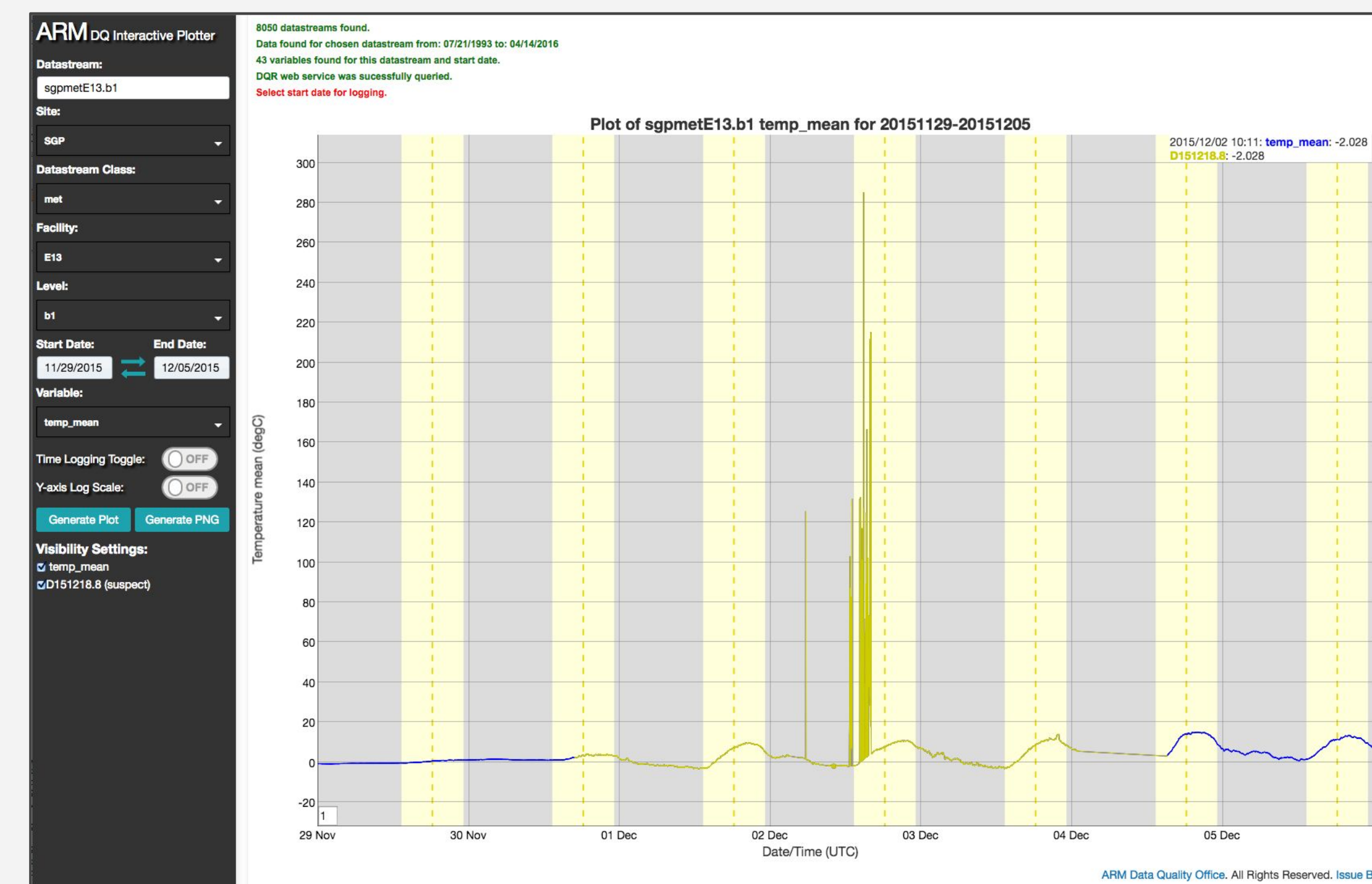
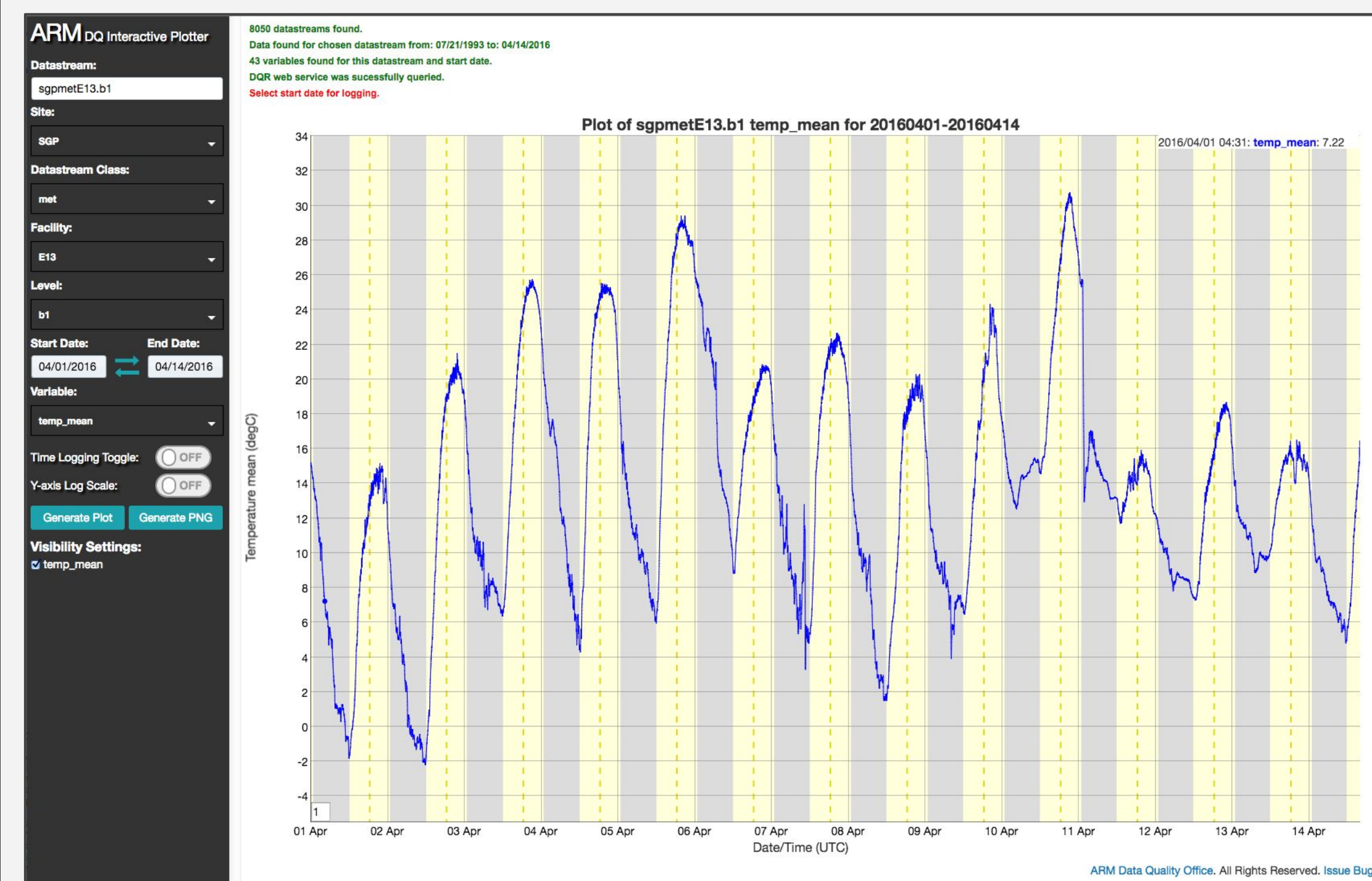
[http://www.archive.arm.gov/dqrws/ARMDQR?datastream=sgpmfrsE9.b1&varname=direct\\_horizontal\\_broadband&timeformat=YYYYMMDD.hhmmss](http://www.archive.arm.gov/dqrws/ARMDQR?datastream=sgpmfrsE9.b1&varname=direct_horizontal_broadband&timeformat=YYYYMMDD.hhmmss)

```
20141117.171500|20141117.223000
20141118.171500|20141118.223000
20141119.171500|20141119.223000
20141120.171500|20141120.223000
```



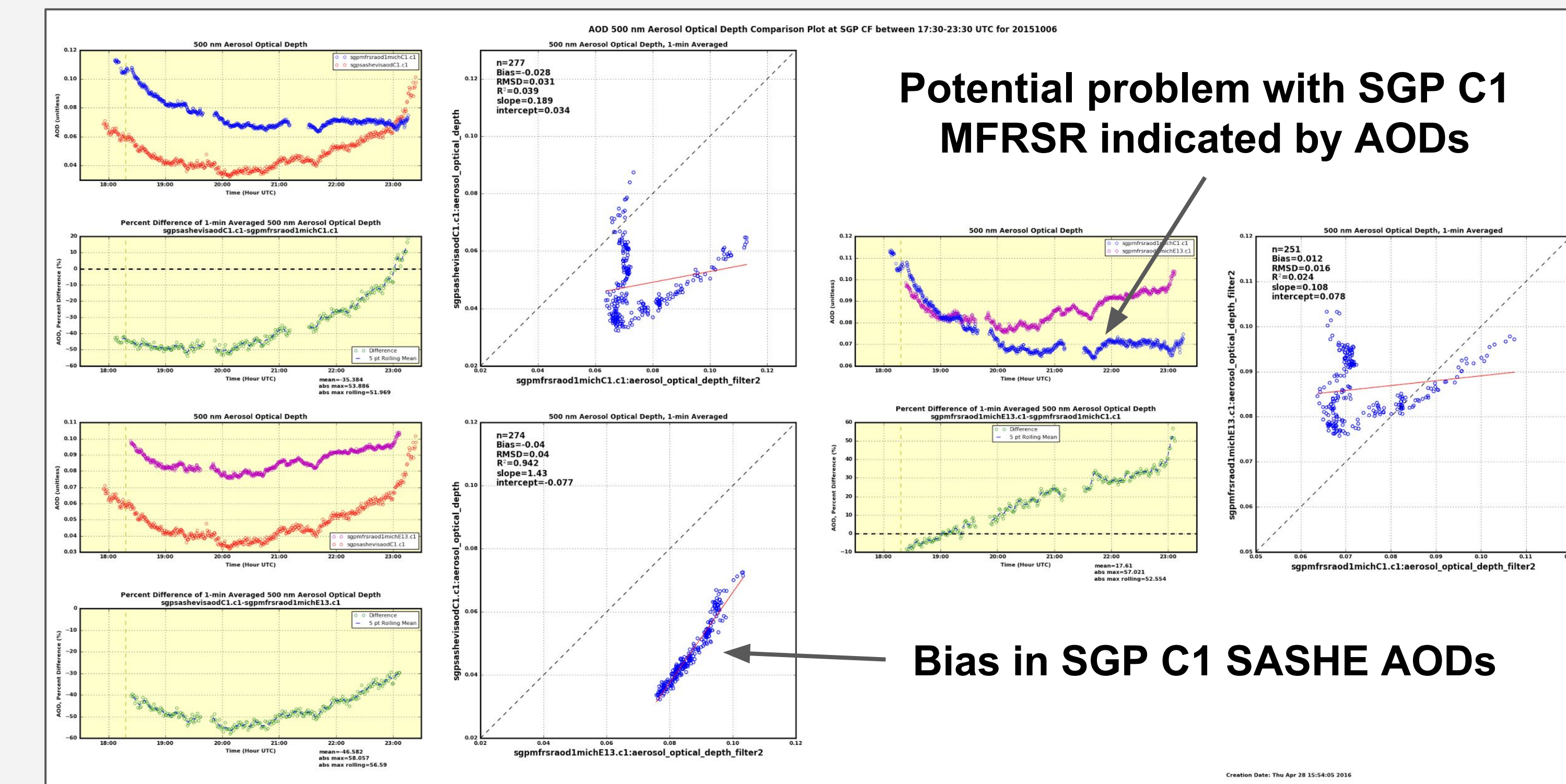
## DQ Zoom

- Click and drag zooming
- Value display on mouseover
- Slices of 2D variables
- DQR overlay and linking
- Time logging with file export in DQR-ready format
- On-the-fly smoothing, linear/log axis
- PNG export



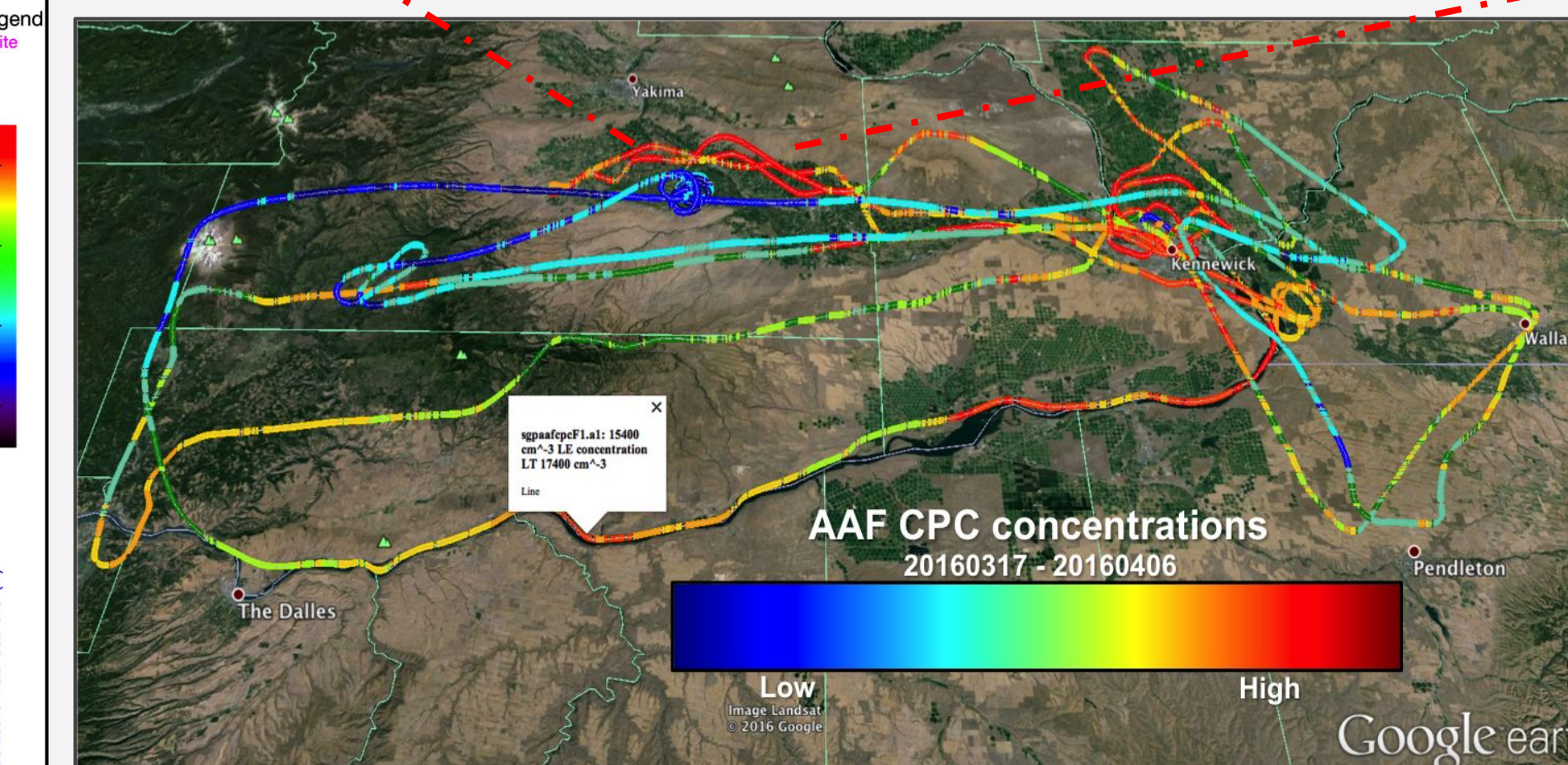
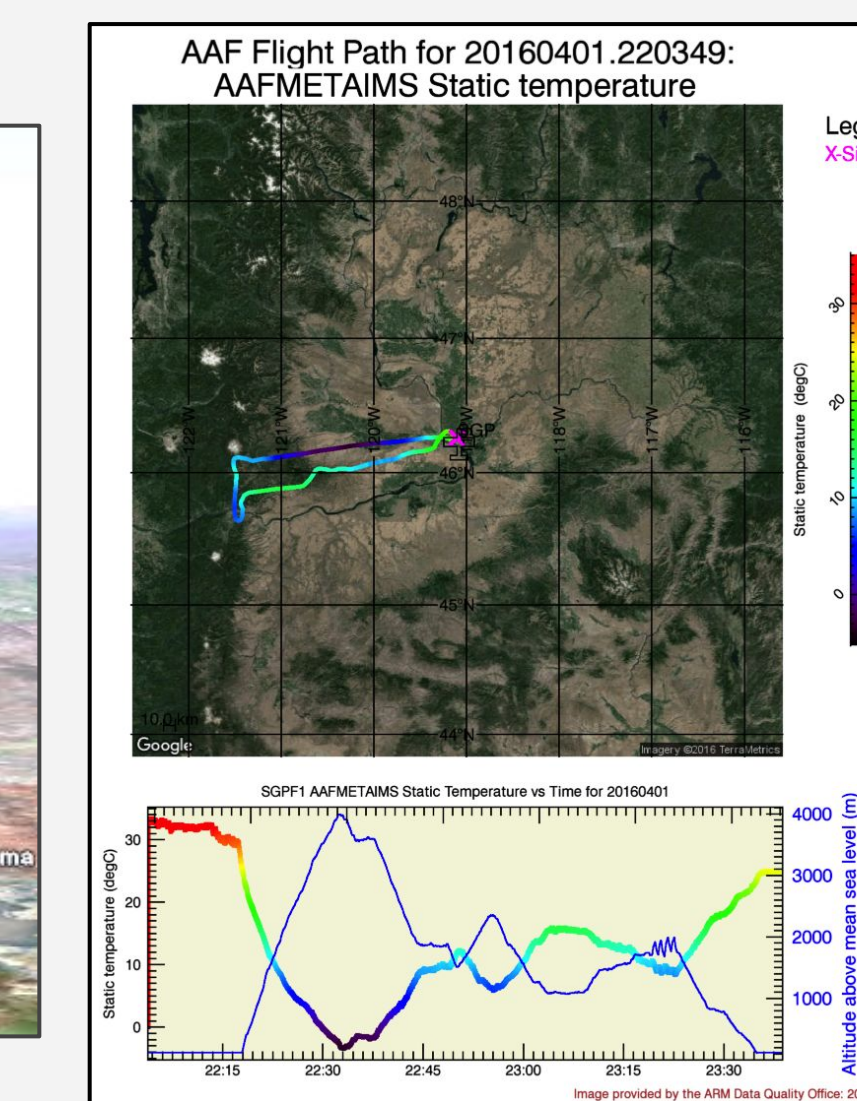
## Python Datastream Comparison Tools

- Generic datastream comparison framework
- Custom time ranges, data filtering, and resampling
- Multiple plot types, custom placement/sizes



## Geospatial Analysis

- Capability to convert geospatial data to KML
  - 3D display (e.g., Google Earth)
- 2D static geospatial plots for routine inspection and diagnosis



## DQ<sup>2D</sup> (Beta)

- 2D Interactive Plots
- Value display on mouseover
- Statistics (Min/Max/Stdev)
- Click and drag zooming
- Lidars, Radars, Aerosols, Precipitation (DSD)

