

ARM Southern Great Plains (SGP)

M. Ritsche, A. Theisen, N. Hickmon

Session A2, #56 Tue 5-6:30

Central Facility(CF) Extended Facility(EF) Intermediate Facility(IF)

Profiling Modules

- AERI
- Doppler Lidar
- MWR3C

EF32, EF37, EF39, EF41

Intermediate Facilities

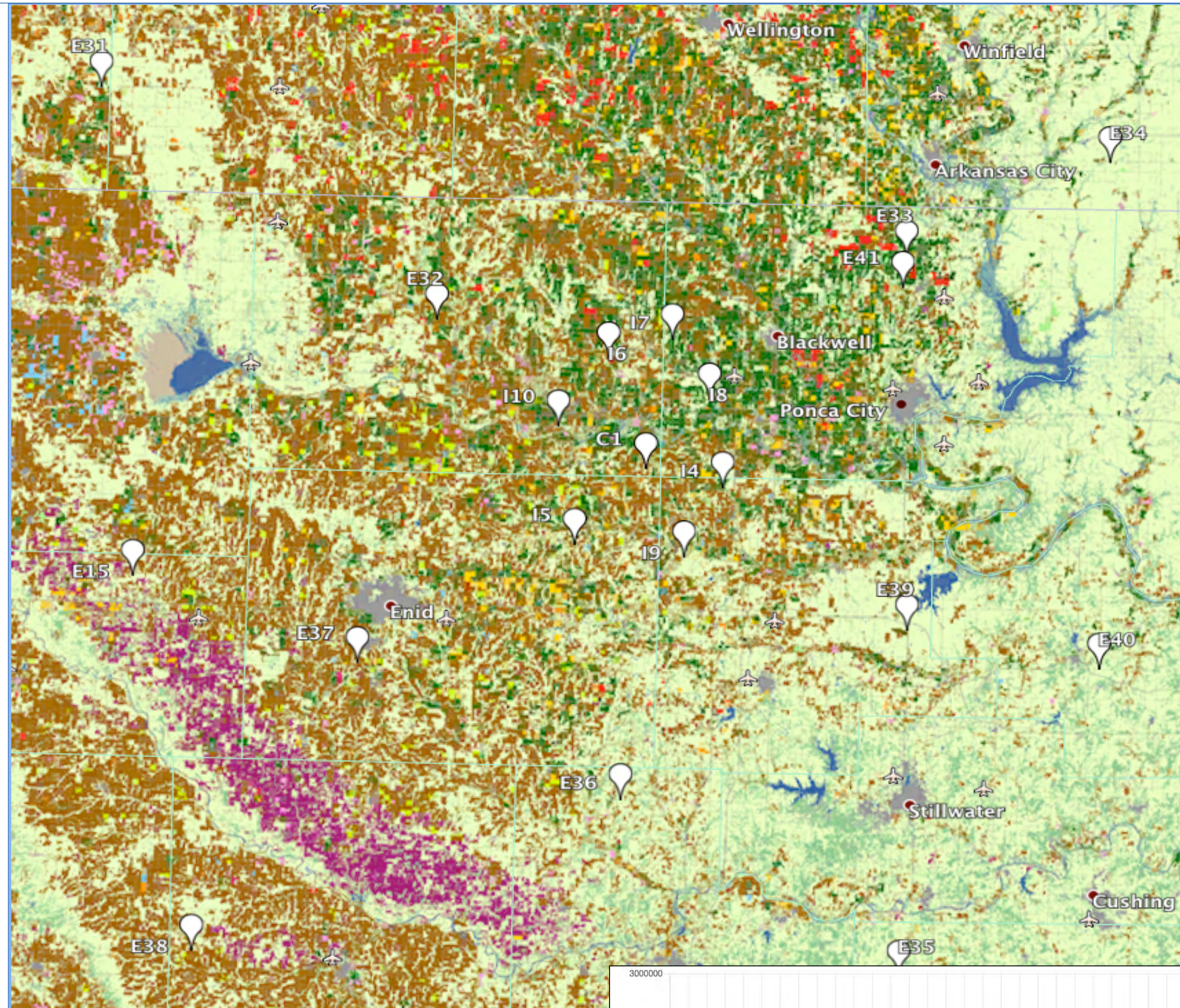
- RWP
 - LDIS
 - TBRG
 - MET
- IF8, IF9, IF10

Extended Facilities

- MET
- EBBR
- ECOR
- SEBS
- STAMP
- IRT
- MFRSR
- SIRS

EF9, 11, 12, 13, 15, 31 - 41

TBS/UAV Campaigns

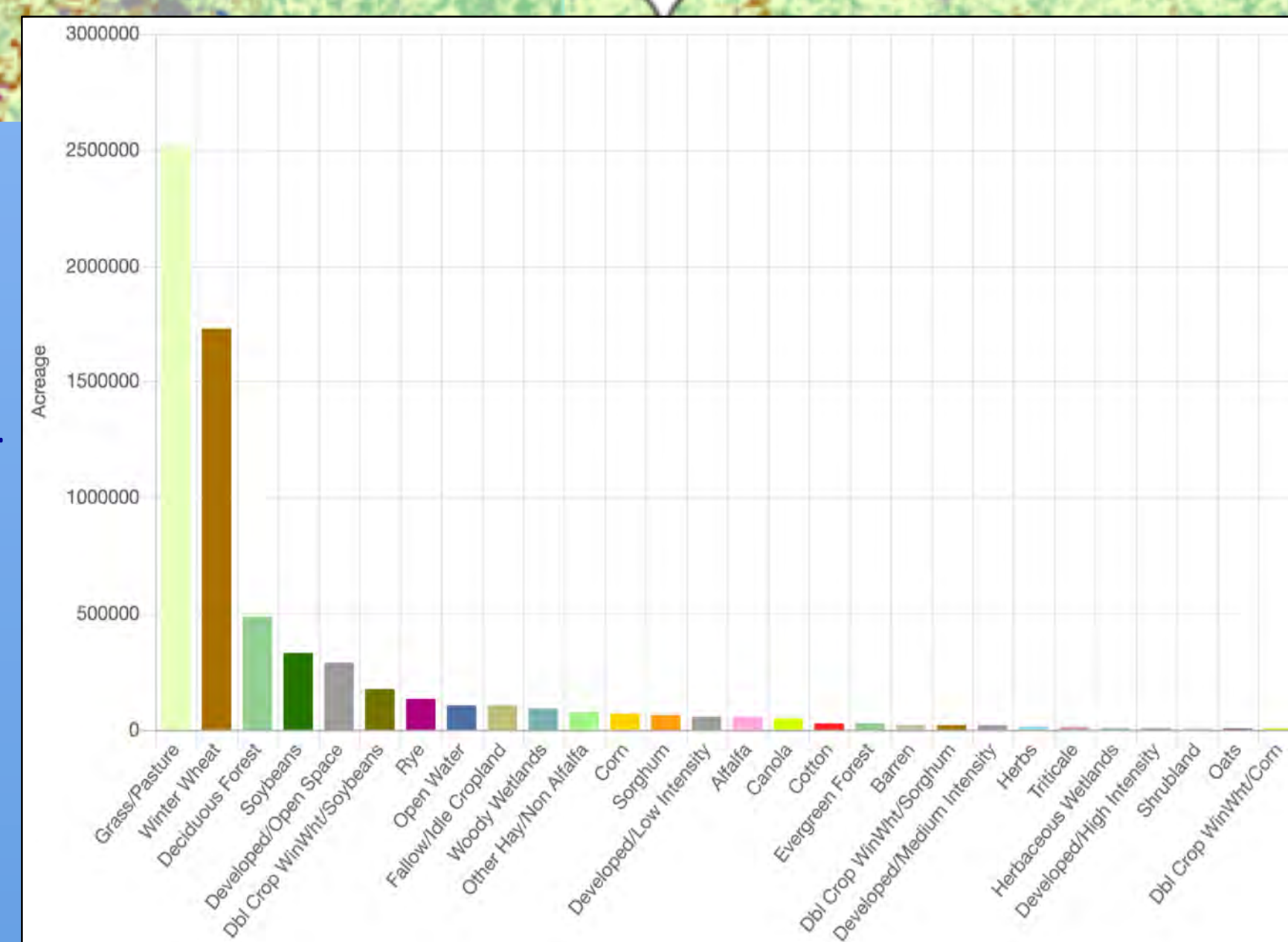


Current Field Campaigns:

- Orbiting CO Observatory-Fourier Transform Spectrometer Validation-PI: Gunson
- ARM Radiosondes for SNPP/JPSS Validation-PI: Borg
- Full-Column Greenhouse Sampling-PI: Sweeney
- Measuring Clouds at SGP with Stereo Photogrammetry-PI: Romps
- CLOUDMAP (UAS)-PI: Jacobs
- Cross-Scale Land Atmosphere Experiment-PI: Gentine
- Radiosonde Inter-comparison and Validation-PI: Borg
- Short Convection Campaign at SGP Central Facility-PI: Shapiro
- GNSS Ground Station-PI: Stuefer
- Low Cost Radio Meteorological Sensors-PI: Biraud
- MPD Network Demonstration-PI: Weckwerth
- PhenoCam Deployment-PI: Biraud

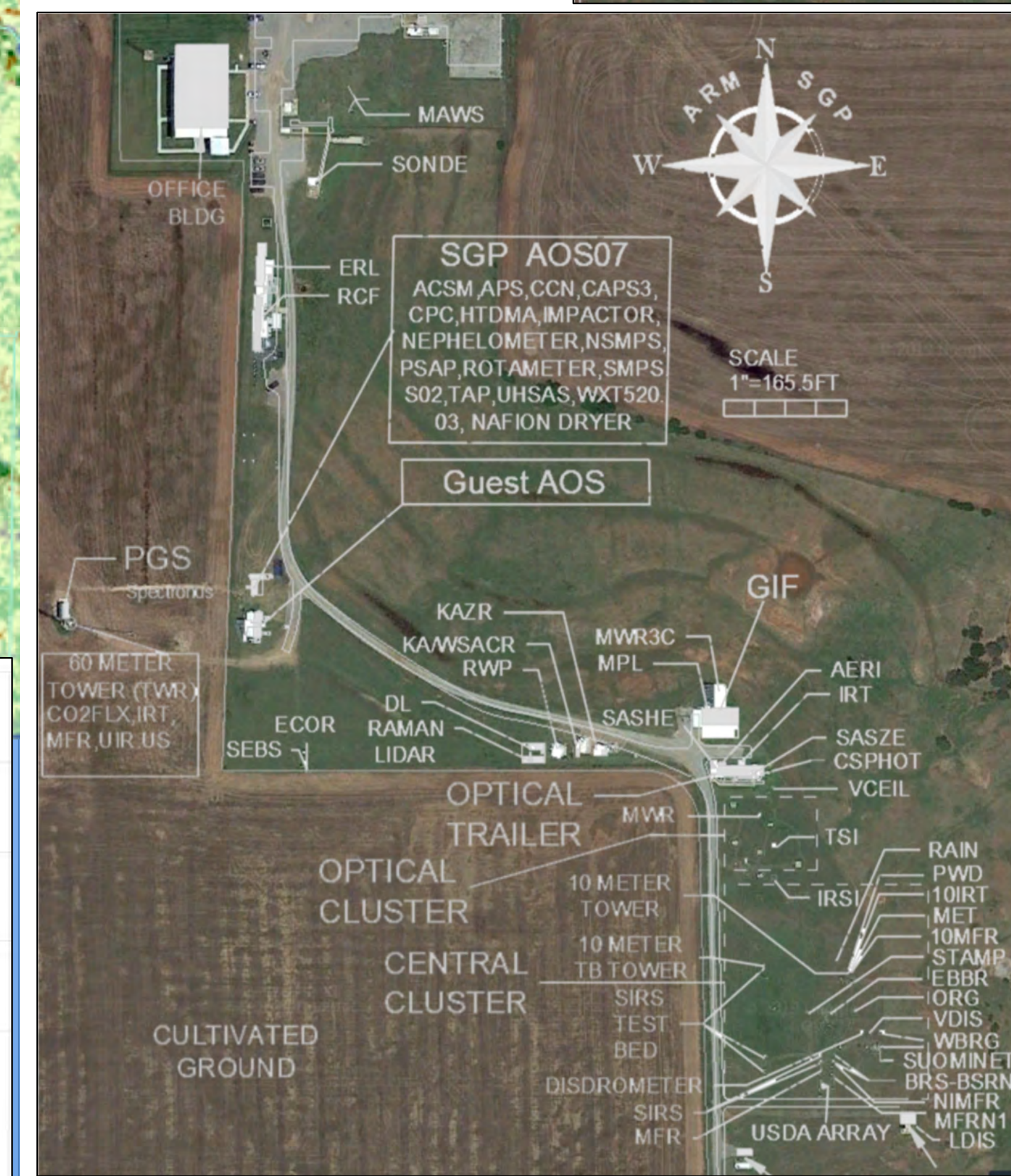
Upcoming Field Campaigns (2019):

- NWS Next Generation Sonde Evaluation-PI: Dover
- Small Particle Growth and Aging at SGP-PI: Collins
- POPsNet-PI: McComiskey
- Aerosol Ice Formation Closure Pilot Study-PI: Knopf
- Vertical Resolved NPF Study-PI: Kuang
- Examining Ice-Nucleating Particle Formation-PI: Hiranuma
- BTEM Low Altitude Test-PI: Grimm



Central Facility

- Main Office
- Electronics Repair Lab
- Radiometer Cal Facility
- Aerosol System (AOS07)
- Guest Aerosol Trailer
- 60M Tower
- Precision Gas System
- Radar Row
- Guest Instrument Facility
- Optical Trailer
- Optical Cluster
- Central Cluster
- 50 Pad (Testing Area)
- Shipping & Receiving (IDP4)



Instruments

More than 50 standard ARM instruments are located at the SGP CF. Numerous long-term and short-term guest instruments are on site at various times as part of Field Campaigns (IOPs). Campaigns are beginning or ending all the time so guest instruments on site are in a constant state of flux.

SGP Radars

- Dual-Wavelength (Ka/W) Scanning ARM Cloud Radars (CF)
- Vertically Pointing Ka-Band Radar (CF)
- X-Band Scanning ARM Precipitation Radar (I4, I5, I6)
- C-Band Scanning ARM Precipitation Radar (I7)

