



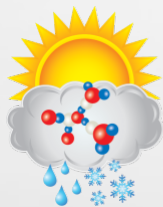
Office of
Science



Proudly Operated by **Battelle** Since 1965

Secondary Data Products to Be Developed

Jerome Fast

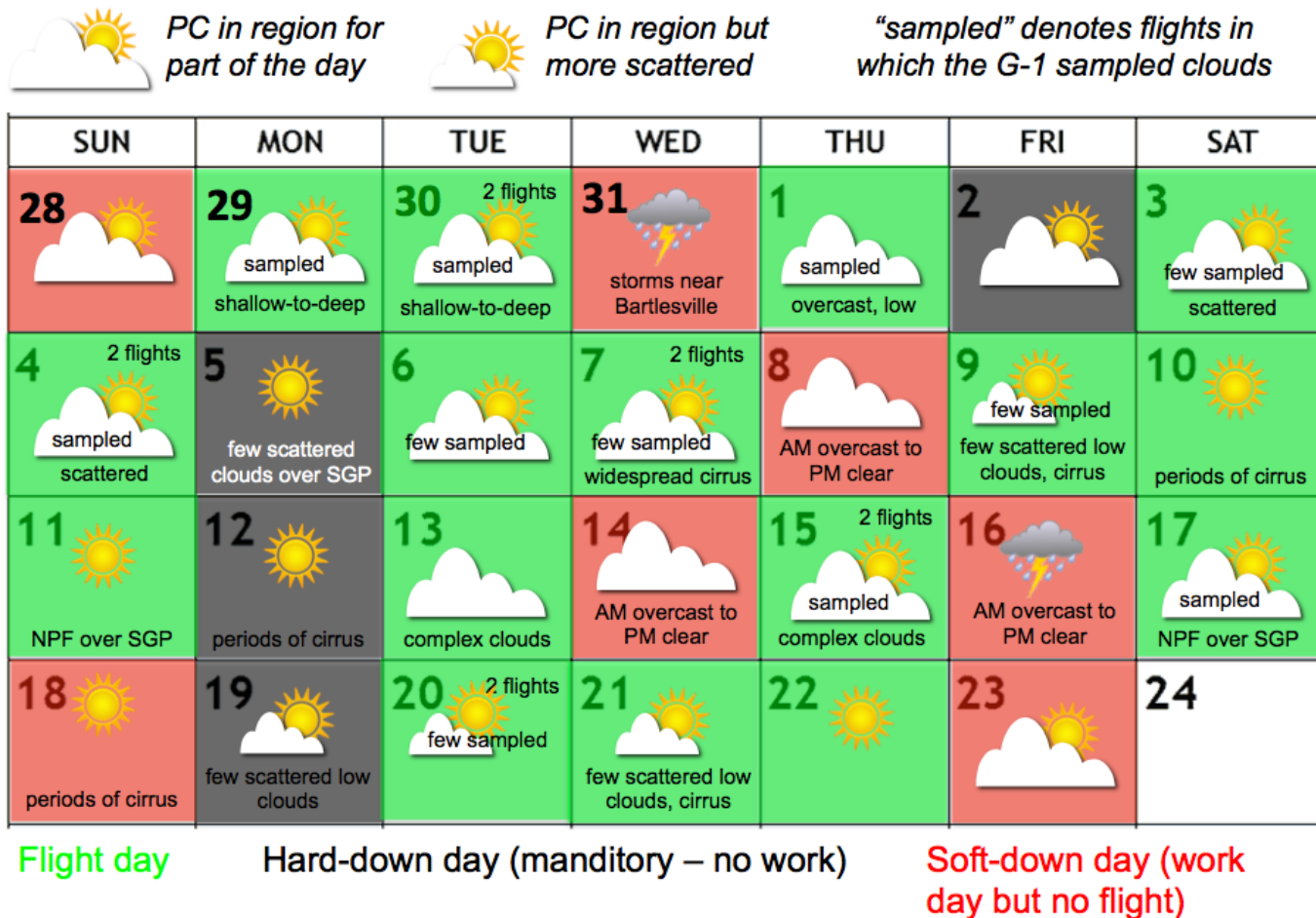


ASR
Atmospheric
System Research



Flight Journal (1)

- ▶ Preparing a summary of entire campaign as well as a flight-by-flight summary

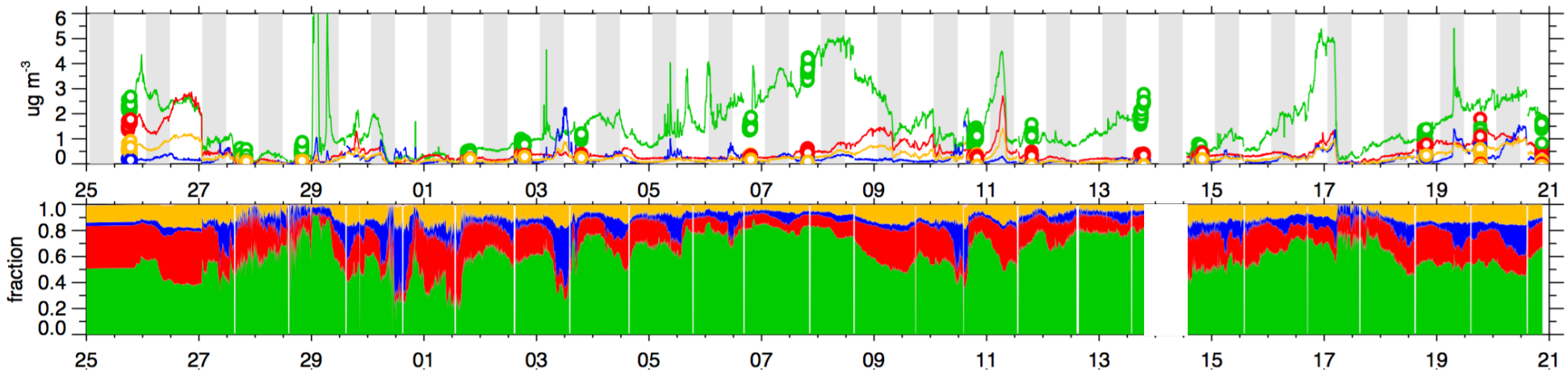


Merged G-1 Datasets

- ▶ Alyssa Matthews is working on providing additional merged data files
- ▶ While many variables are merged on a common time and space stamp, the guest instruments are not
- ▶ Checking cloud flags with aerosol data to determine if there are any “lags” associated with aerosol inlet, and then adjusting accordingly

Intercomparisons – Additional Sanity Checks

- ▶ Comparison surface and aircraft aerosol data where applicable



- ▶ Have completed G-1 and surface AMS comparisons for Phase 1, but need to expand to other comparisons (i.e. SPLAT II vs miniSPLAT, aerosol number and size, CCN, etc) and include Phase 2
- ▶ SMPS vs AMS, aerosol number from SPLAT vs other measurements
- ▶ These intercomparisons are important to assess the quality of the dataset

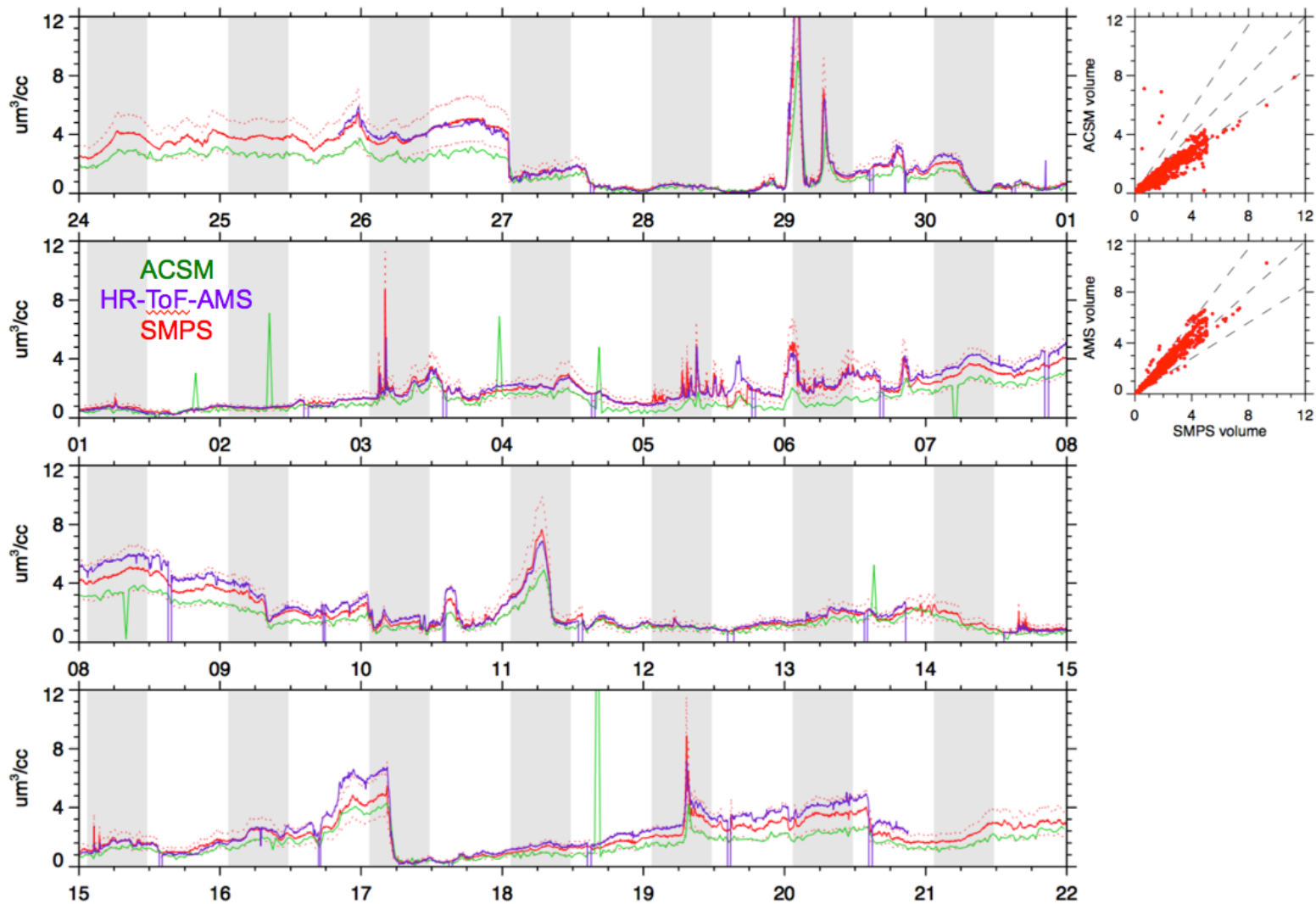
Intercomparisons – Additional Sanity Checks



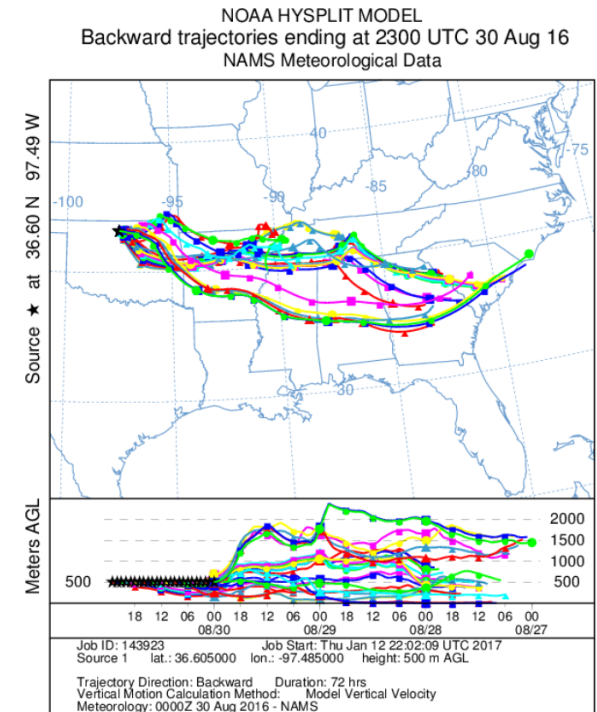
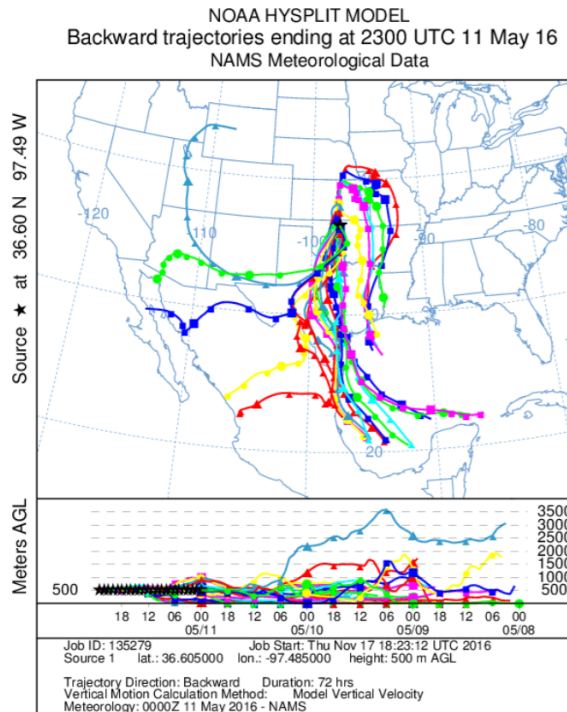
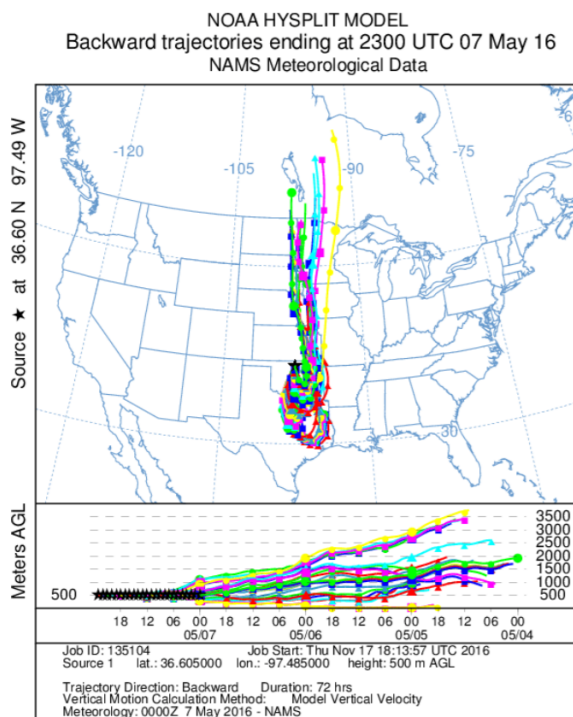
Pacific Northwest
NATIONAL LABORATORY

Proudly Operated by **Battelle** Since 1965

SGP site



- ▶ Jiumeng Liu has run back trajectories using the HYSPLIT model
- ▶ Trajectories originate from the SGP site every hour at the surface, 500 m, 1000 m and 2000 m
- ▶ Text files available upon request

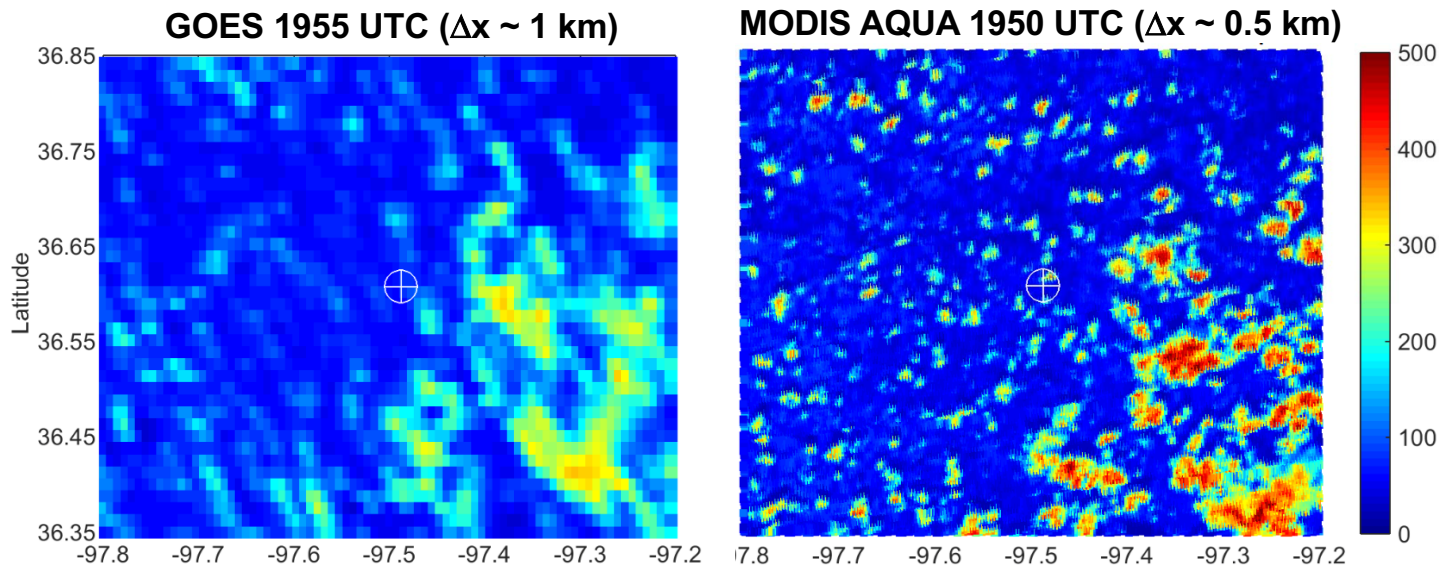


- ▶ Future: Trajectories along G-1 flight paths? Trajectories from higher-resolution WRF simulations once they are performed?

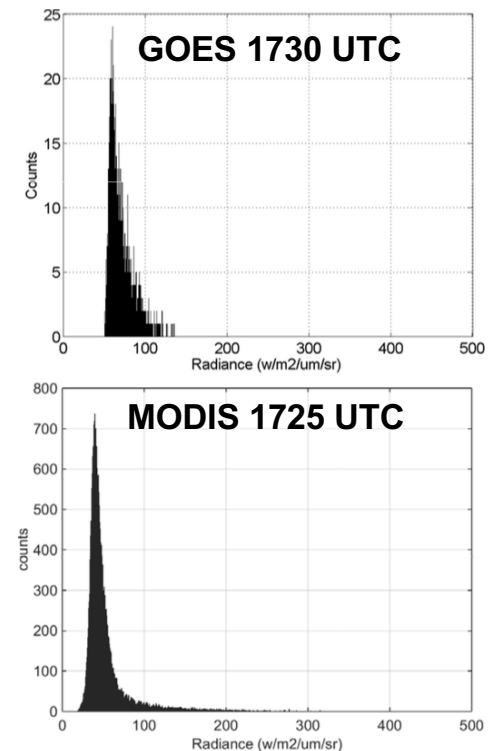
Satellite Cloud Analyses

- ▶ Zhe Feng and Duli Chand are exploring how to best use MODIS And GOES cloud products to supplement ARM measurements
- ▶ Cloud products useful to evaluate regional-scale predictions of cloud properties (PDFs of cloud fraction, brightness). Compare ARM point and spatial satellite data for evaluation of LES predictions.

August 30, 2016

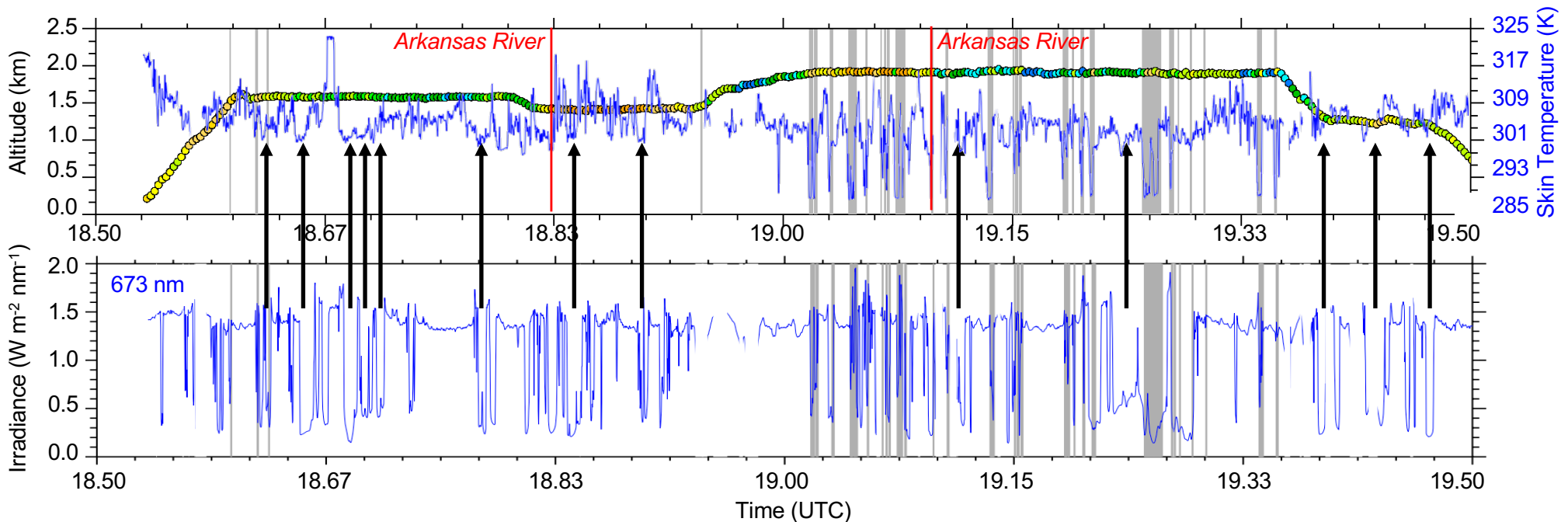


May 18, 2016



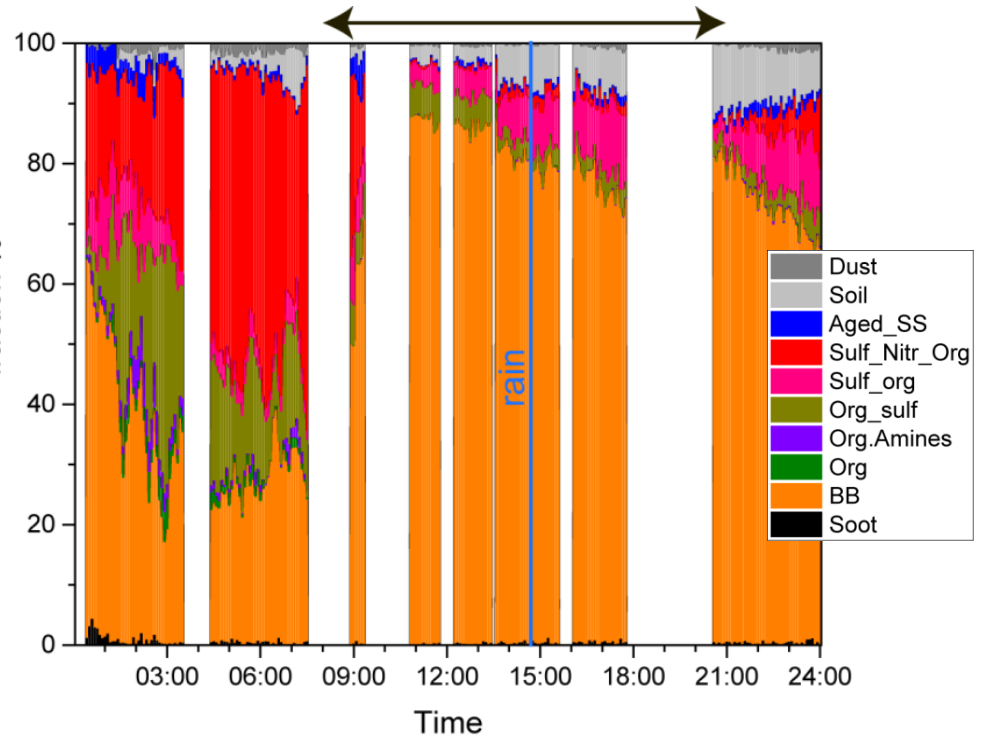
Other Cloud Flags

- ▶ Fan Mei has developed a cloud flag for the G-1 data to indicate when the aircraft is in cloud, but
- ▶ It would also be useful to indicate when the G-1 is just below cloud and/or shaded by clouds

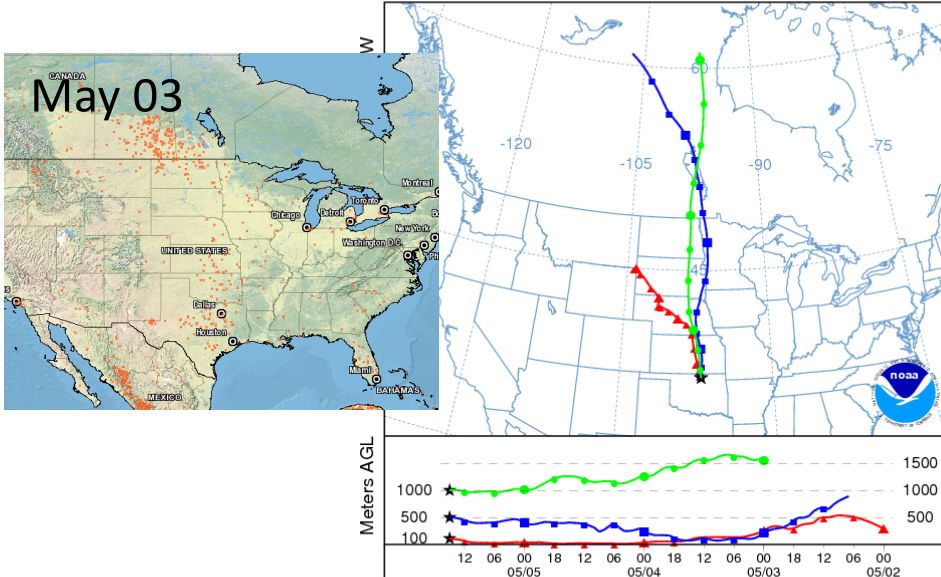


Secondary Products from Mass Spectrometers

- ▶ PMF, size distribution, O:C, etc. from HR-ToF-AMS
- ▶ Particle classes from SPLAT instruments. More detailed speciation? Other properties, such as morphology, volatility, viscosity.



Backward trajectories ending at 1500 UTC 05 May 16
 NAM Meteorological Data



Model Simulations

- ▶ Hierarchy of simulations
- ▶ ACME simulations over HI-SCALE period
- ▶ WRF simulations with $\Delta x = 9, 3, \text{ and } 1$ km simulations over south-central U.S over entire HI-SCALE period(s)
- ▶ LES simulations for select HI-SCALE flights, with and without chemistry