



SPLASH

Study of Precipitation, the Lower Atmosphere and Surface for Hydrometeorology

Surface Atmosphere Integrated Field Laboratory



SAIL

Radar Strategy for SPLASH and Synergy with SAIL

Rob Cifelli¹ and V. Chandrasekar²

¹ NOAA Physical Sciences Laboratory

² Cooperative Institute for Research in the Atmosphere (CIRA) and
Colorado State University

SPLASH Science *(Contributions from Scanning Radar Observations)*

Clouds and Precipitation:

- Quantitative Precipitation Estimation (QPE)
- Snow level and drivers
- Precipitation Microphysics
- Convective Initiation
- Rain-on-snow events

Surface Properties:

- Snow cover
- Sublimation of surface snow
- Surface Albedo
- Soil Moisture
- Surface-atmosphere exchange and impact on hydrology



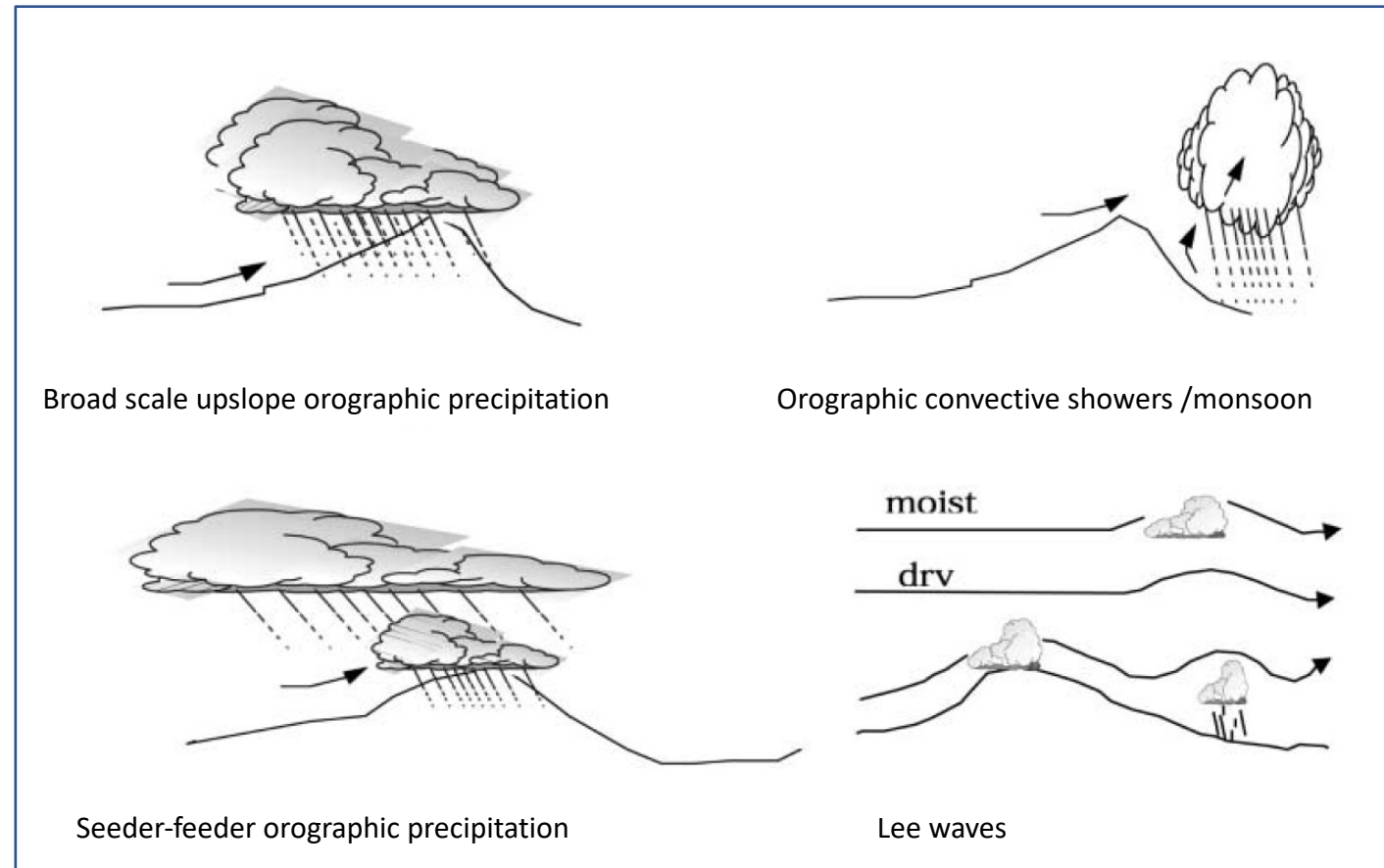
Mountain Weather:

- Orographic flows
- Diurnal circulations for renewable energy
- Boundary layer development

Improving Prediction:

- Seasonal evolution of snowpack in the NWM
- NWM forcing, including precipitation
- Seasonal streamflow biases
- Soil moisture variability
- Improving convective initiation with DA
- UFS-NWM coupling
- UFS/RRFS evaluation
- Gap-filling radars

What processes contribute to precipitation in the East River Valley and surrounding terrain?



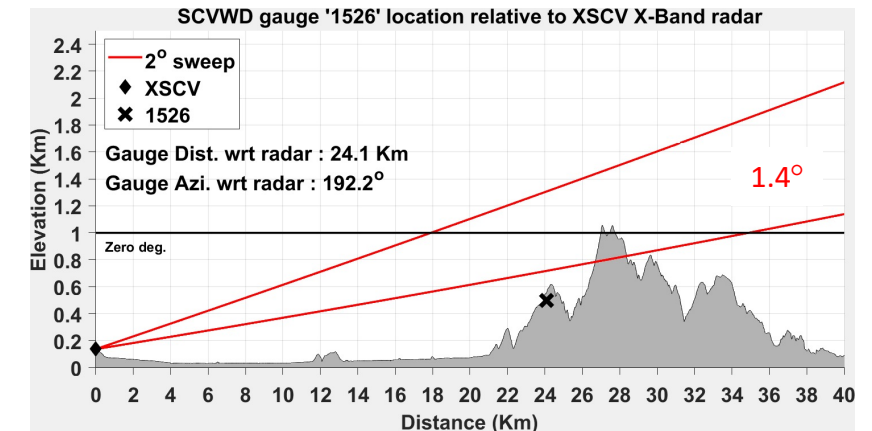
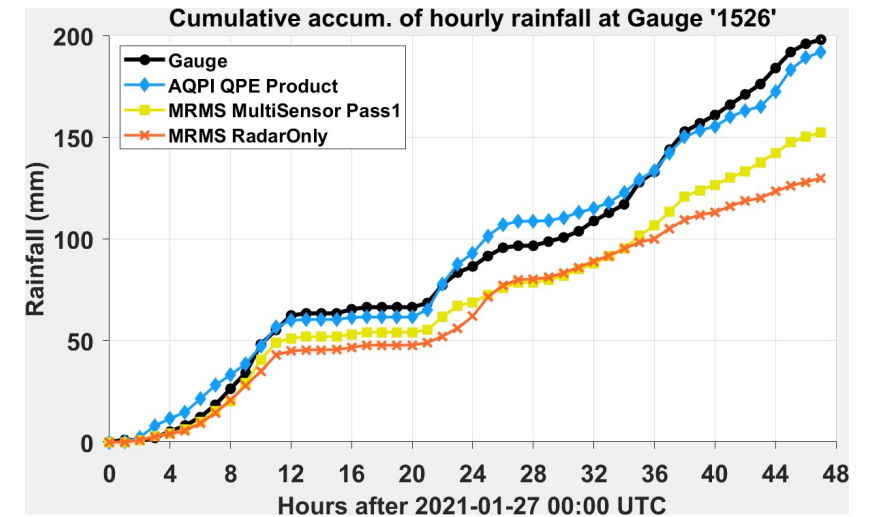
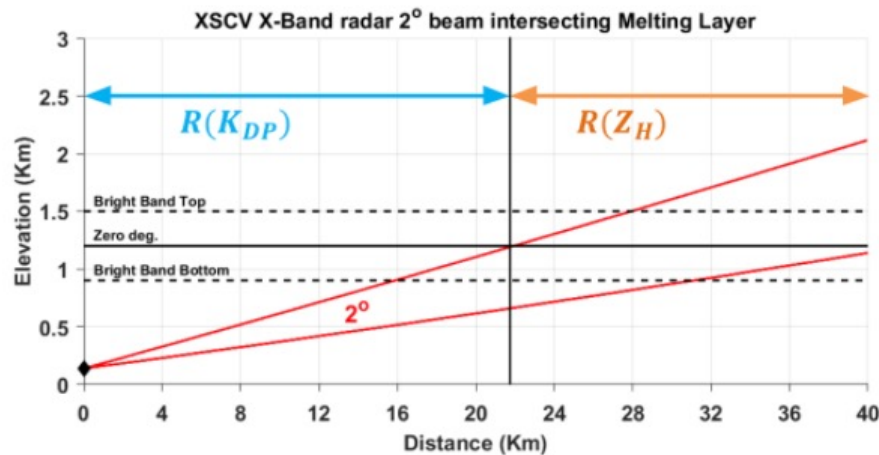
From Lee et al. 200

How much precipitation falls in the East River watershed?

Blended QPE Approach for SPLASH: liquid

Radar Rainfall Estimation in Low Melting Layer

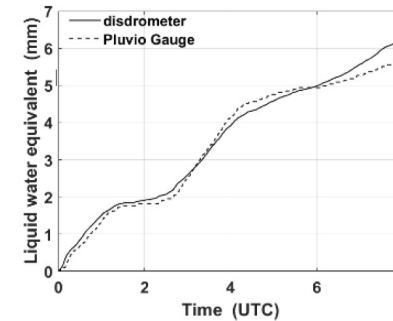
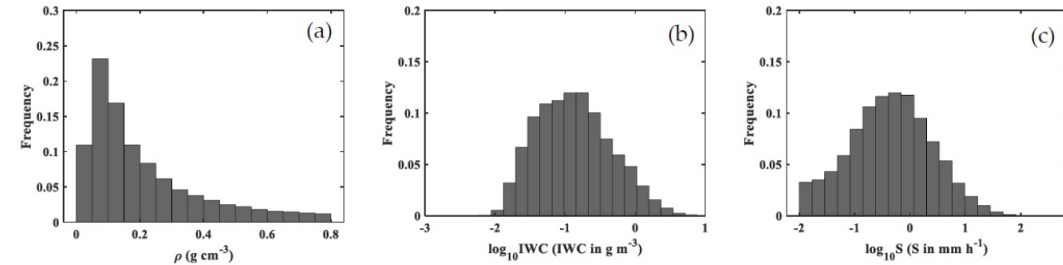
- The X-Band only QPE is blending of R-KDP and R-Z (with VPR correction applied)



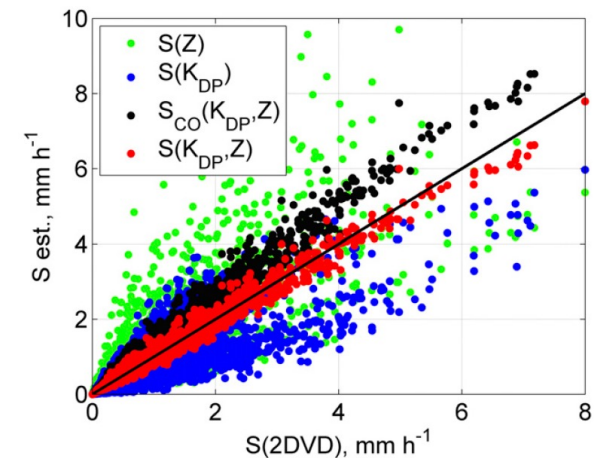
SPLASH Snow QPE Approach

- Liquid QPE in orographic terrain is hard
- Solid QPE in orographic terrain is way harder
 - variable density
- For SPLASH use disdrometer data to retrieve density
 - Follow approach of Yu et al 2020
- QPE approach: $S(K_{dp}, Z_H) = A * K_{dp}^B * Z_H^C$
- Explore other approaches as well

$$\rho_s = \frac{3\rho_0 v^2 C_D}{4gD}$$

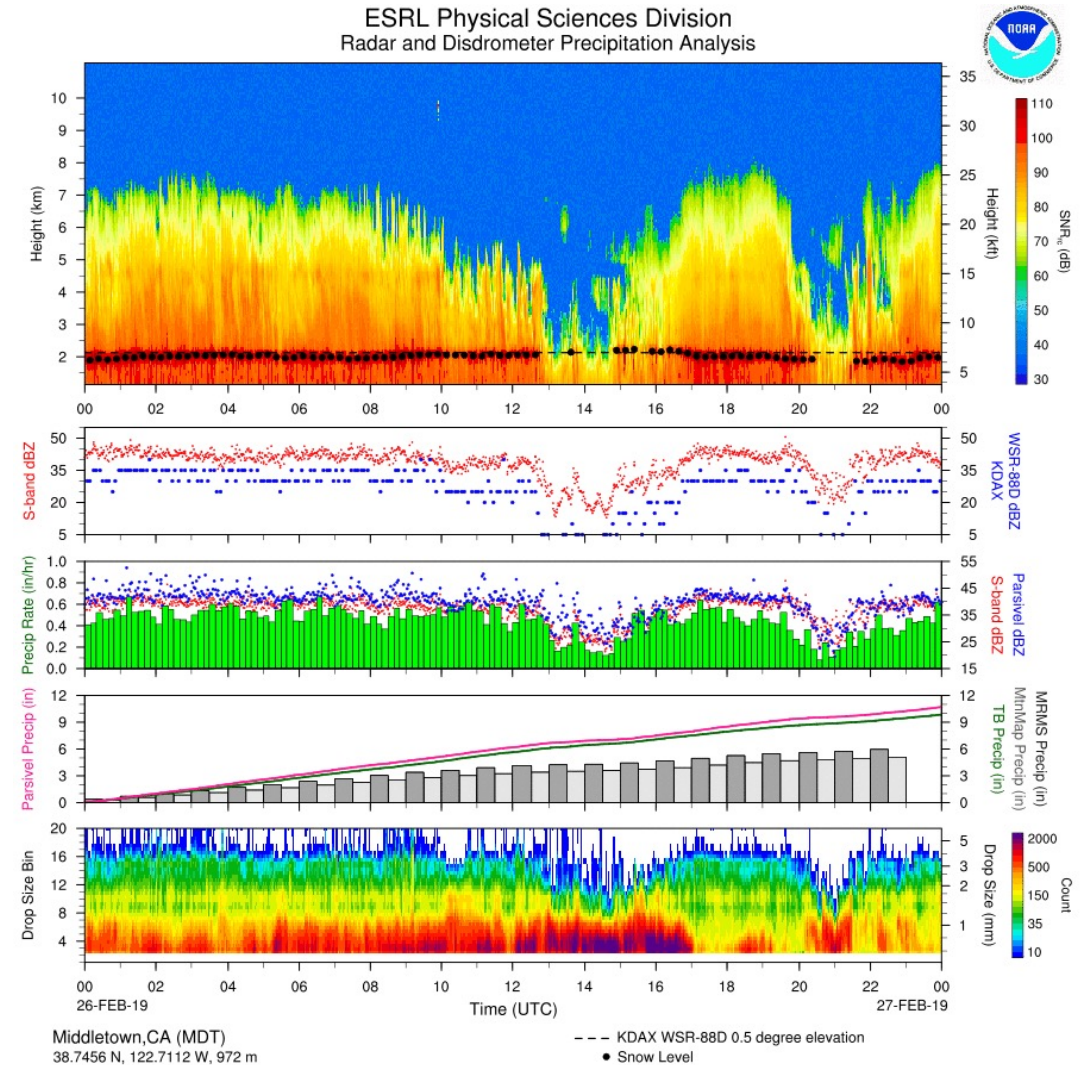


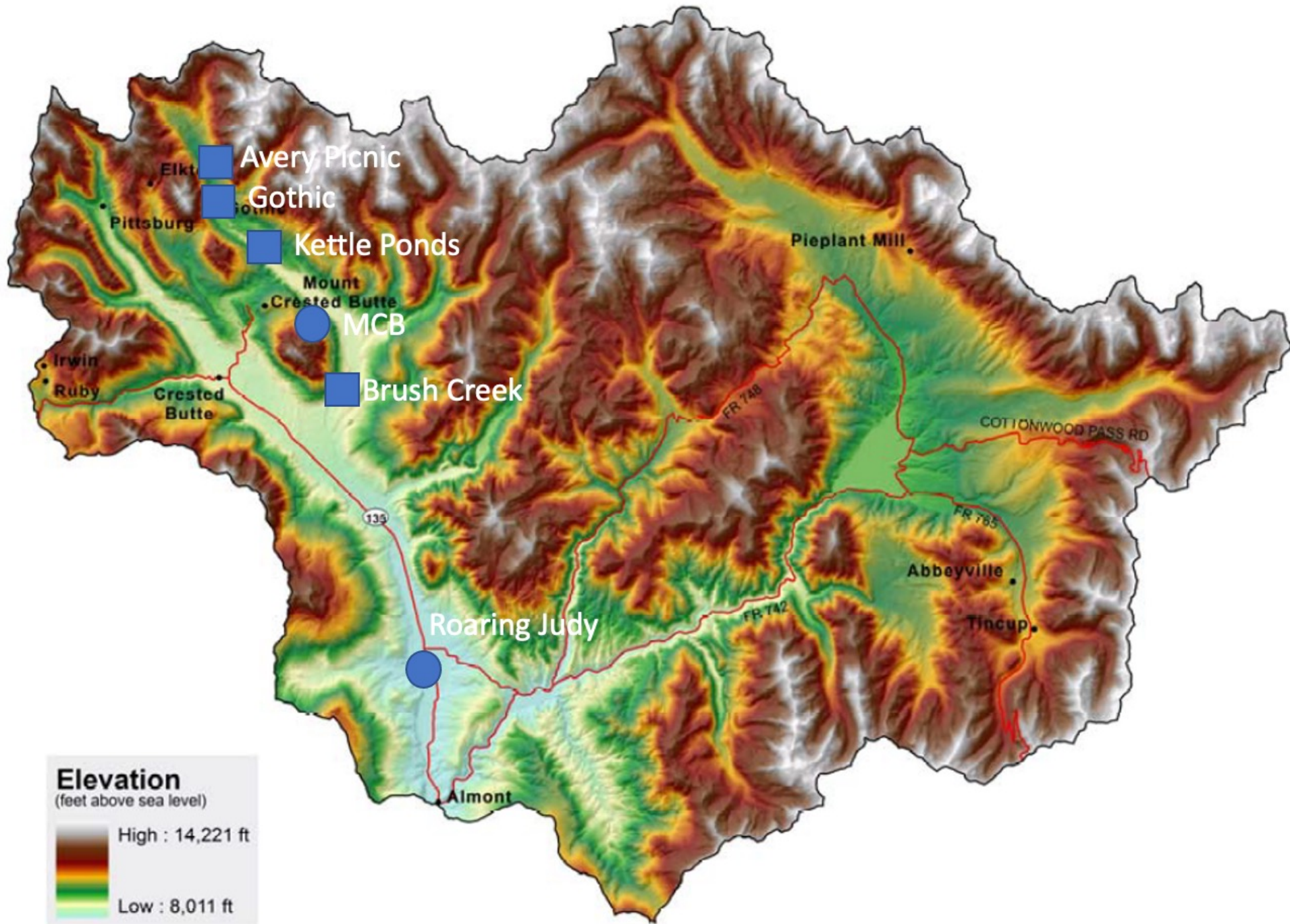
From Yu et al 2020



From Bukovcic et al. 2018

Critical Ancillary Measurements for QPE





SPLASH/ SAIL radar deployment overview

General Information

- **Old Teocalli Low Site:**

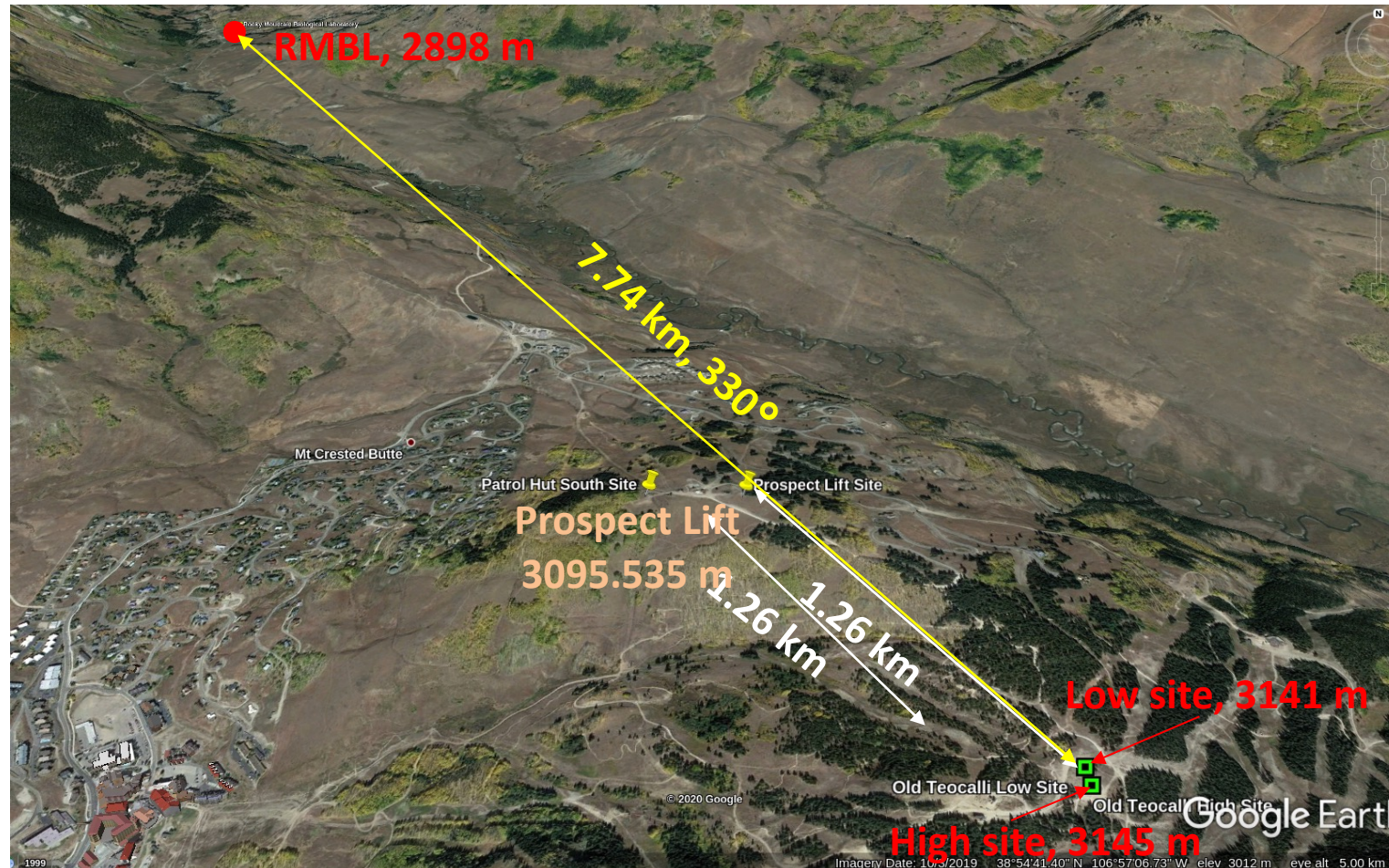
Latitude: 38.898367 °N.
Longitude: 106.9432056 °W
Altitude: 3141 m

- **Old Teocalli High Site:**

Latitude: 38.897934 °N.
Longitude: 106.9432083 °W
Altitude: 3145 m

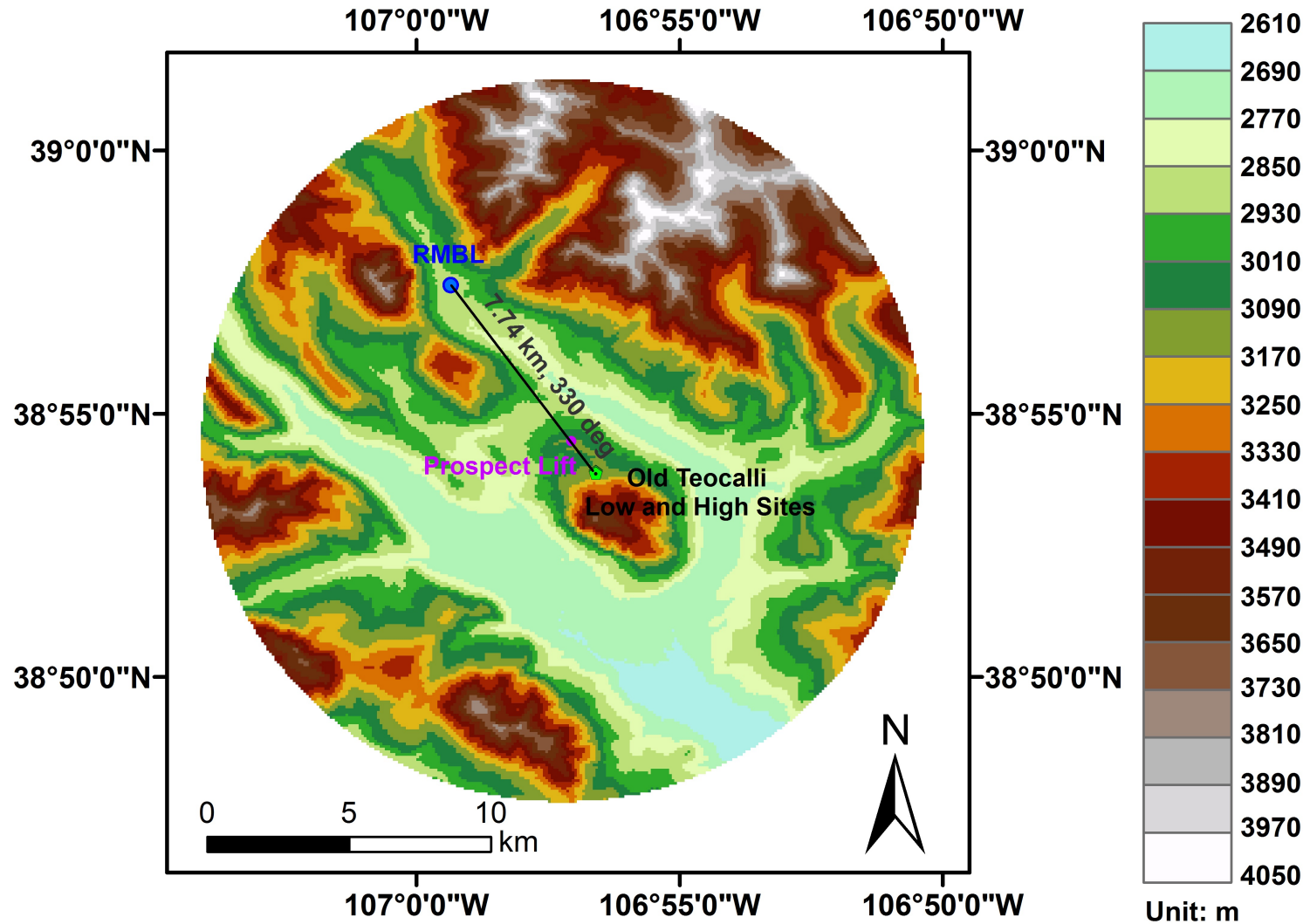
- **RMBL:**

Latitude: 38.9585639 °N.
Longitude: 106.987761 °W
Altitude: 2898 m



RMBL: Rocky Mountain Biological Lab (38°57'30.83"N, 106°59'15.94"W, 2898 m)

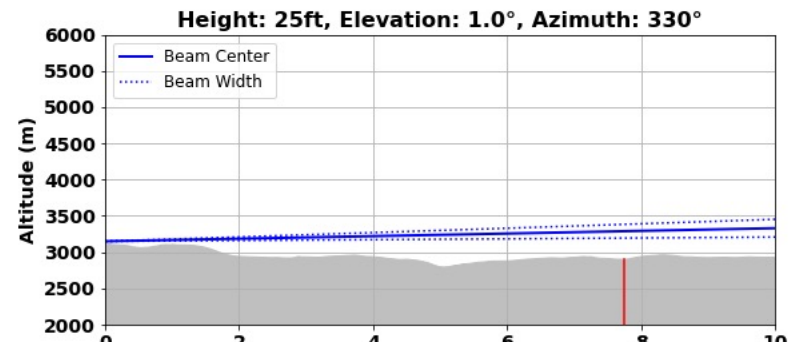
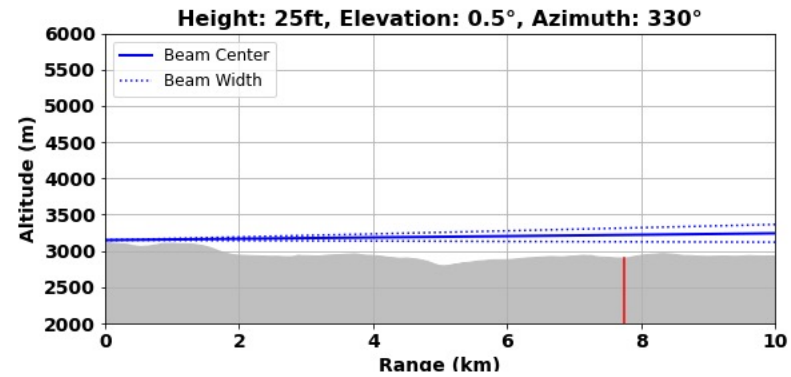
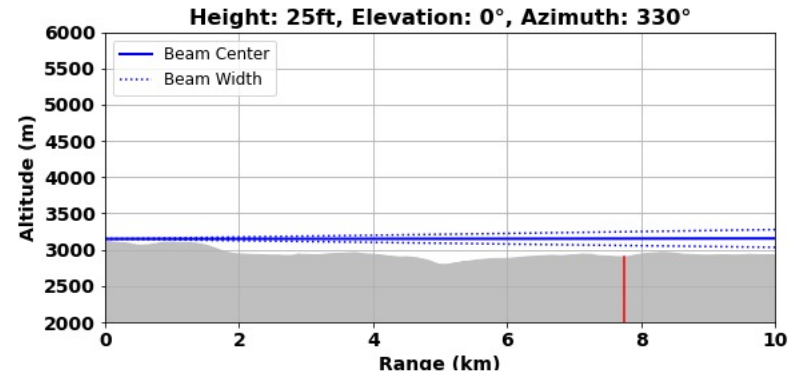
Common for all sites: 10 km radius



Old Teocalli Lift: Ray Profile

Radar Tower Height: 25 ft, Azimuth: 330°

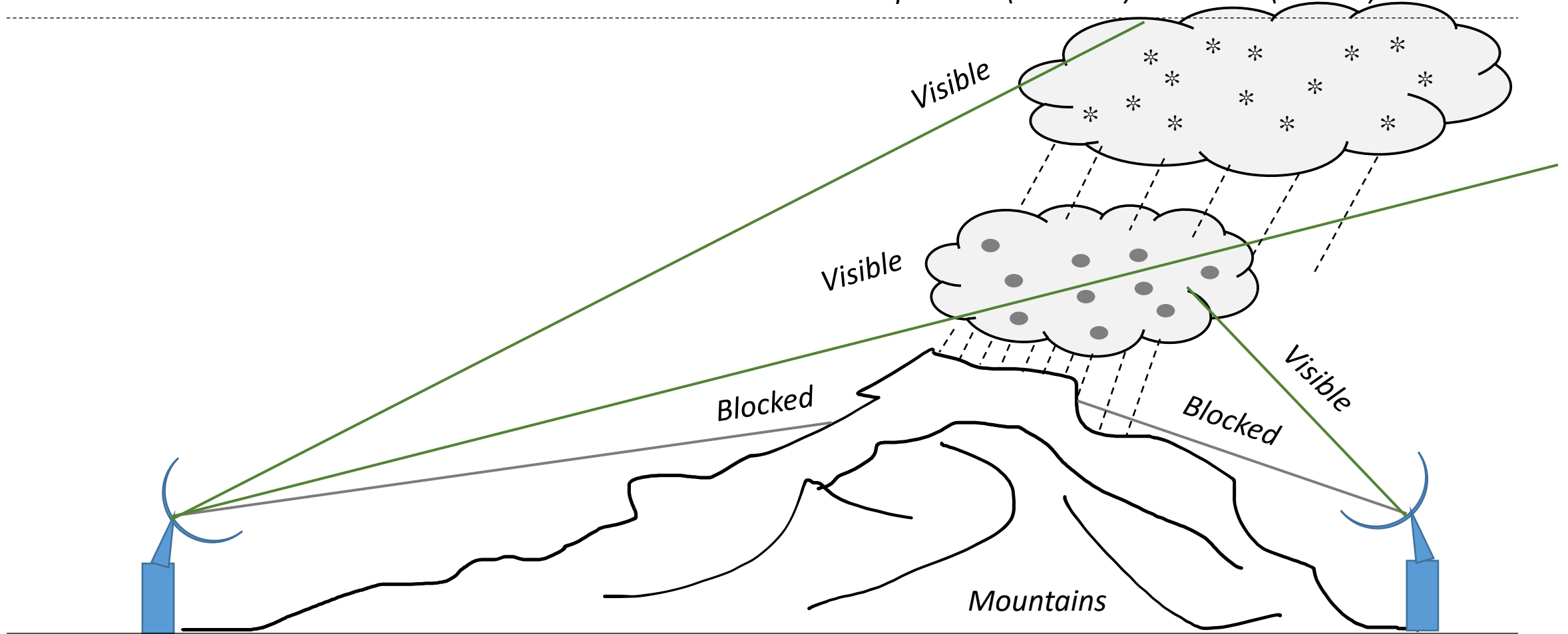
(a) Low Site



Red line: RMBL: 7.74 km, 330°

Cartoon of two radar observations with terrain in between

Storm top 10 km (Summer) or 5.5 km (Winter)



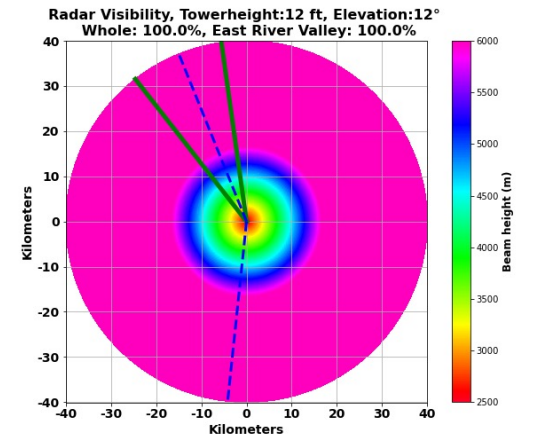
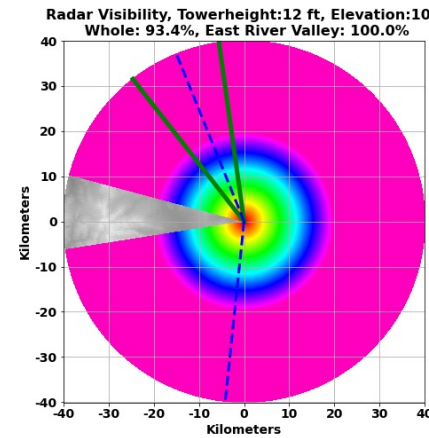
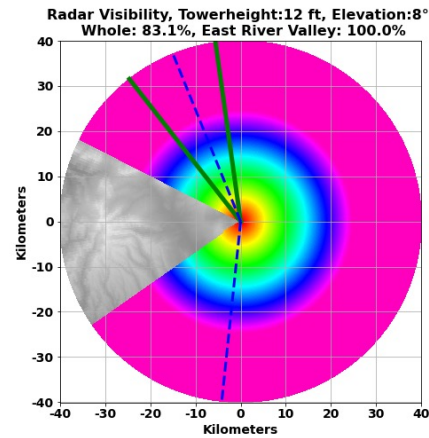
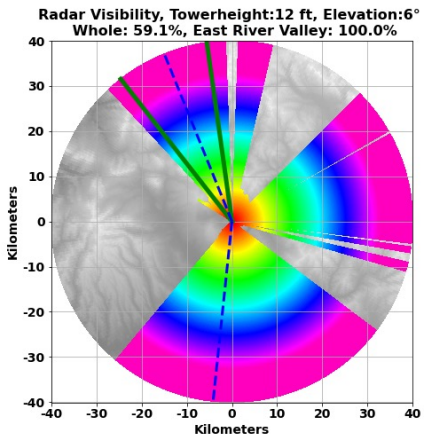
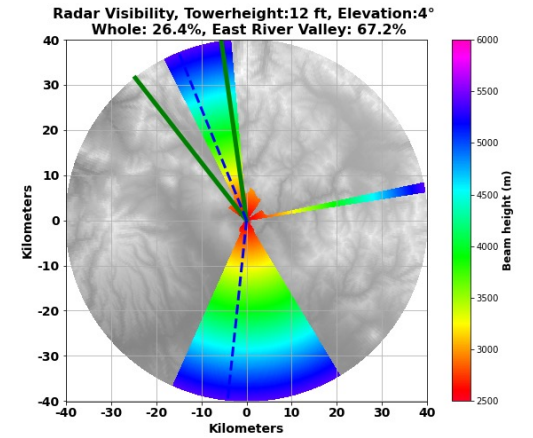
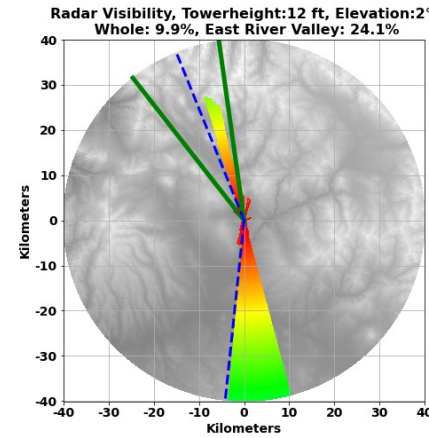
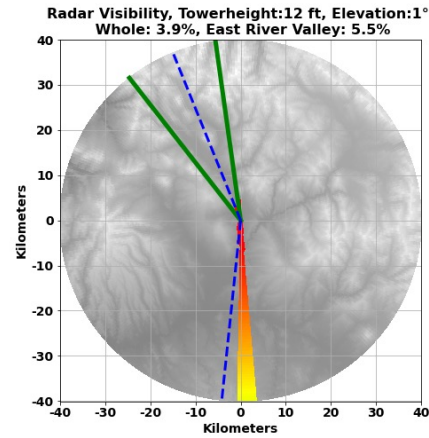
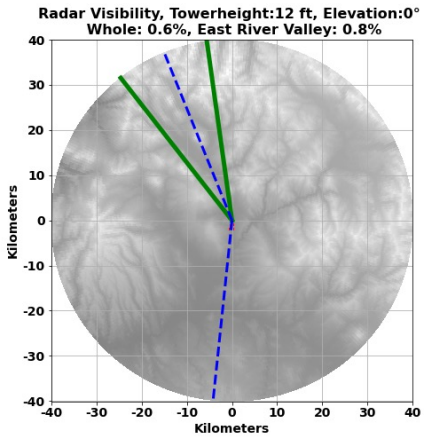
Radar height: 12 ft

Elevation: 0°, 1.0°, 2.0°, 4.0°, 6.0°, 8.0°, 10.0°, 12.0°

Azimuth: 338°

Radar Visibility with vegetation (40km radius)

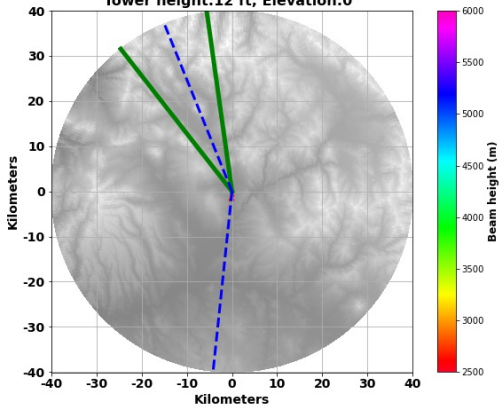
Radar Tower Height: 12 ft, Elevation: 0° , 1.0° , 2.0° , 4.0° , 6.0° , 8.0° , 10.0° , 12.0°



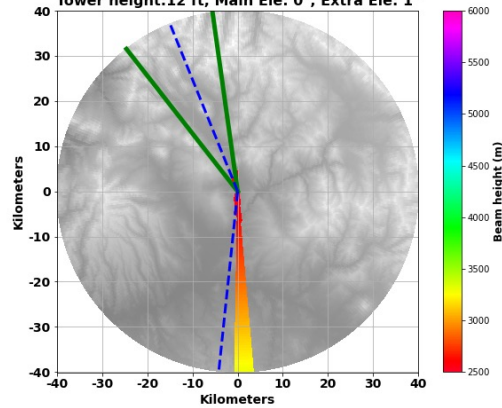
Radar Visibility with Tree height (40km radius), Summer Season

Radar Tower Height: 12 ft, Elevation: 0°, 1.0°, 2.0°, 4.0°, 6.0°, 8.0°, 10.0°, 12.0°

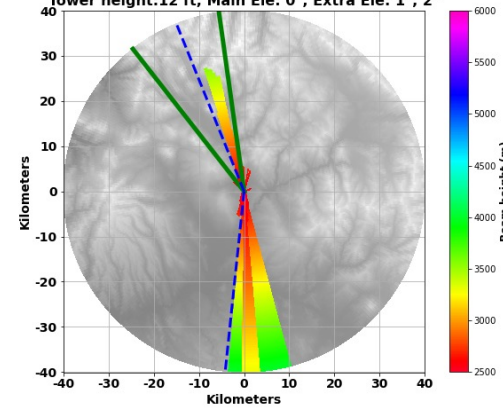
Radar Visibility: Whole [0.6%], East River Valley [0.8%]
Tower height:12 ft, Elevation:0°



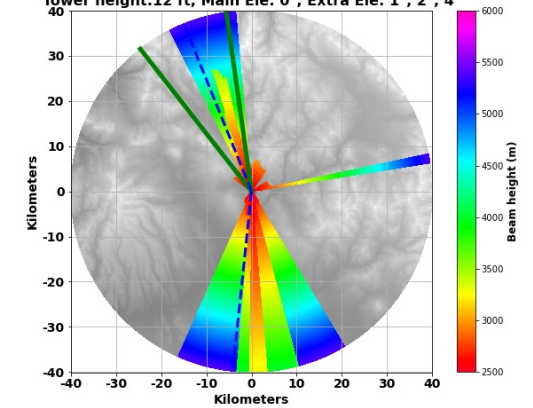
Radar Visibility: Whole [3.9%], East River Valley [5.5%]
Tower height:12 ft, Main Ele: 0°, Extra Ele: 1°



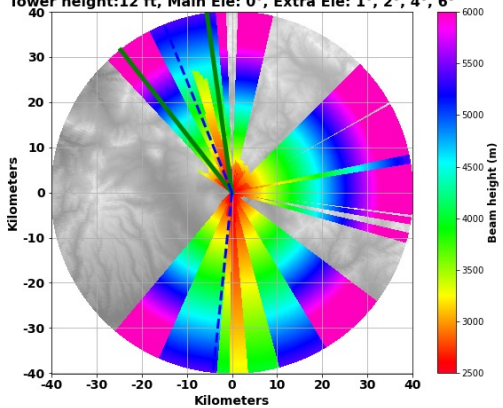
Radar Visibility: Whole [9.9%], East River Valley [24.1%]
Tower height:12 ft, Main Ele: 0°, Extra Ele: 1°, 2°



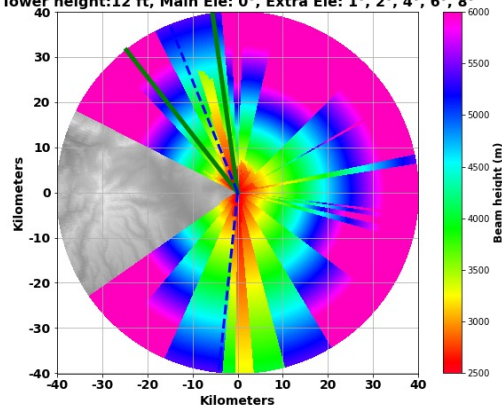
Radar Visibility: Whole [26.4%], East River Valley [67.2%]
Tower height:12 ft, Main Ele: 0°, Extra Ele: 1°, 2°, 4°



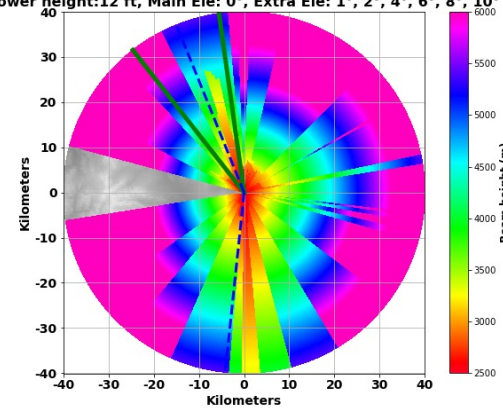
Radar Visibility: Whole [59.1%], East River Valley [100.0%]
Tower height:12 ft, Main Ele: 0°, Extra Ele: 1°, 2°, 4°, 6°



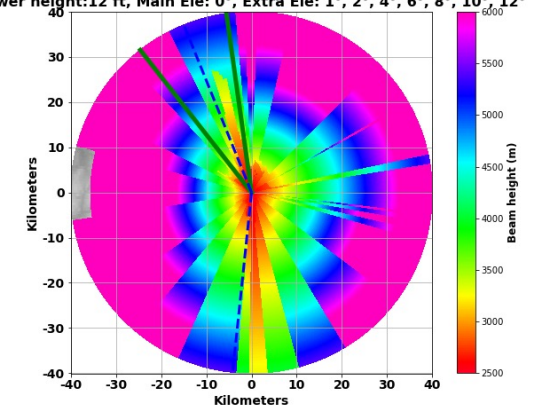
Radar Visibility: Whole [83.1%], East River Valley [100.0%]
Tower height:12 ft, Main Ele: 0°, Extra Ele: 1°, 2°, 4°, 6°, 8°



Radar Visibility: Whole [93.4%], East River Valley [100.0%]
Tower height:12 ft, Main Ele: 0°, Extra Ele: 1°, 2°, 4°, 6°, 8°, 10°



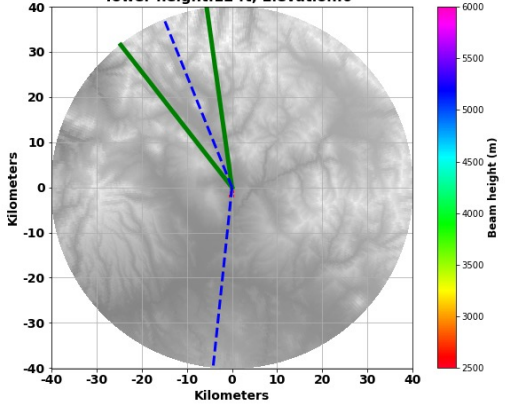
Radar Visibility: Whole [99.3%], East River Valley [100.0%]
Tower height:12 ft, Main Ele: 0°, Extra Ele: 1°, 2°, 4°, 6°, 8°, 10°, 12°



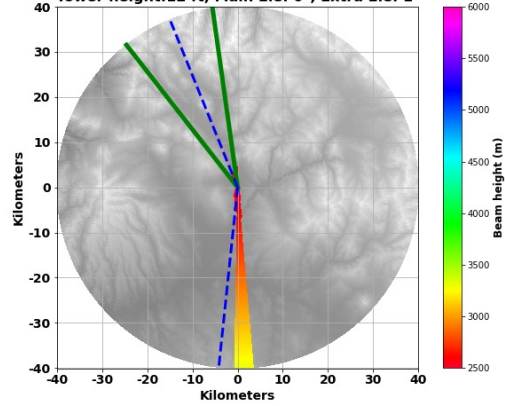
Radar Visibility with Tree height (40km radius), Winter Season

Radar Tower Height: 12 ft, Elevation: 0°, 1.0°, 2.0°, 4.0°, 6.0°, 8.0°, 10.0°, 12.0°

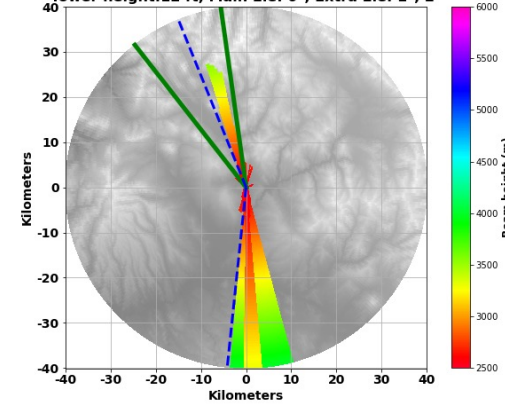
Radar Visibility: Whole [0.6%], East River Valley [0.8%]
Tower height:12 ft, Elevation:0°



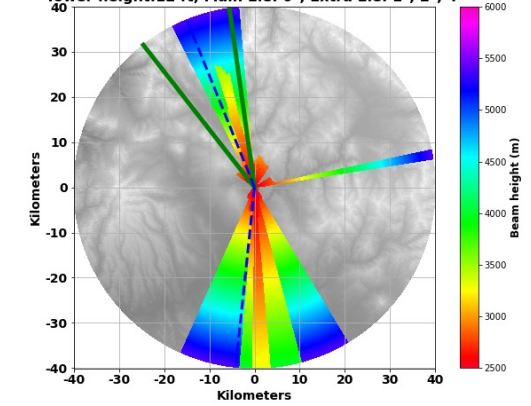
Radar Visibility: Whole [3.9%], East River Valley [5.5%]
Tower height:12 ft, Main Ele: 0°, Extra Ele: 1°



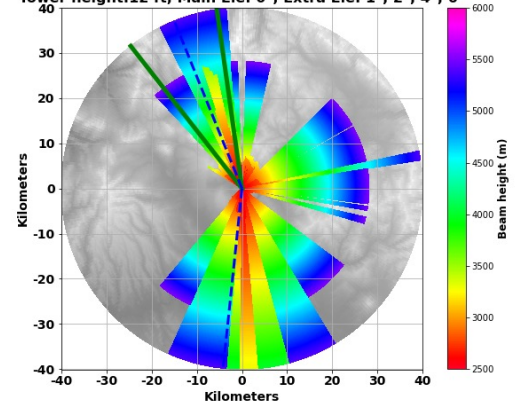
Radar Visibility: Whole [9.9%], East River Valley [24.1%]
Tower height:12 ft, Main Ele: 0°, Extra Ele: 1°, 2°



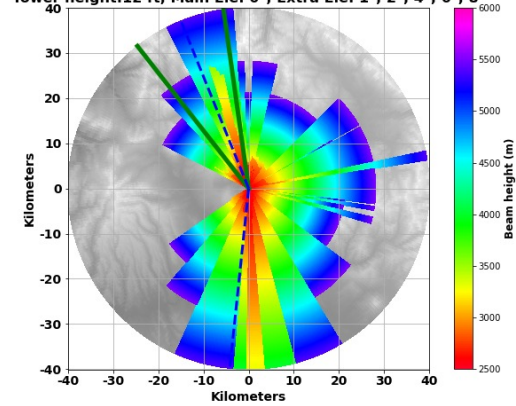
Radar Visibility: Whole [26.4%], East River Valley [67.2%]
Tower height:12 ft, Main Ele: 0°, Extra Ele: 1°, 2°, 4°



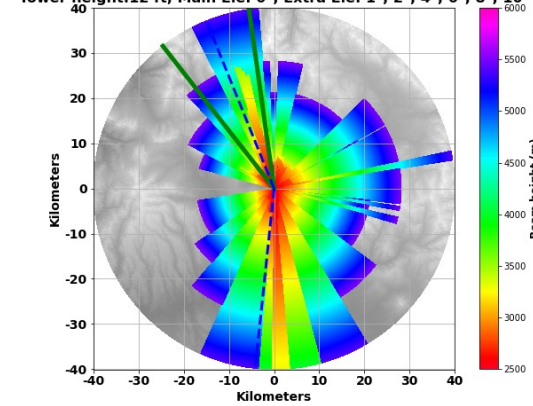
Radar Visibility: Whole [49.1%], East River Valley [89.1%]
Tower height:12 ft, Main Ele: 0°, Extra Ele: 1°, 2°, 4°, 6°



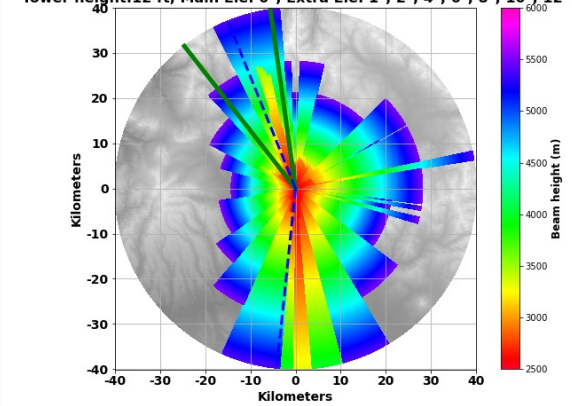
Radar Visibility: Whole [60.6%], East River Valley [89.1%]
Tower height:12 ft, Main Ele: 0°, Extra Ele: 1°, 2°, 4°, 6°, 8°



Radar Visibility: Whole [64.8%], East River Valley [89.1%]
Tower height:12 ft, Main Ele: 0°, Extra Ele: 1°, 2°, 4°, 6°, 8°, 10°

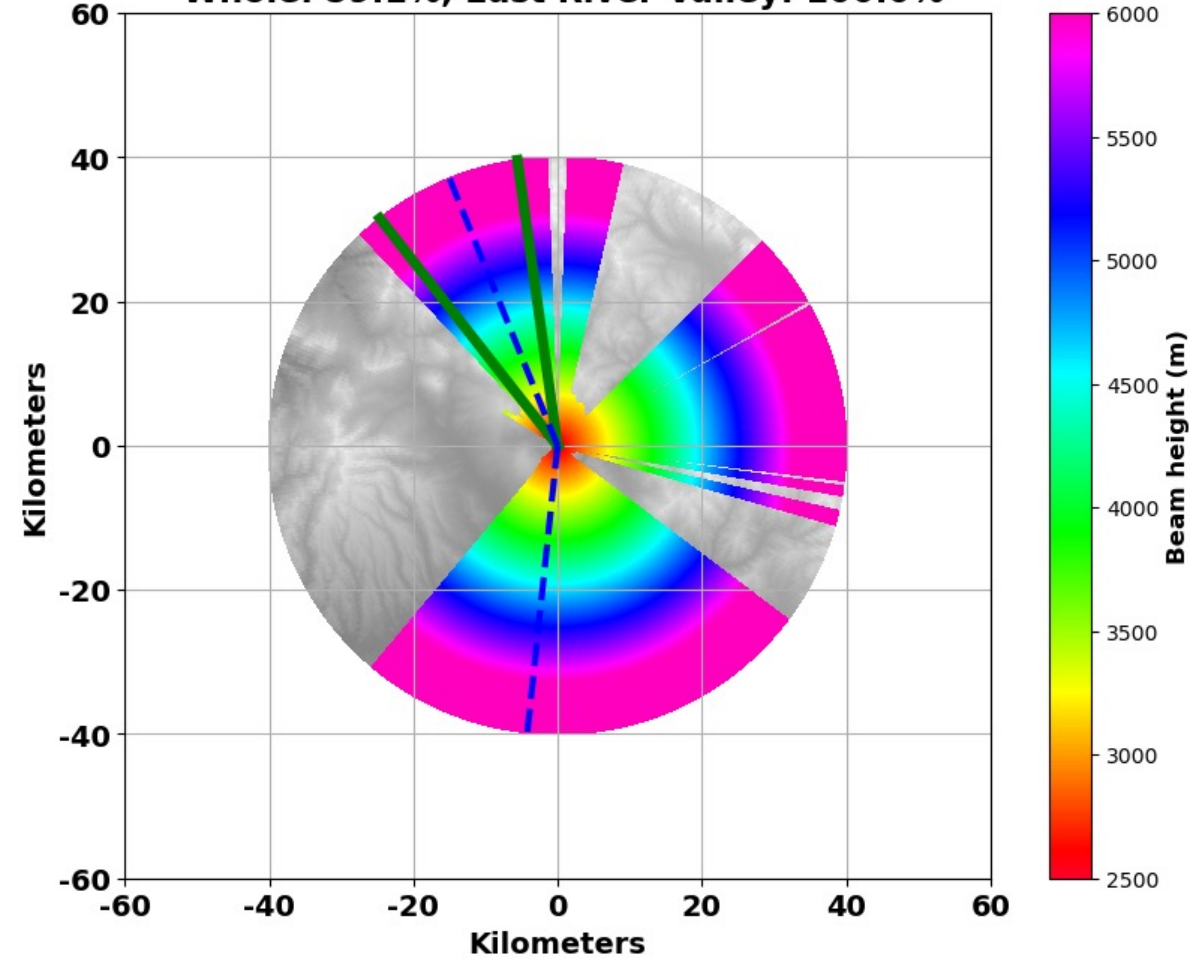


Radar Visibility: Whole [67.1%], East River Valley [89.1%]
Tower height:12 ft, Main Ele: 0°, Extra Ele: 1°, 2°, 4°, 6°, 8°, 10°, 12°



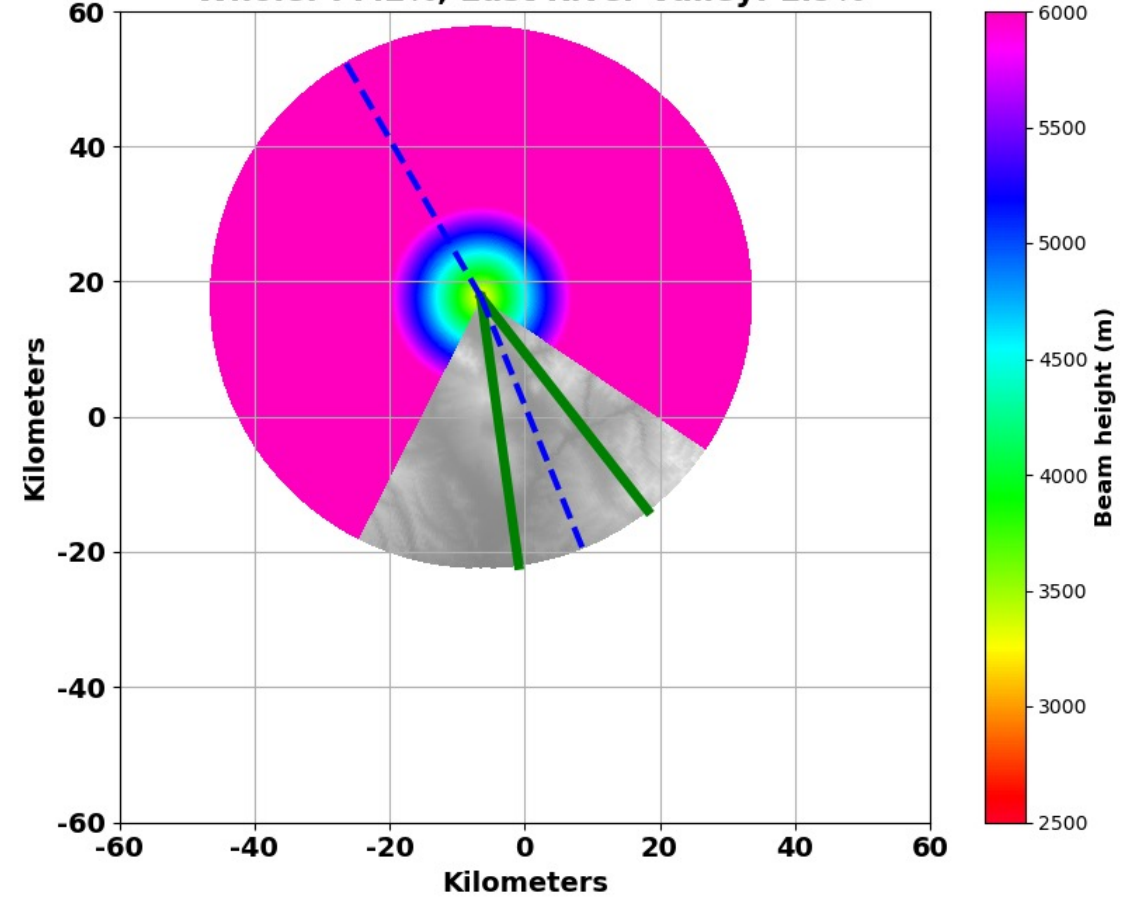
SPLASH Radar, 12 ft, Elevation: 6°

Radar Visibility, Towerheight:12 ft, Elevation:6°
Whole: 59.1%, East River Valley: 100.0%



SAIL Radar, 12 ft, Elevation: 12°

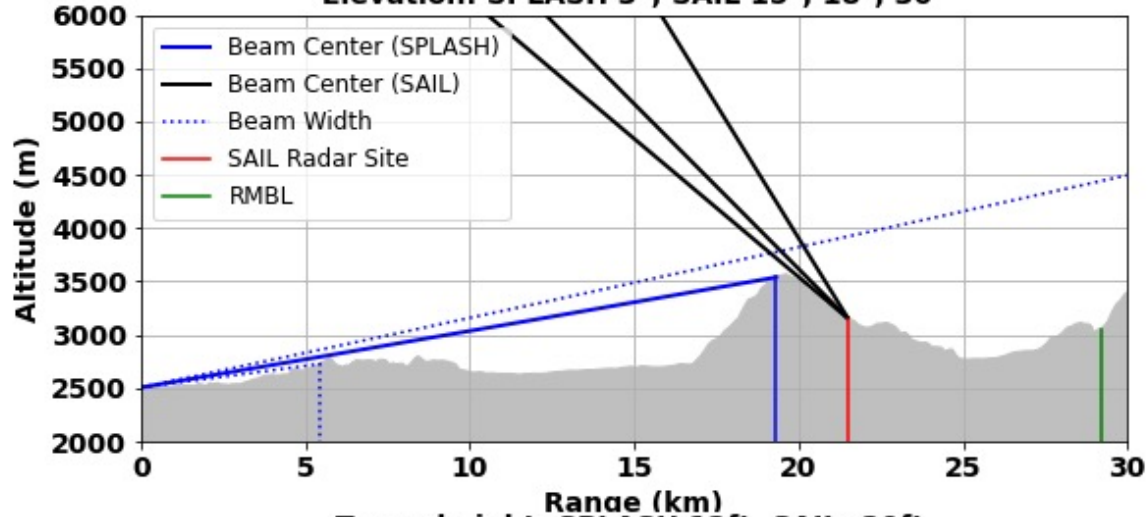
Radar Visibility, Towerheight:12 ft, Elevation:12°
Whole: 77.2%, East River Valley: 1.9%



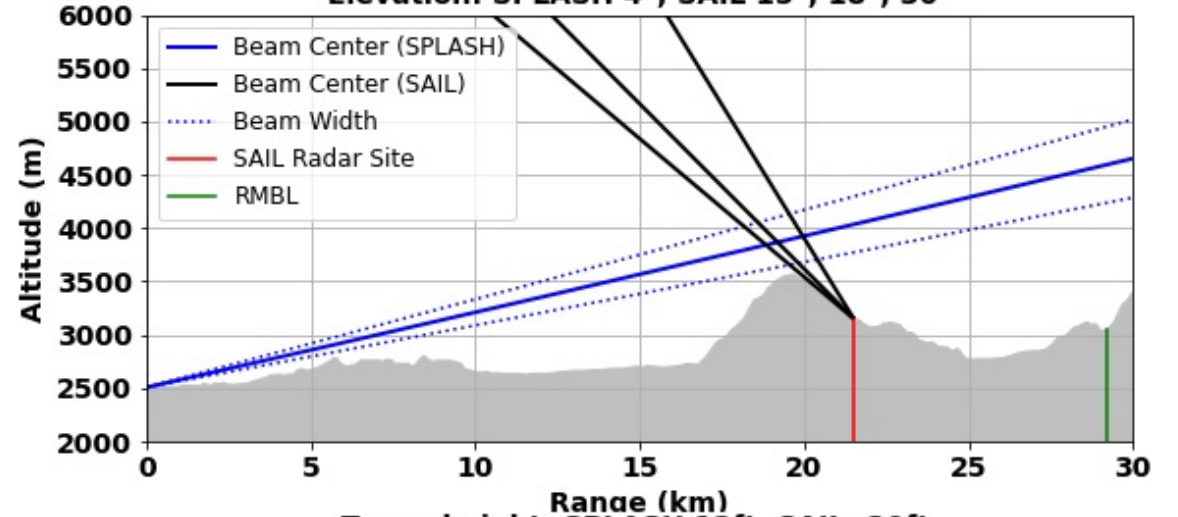
Radar Tower Height: SPLASH radar (12 ft), SAIL radar (20 ft)

Elevation: **SPLASH** 3°, 4°, 5°, 6.0°, **SAIL**: 15°, 18°, 30°

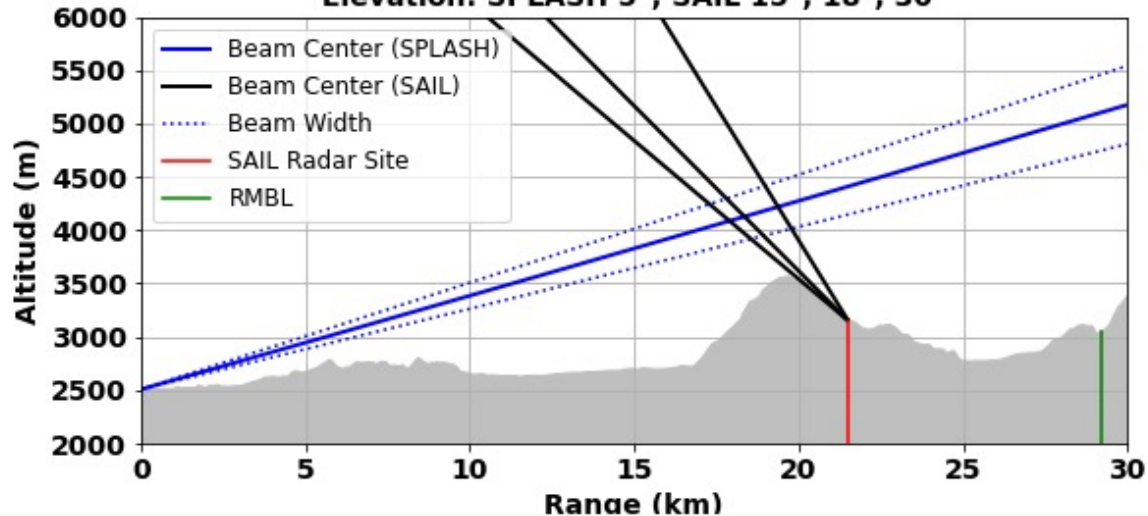
Tower height: SPLASH 12ft, SAIL: 20ft
Elevation: SPLASH 3°; SAIL 15°, 18°, 30°



Tower height: SPLASH 12ft, SAIL: 20ft
Elevation: SPLASH 4°; SAIL 15°, 18°, 30°



Tower height: SPLASH 12ft, SAIL: 20ft
Elevation: SPLASH 5°; SAIL 15°, 18°, 30°



Tower height: SPLASH 12ft, SAIL: 20ft
Elevation: SPLASH 6°; SAIL 15°, 18°, 30°

