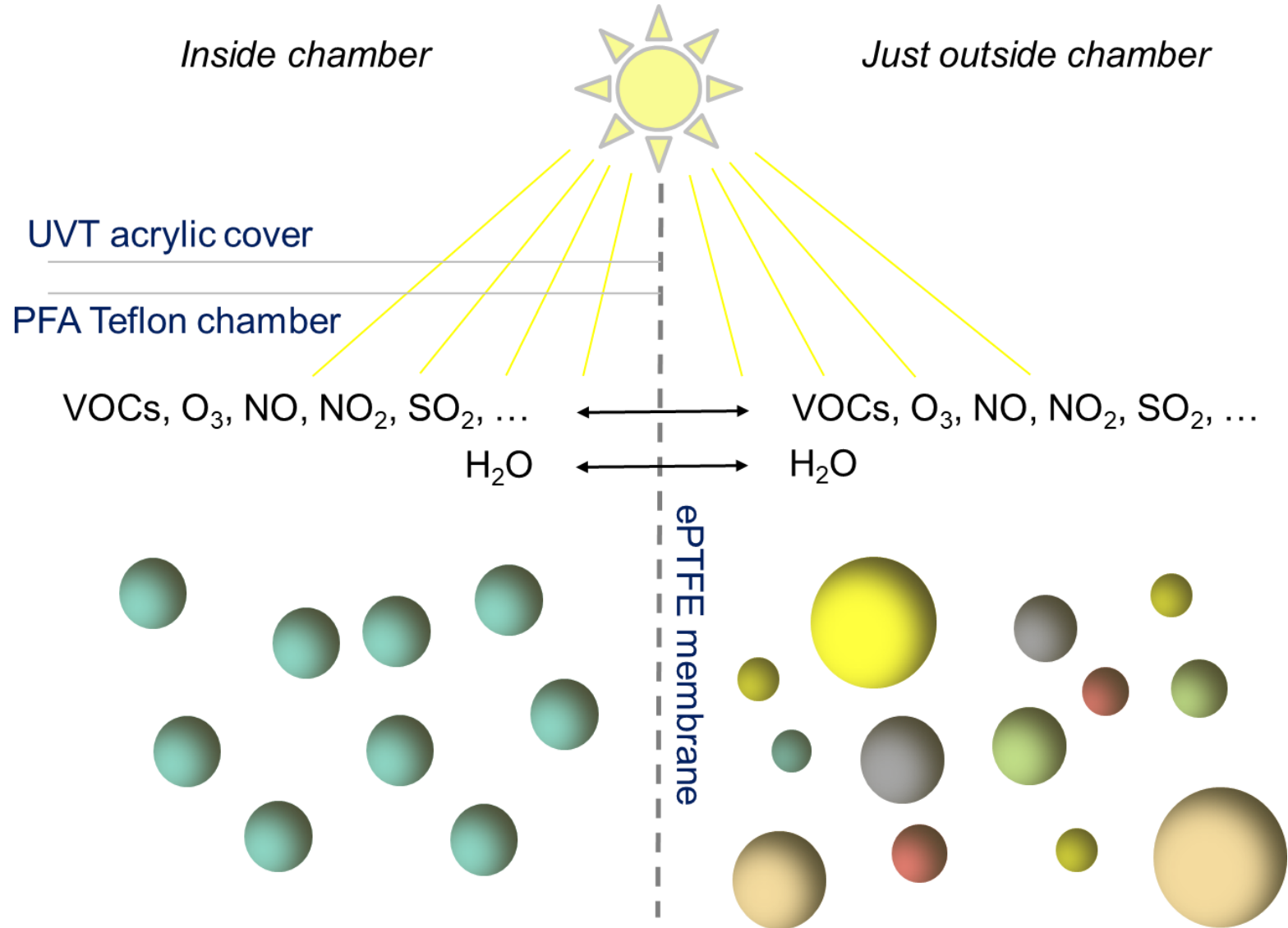


# Studying new particle formation and growth in portable captive aerosol chambers

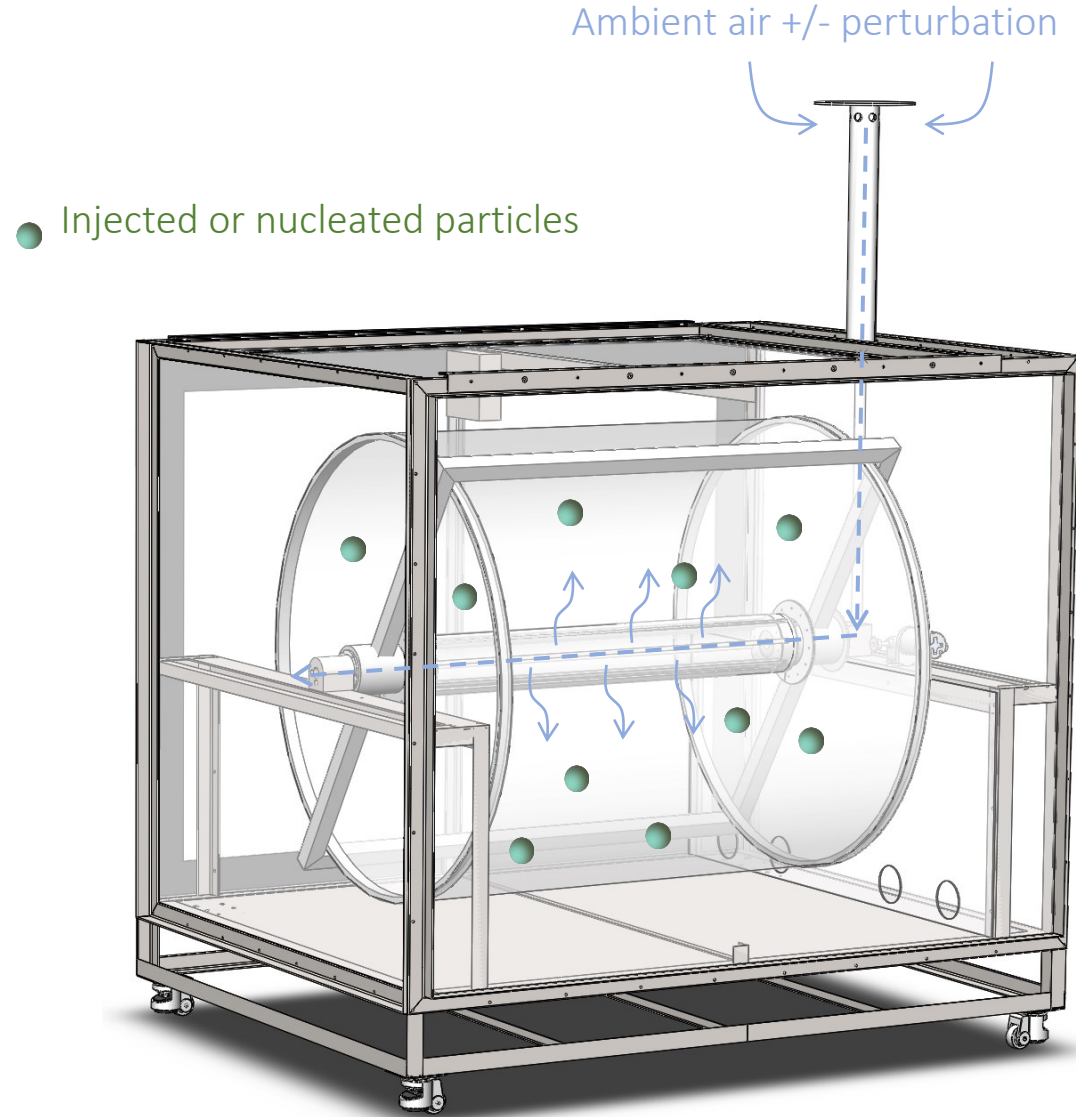
Don Collins

University of California Riverside

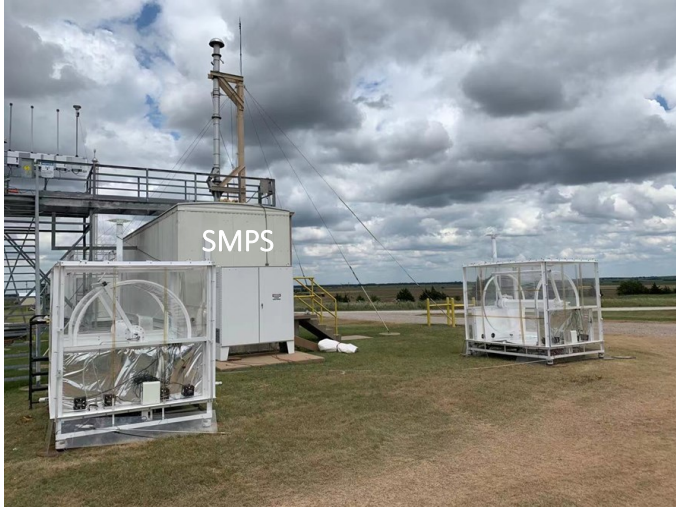
# Captive aerosol chamber concept



# Captive Aerosol Growth and Evolution (CAGE) chamber

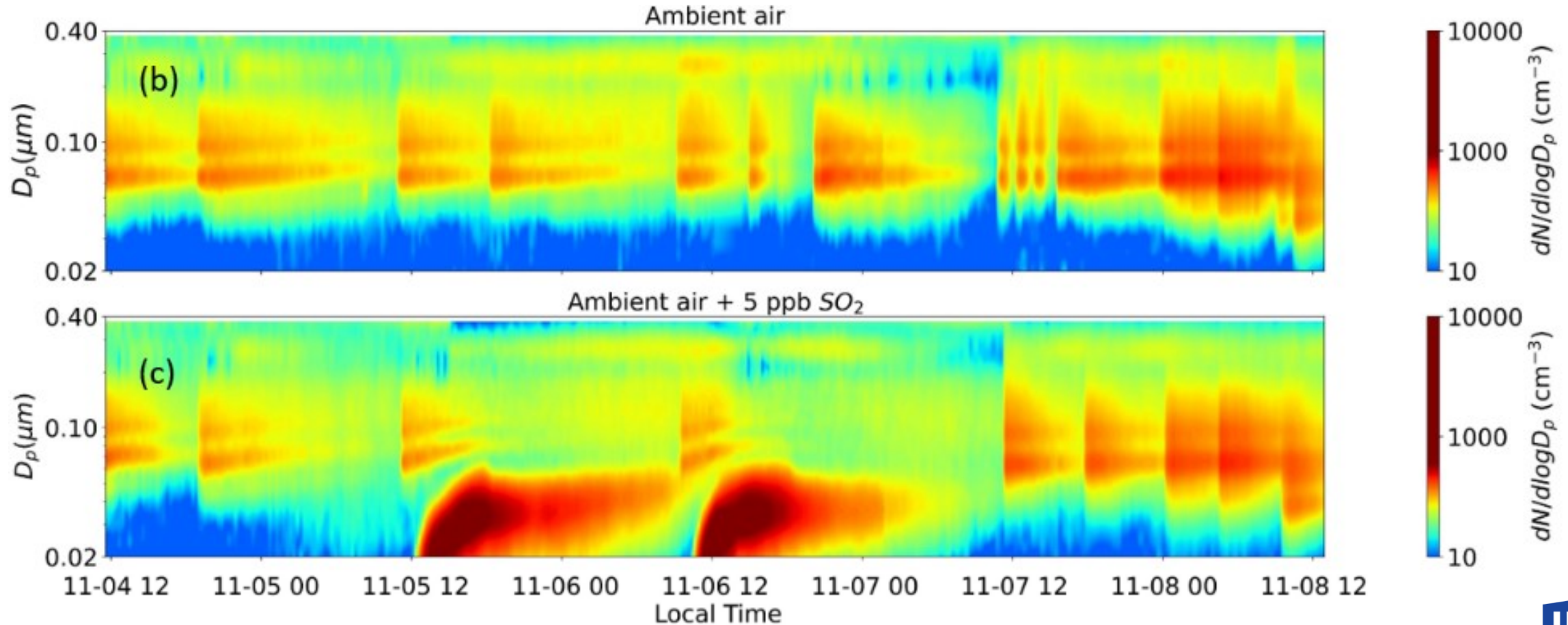


# Use of CAGE chambers for ASR/ARM projects

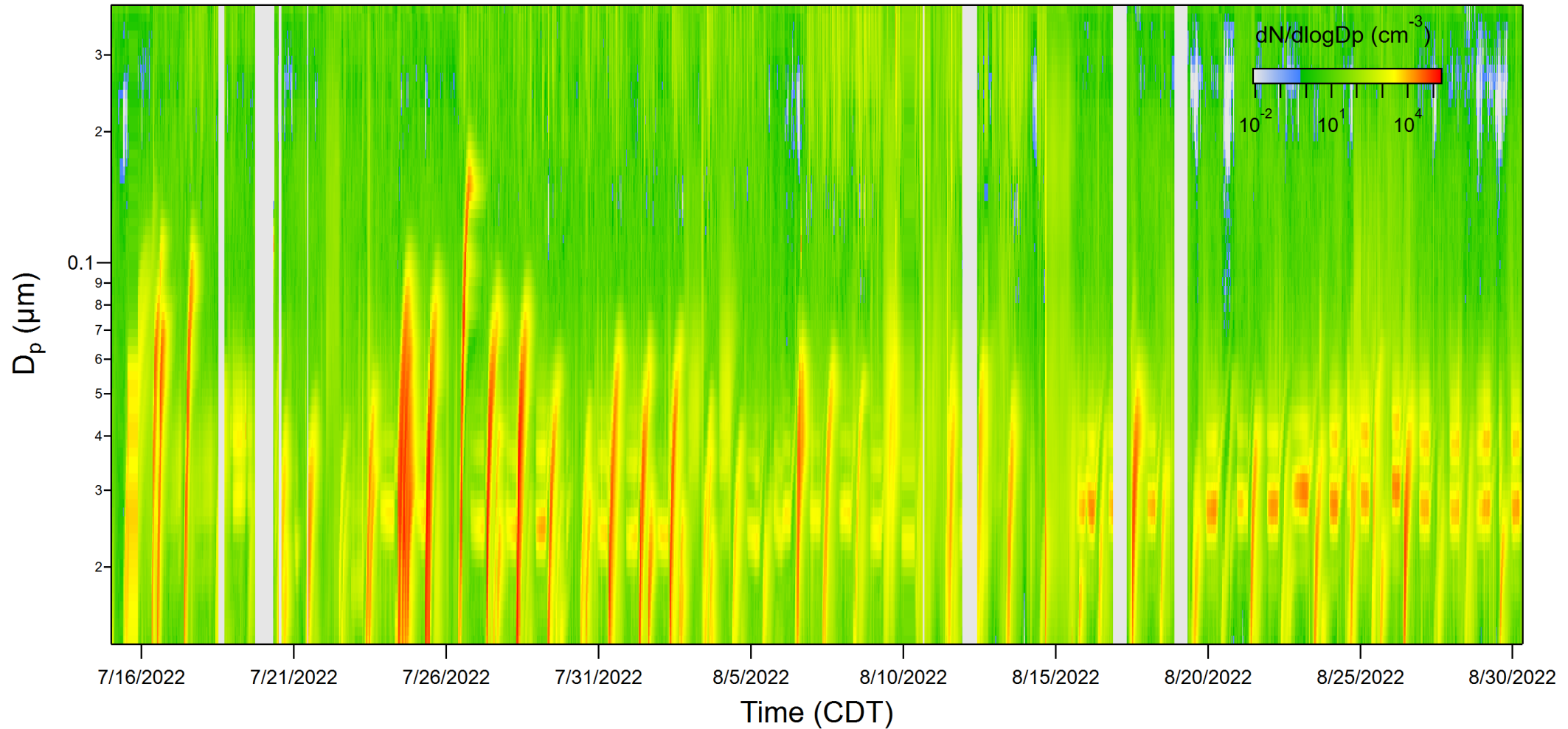




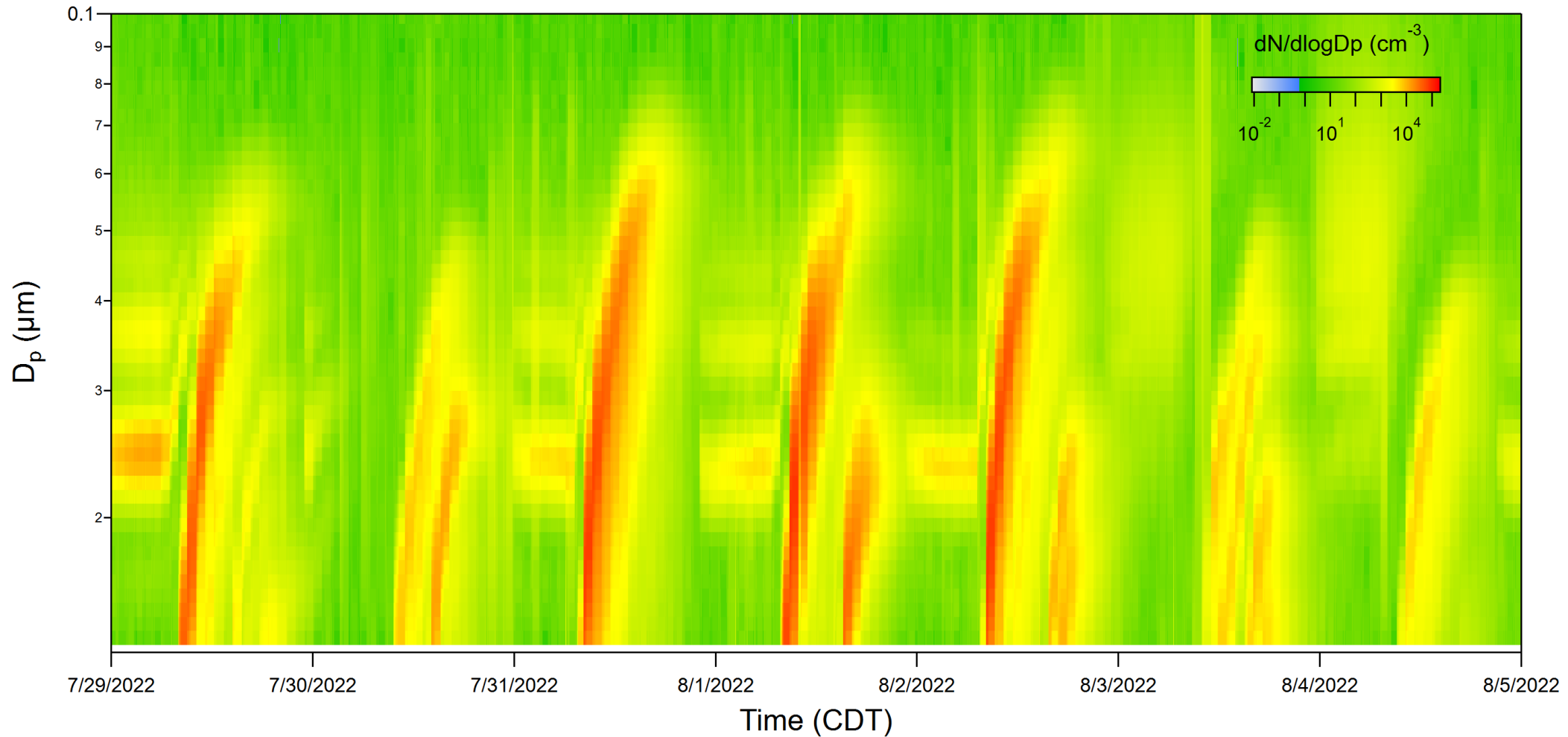
# Ambient air only vs. ambient air + SO<sub>2</sub> at SGP



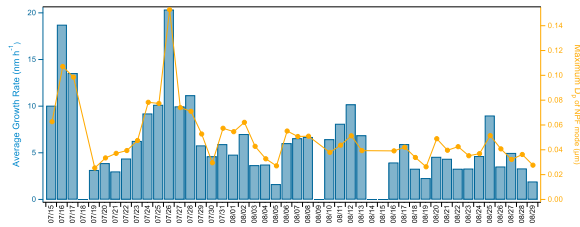
# 1.5 months of size distributions during TRACER-UFI



# Example week of size distributions during TRACER-UFI



# Daily averages of growth rate and final $D_p$ of NPF events





# Ongoing / upcoming analysis of TRACER dataset

- Continued analysis of CIMS (gas) and TDCIMS (aerosol) composition – Jim Smith
- Model simulation of NPF events – Jeffrey Pierce

